



Full wwPDB EM Validation Report ⓘ

Jun 16, 2025 – 06:14 PM JST

PDB ID : 7YQZ / pdb_00007yqz
EMDB ID : EMD-34040
Title : SARS-CoV-2 BA.2.75 S Trimer in complex with S309 (state3)
Authors : Wang, L.
Deposited on : 2022-08-08
Resolution : 3.84 Å(reported)

This is a Full wwPDB EM Validation Report for a publicly released PDB entry.

We welcome your comments at validation@mail.wwpdb.org

A user guide is available at

<https://www.wwpdb.org/validation/2017/EMValidationReportHelp>

with specific help available everywhere you see the ⓘ symbol.

The types of validation reports are described at

<http://www.wwpdb.org/validation/2017/FAQs#types>.

The following versions of software and data (see [references ⓘ](#)) were used in the production of this report:

EMDB validation analysis : 0.0.1.dev118
Mogul : 1.8.5 (274361), CSD as541be (2020)
MolProbity : 4-5-2 with Phenix2.0rc1
Percentile statistics : 20231227.v01 (using entries in the PDB archive December 27th 2023)
MapQ : 1.9.13
Ideal geometry (proteins) : Engh & Huber (2001)
Ideal geometry (DNA, RNA) : Parkinson et al. (1996)
Validation Pipeline (wwPDB-VP) : 2.44

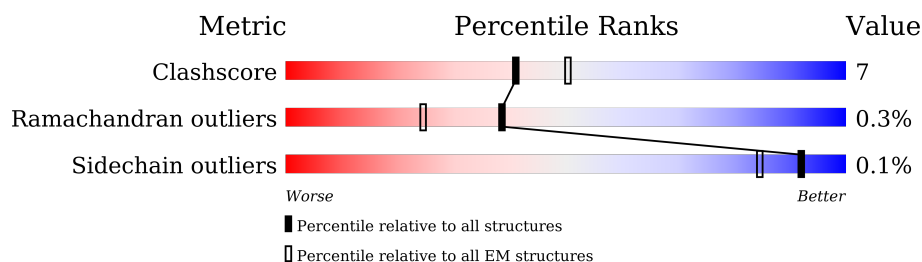
1 Overall quality at a glance

The following experimental techniques were used to determine the structure:

ELECTRON MICROSCOPY

The reported resolution of this entry is 3.84 Å.

Percentile scores (ranging between 0-100) for global validation metrics of the entry are shown in the following graphic. The table shows the number of entries on which the scores are based.




Metric	Whole archive (#Entries)	EM structures (#Entries)
Clashscore	210492	15764
Ramachandran outliers	207382	16835
Sidechain outliers	206894	16415

The table below summarises the geometric issues observed across the polymeric chains and their fit to the map. The red, orange, yellow and green segments of the bar indicate the fraction of residues that contain outliers for ≥ 3 , 2, 1 and 0 types of geometric quality criteria respectively. A grey segment represents the fraction of residues that are not modelled. The numeric value for each fraction is indicated below the corresponding segment, with a dot representing fractions $\leq 5\%$. The upper red bar (where present) indicates the fraction of residues that have poor fit to the EM map (all-atom inclusion $< 40\%$). The numeric value is given above the bar.

Mol	Chain	Length	Quality of chain
1	A	1270	 69% 11% 19%
1	B	1270	 69% 11% 20%
1	C	1270	 70% 10% 20%
2	I	126	 71% 27% .
2	J	126	 79% 19% .
3	G	214	 36% 15% 50%
3	H	214	 37% 13% 50%
4	D	4	 50% 50%

Continued on next page...

Continued from previous page...

Mol	Chain	Length	Quality of chain
4	E	4	

2 Entry composition

There are 5 unique types of molecules in this entry. The entry contains 28266 atoms, of which 0 are hydrogens and 0 are deuteriums.

In the tables below, the AltConf column contains the number of residues with at least one atom in alternate conformation and the Trace column contains the number of residues modelled with at most 2 atoms.

- Molecule 1 is a protein called Spike glycoprotein.

Mol	Chain	Residues	Atoms					AltConf	Trace
1	C	1022	Total	C	N	O	S	0	0
			7986	5106	1330	1514	36		
1	A	1025	Total	C	N	O	S	0	0
			8013	5126	1334	1517	36		
1	B	1022	Total	C	N	O	S	0	0
			7991	5111	1333	1510	37		

There are 135 discrepancies between the modelled and reference sequences:

Chain	Residue	Modelled	Actual	Comment	Reference
C	22	ILE	THR	variant	UNP P0DTC2
C	?	-	LEU	deletion	UNP P0DTC2
C	?	-	PRO	deletion	UNP P0DTC2
C	?	-	PRO	deletion	UNP P0DTC2
C	27	SER	ALA	variant	UNP P0DTC2
C	142	ASP	GLY	variant	UNP P0DTC2
C	147	GLU	LYS	variant	UNP P0DTC2
C	152	ARG	TRP	variant	UNP P0DTC2
C	157	LEU	PHE	variant	UNP P0DTC2
C	210	VAL	ILE	variant	UNP P0DTC2
C	213	GLY	VAL	variant	UNP P0DTC2
C	257	SER	GLY	variant	UNP P0DTC2
C	339	HIS	GLY	variant	UNP P0DTC2
C	371	PHE	SER	variant	UNP P0DTC2
C	373	PRO	SER	variant	UNP P0DTC2
C	375	PHE	SER	variant	UNP P0DTC2
C	376	ALA	THR	variant	UNP P0DTC2
C	405	ASN	ASP	variant	UNP P0DTC2
C	408	SER	ARG	variant	UNP P0DTC2
C	417	ASN	LYS	variant	UNP P0DTC2
C	440	LYS	ASN	variant	UNP P0DTC2
C	446	SER	GLY	variant	UNP P0DTC2
C	460	LYS	ASN	variant	UNP P0DTC2
C	477	ASN	SER	variant	UNP P0DTC2

Continued on next page...

Continued from previous page...

Chain	Residue	Modelled	Actual	Comment	Reference
C	478	LYS	THR	variant	UNP P0DTC2
C	484	ALA	GLU	variant	UNP P0DTC2
C	498	ARG	GLN	variant	UNP P0DTC2
C	501	TYR	ASN	variant	UNP P0DTC2
C	505	HIS	TYR	variant	UNP P0DTC2
C	614	GLY	ASP	variant	UNP P0DTC2
C	655	TYR	HIS	variant	UNP P0DTC2
C	679	LYS	ASN	variant	UNP P0DTC2
C	681	HIS	PRO	variant	UNP P0DTC2
C	683	ALA	ARG	engineered mutation	UNP P0DTC2
C	685	ALA	ARG	engineered mutation	UNP P0DTC2
C	764	LYS	ASN	variant	UNP P0DTC2
C	796	TYR	ASP	variant	UNP P0DTC2
C	817	PRO	PHE	engineered mutation	UNP P0DTC2
C	892	PRO	ALA	engineered mutation	UNP P0DTC2
C	899	PRO	ALA	engineered mutation	UNP P0DTC2
C	942	PRO	ALA	engineered mutation	UNP P0DTC2
C	954	HIS	GLN	variant	UNP P0DTC2
C	969	LYS	ASN	variant	UNP P0DTC2
C	986	PRO	LYS	engineered mutation	UNP P0DTC2
C	987	PRO	VAL	engineered mutation	UNP P0DTC2
A	22	ILE	THR	variant	UNP P0DTC2
A	?	-	LEU	deletion	UNP P0DTC2
A	?	-	PRO	deletion	UNP P0DTC2
A	?	-	PRO	deletion	UNP P0DTC2
A	27	SER	ALA	variant	UNP P0DTC2
A	142	ASP	GLY	variant	UNP P0DTC2
A	147	GLU	LYS	variant	UNP P0DTC2
A	152	ARG	TRP	variant	UNP P0DTC2
A	157	LEU	PHE	variant	UNP P0DTC2
A	210	VAL	ILE	variant	UNP P0DTC2
A	213	GLY	VAL	variant	UNP P0DTC2
A	257	SER	GLY	variant	UNP P0DTC2
A	339	HIS	GLY	variant	UNP P0DTC2
A	371	PHE	SER	variant	UNP P0DTC2
A	373	PRO	SER	variant	UNP P0DTC2
A	375	PHE	SER	variant	UNP P0DTC2
A	376	ALA	THR	variant	UNP P0DTC2
A	405	ASN	ASP	variant	UNP P0DTC2
A	408	SER	ARG	variant	UNP P0DTC2
A	417	ASN	LYS	variant	UNP P0DTC2
A	440	LYS	ASN	variant	UNP P0DTC2

Continued on next page...

Continued from previous page...

Chain	Residue	Modelled	Actual	Comment	Reference
A	446	SER	GLY	variant	UNP P0DTC2
A	460	LYS	ASN	variant	UNP P0DTC2
A	477	ASN	SER	variant	UNP P0DTC2
A	478	LYS	THR	variant	UNP P0DTC2
A	484	ALA	GLU	variant	UNP P0DTC2
A	498	ARG	GLN	variant	UNP P0DTC2
A	501	TYR	ASN	variant	UNP P0DTC2
A	505	HIS	TYR	variant	UNP P0DTC2
A	614	GLY	ASP	variant	UNP P0DTC2
A	655	TYR	HIS	variant	UNP P0DTC2
A	679	LYS	ASN	variant	UNP P0DTC2
A	681	HIS	PRO	variant	UNP P0DTC2
A	683	ALA	ARG	engineered mutation	UNP P0DTC2
A	685	ALA	ARG	engineered mutation	UNP P0DTC2
A	764	LYS	ASN	variant	UNP P0DTC2
A	796	TYR	ASP	variant	UNP P0DTC2
A	817	PRO	PHE	engineered mutation	UNP P0DTC2
A	892	PRO	ALA	engineered mutation	UNP P0DTC2
A	899	PRO	ALA	engineered mutation	UNP P0DTC2
A	942	PRO	ALA	engineered mutation	UNP P0DTC2
A	954	HIS	GLN	variant	UNP P0DTC2
A	969	LYS	ASN	variant	UNP P0DTC2
A	986	PRO	LYS	engineered mutation	UNP P0DTC2
A	987	PRO	VAL	engineered mutation	UNP P0DTC2
B	22	ILE	THR	variant	UNP P0DTC2
B	?	-	LEU	deletion	UNP P0DTC2
B	?	-	PRO	deletion	UNP P0DTC2
B	?	-	PRO	deletion	UNP P0DTC2
B	27	SER	ALA	variant	UNP P0DTC2
B	142	ASP	GLY	variant	UNP P0DTC2
B	147	GLU	LYS	variant	UNP P0DTC2
B	152	ARG	TRP	variant	UNP P0DTC2
B	157	LEU	PHE	variant	UNP P0DTC2
B	210	VAL	ILE	variant	UNP P0DTC2
B	213	GLY	VAL	variant	UNP P0DTC2
B	257	SER	GLY	variant	UNP P0DTC2
B	339	HIS	GLY	variant	UNP P0DTC2
B	371	PHE	SER	variant	UNP P0DTC2
B	373	PRO	SER	variant	UNP P0DTC2
B	375	PHE	SER	variant	UNP P0DTC2
B	376	ALA	THR	variant	UNP P0DTC2
B	405	ASN	ASP	variant	UNP P0DTC2

Continued on next page...

Continued from previous page...

Chain	Residue	Modelled	Actual	Comment	Reference
B	408	SER	ARG	variant	UNP P0DTC2
B	417	ASN	LYS	variant	UNP P0DTC2
B	440	LYS	ASN	variant	UNP P0DTC2
B	446	SER	GLY	variant	UNP P0DTC2
B	460	LYS	ASN	variant	UNP P0DTC2
B	477	ASN	SER	variant	UNP P0DTC2
B	478	LYS	THR	variant	UNP P0DTC2
B	484	ALA	GLU	variant	UNP P0DTC2
B	498	ARG	GLN	variant	UNP P0DTC2
B	501	TYR	ASN	variant	UNP P0DTC2
B	505	HIS	TYR	variant	UNP P0DTC2
B	614	GLY	ASP	variant	UNP P0DTC2
B	655	TYR	HIS	variant	UNP P0DTC2
B	679	LYS	ASN	variant	UNP P0DTC2
B	681	HIS	PRO	variant	UNP P0DTC2
B	683	ALA	ARG	engineered mutation	UNP P0DTC2
B	685	ALA	ARG	engineered mutation	UNP P0DTC2
B	764	LYS	ASN	variant	UNP P0DTC2
B	796	TYR	ASP	variant	UNP P0DTC2
B	817	PRO	PHE	engineered mutation	UNP P0DTC2
B	892	PRO	ALA	engineered mutation	UNP P0DTC2
B	899	PRO	ALA	engineered mutation	UNP P0DTC2
B	942	PRO	ALA	engineered mutation	UNP P0DTC2
B	954	HIS	GLN	variant	UNP P0DTC2
B	969	LYS	ASN	variant	UNP P0DTC2
B	986	PRO	LYS	engineered mutation	UNP P0DTC2
B	987	PRO	VAL	engineered mutation	UNP P0DTC2

- Molecule 2 is a protein called S309 heavy chain.

Mol	Chain	Residues	Atoms					AltConf	Trace
2	I	123	Total	C	N	O	S	0	0
			959	604	166	184	5		
2	J	123	Total	C	N	O	S	0	0
			959	604	166	184	5		

- Molecule 3 is a protein called S309 light chain.

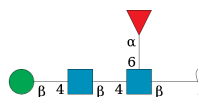
Mol	Chain	Residues	Atoms					AltConf	Trace
3	G	108	Total	C	N	O	S	0	0
			815	507	142	164	2		

Continued on next page...

Continued from previous page...

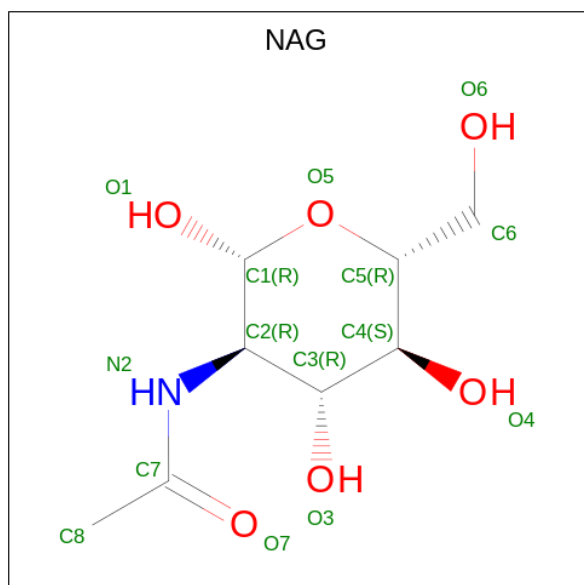
Mol	Chain	Residues	Atoms					AltConf	Trace
3	H	108	Total	C	N	O	S	0	0
			815	507	142	164	2		

- Molecule 4 is an oligosaccharide called beta-D-mannopyranose-(1-4)-2-acetamido-2-deoxy-beta-D-glucopyranose-(1-4)-[alpha-L-fucopyranose-(1-6)]2-acetamido-2-deoxy-beta-D-glucopyranose.



Mol	Chain	Residues	Atoms					AltConf	Trace
4	D	4	Total	C	N	O		0	0
			49	28	2	19			
4	E	4	Total	C	N	O		0	0
			49	28	2	19			

- Molecule 5 is 2-acetamido-2-deoxy-beta-D-glucopyranose (CCD ID: NAG) (formula: C₈H₁₅NO₆).



Mol	Chain	Residues	Atoms					AltConf
5	C	1	Total	C	N	O		0
			14	8	1	5		
5	C	1	Total	C	N	O		0
			14	8	1	5		

Continued on next page...

Continued from previous page...

Mol	Chain	Residues	Atoms				AltConf
5	C	1	Total 14	C 8	N 1	O 5	0
5	C	1	Total 14	C 8	N 1	O 5	0
5	C	1	Total 14	C 8	N 1	O 5	0
5	C	1	Total 14	C 8	N 1	O 5	0
5	C	1	Total 14	C 8	N 1	O 5	0
5	C	1	Total 14	C 8	N 1	O 5	0
5	C	1	Total 14	C 8	N 1	O 5	0
5	C	1	Total 14	C 8	N 1	O 5	0
5	C	1	Total 14	C 8	N 1	O 5	0
5	C	1	Total 14	C 8	N 1	O 5	0
5	C	1	Total 14	C 8	N 1	O 5	0
5	C	1	Total 14	C 8	N 1	O 5	0
5	C	1	Total 14	C 8	N 1	O 5	0
5	C	1	Total 14	C 8	N 1	O 5	0
5	A	1	Total 14	C 8	N 1	O 5	0
5	A	1	Total 14	C 8	N 1	O 5	0
5	A	1	Total 14	C 8	N 1	O 5	0
5	A	1	Total 14	C 8	N 1	O 5	0
5	A	1	Total 14	C 8	N 1	O 5	0
5	A	1	Total 14	C 8	N 1	O 5	0
5	A	1	Total 14	C 8	N 1	O 5	0
5	A	1	Total 14	C 8	N 1	O 5	0

Continued on next page...

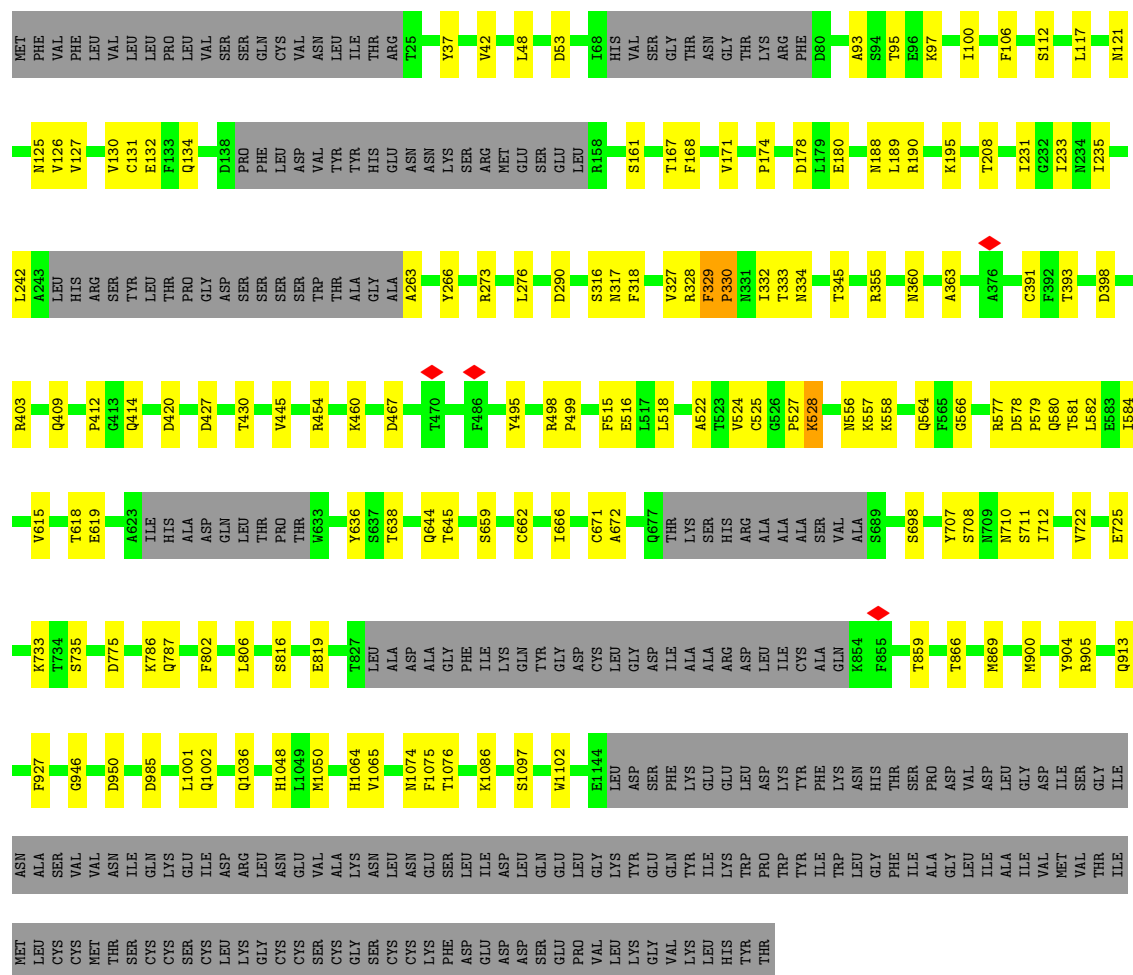
Continued from previous page...

Mol	Chain	Residues	Atoms				AltConf
5	A	1	Total	C	N	O	0
			14	8	1	5	
5	A	1	Total	C	N	O	0
			14	8	1	5	
5	A	1	Total	C	N	O	0
			14	8	1	5	
5	A	1	Total	C	N	O	0
			14	8	1	5	
5	A	1	Total	C	N	O	0
			14	8	1	5	
5	A	1	Total	C	N	O	0
			14	8	1	5	
5	B	1	Total	C	N	O	0
			14	8	1	5	
5	B	1	Total	C	N	O	0
			14	8	1	5	
5	B	1	Total	C	N	O	0
			14	8	1	5	
5	B	1	Total	C	N	O	0
			14	8	1	5	
5	B	1	Total	C	N	O	0
			14	8	1	5	
5	B	1	Total	C	N	O	0
			14	8	1	5	
5	B	1	Total	C	N	O	0
			14	8	1	5	
5	B	1	Total	C	N	O	0
			14	8	1	5	
5	B	1	Total	C	N	O	0
			14	8	1	5	
5	B	1	Total	C	N	O	0
			14	8	1	5	
5	B	1	Total	C	N	O	0
			14	8	1	5	

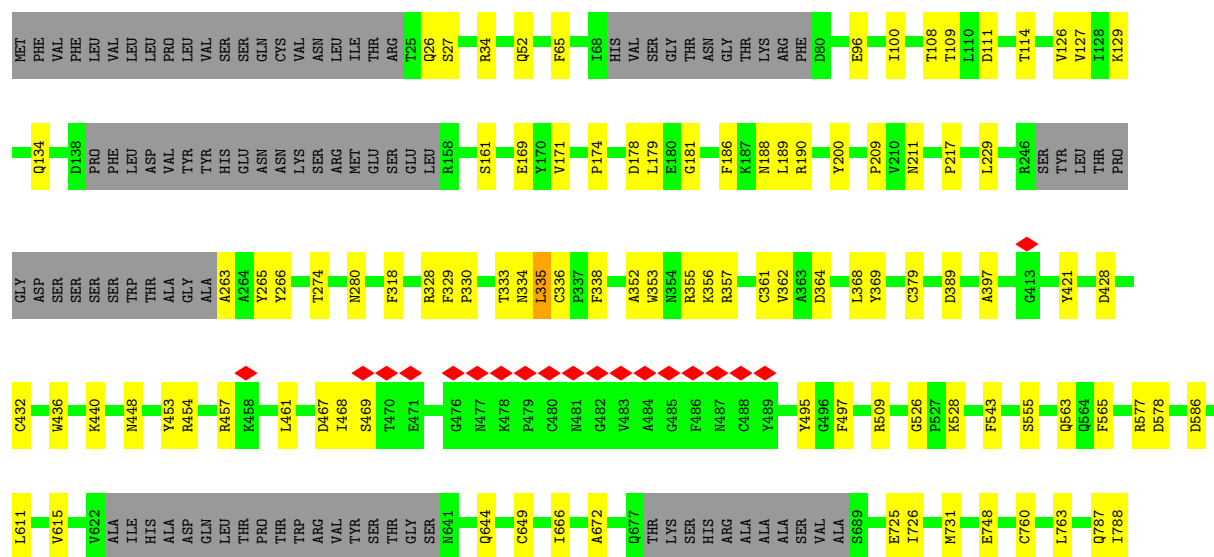
Continued on next page...

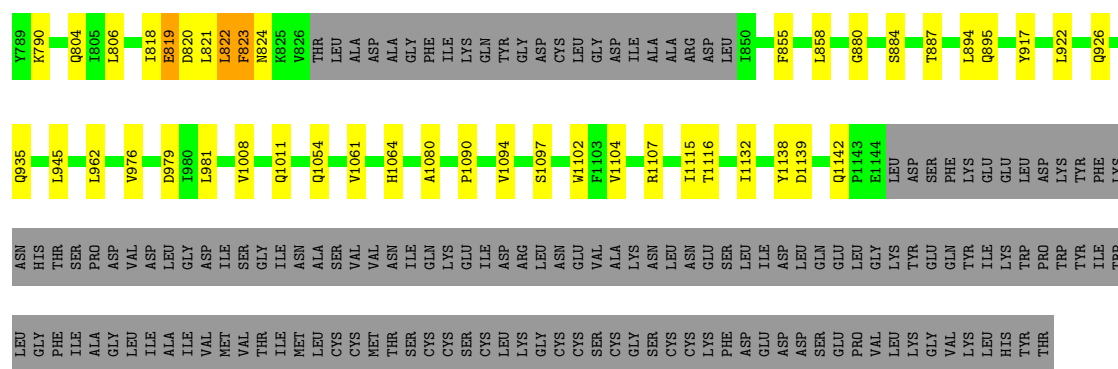
Continued from previous page...

Mol	Chain	Residues	Atoms				AltConf
			Total	C	N	O	
5	B	1	14	8	1	5	0



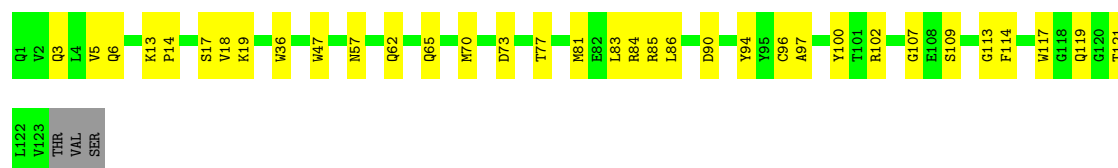
• Molecule 1: Spike glycoprotein





- Molecule 2: S309 heavy chain

Chain I:



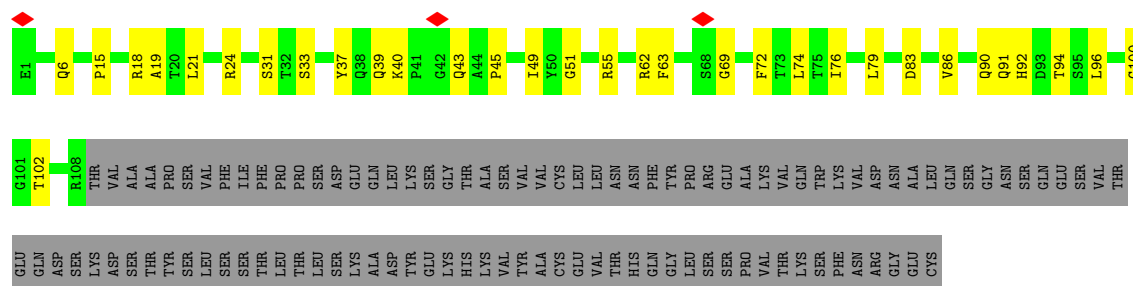
- Molecule 2: S309 heavy chain

Chain J:



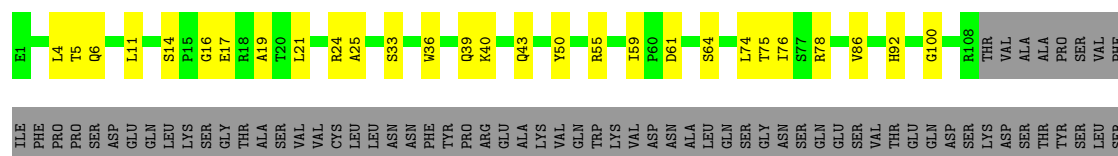
- Molecule 3: S309 light chain

Chain G:



- Molecule 3: S309 light chain

Chain H:



SER	THR	LEU	THR	LEU	SER	LYS	ALA	ASP	TYR	GLU	LYS	HIS	LYS	VAL	TYR	ALA	CYS	GLU	VAL	THR	HIS	GLN	GLY	LEU	SER	SER	PRO	VAL	THR	LYS	SER	PHE	ASN	ARG	GLY	GLU	CYS
-----	-----	-----	-----	-----	-----	-----	-----	-----	-----	-----	-----	-----	-----	-----	-----	-----	-----	-----	-----	-----	-----	-----	-----	-----	-----	-----	-----	-----	-----	-----	-----	-----	-----	-----	-----	-----	-----

- Molecule 4: beta-D-mannopyranose-(1-4)-2-acetamido-2-deoxy-beta-D-glucopyranose-(1-4)-[alpha-L-fucopyranose-(1-6)]2-acetamido-2-deoxy-beta-D-glucopyranose



MAG1	MAG2	BM3	FUC4
------	------	-----	------

- Molecule 4: beta-D-mannopyranose-(1-4)-2-acetamido-2-deoxy-beta-D-glucopyranose-(1-4)-[alpha-L-fucopyranose-(1-6)]2-acetamido-2-deoxy-beta-D-glucopyranose



MAG1	MAG2	BM3	FUC4
------	------	-----	------

4 Experimental information

Property	Value	Source
EM reconstruction method	SINGLE PARTICLE	Depositor
Imposed symmetry	POINT, Not provided	
Number of particles used	232940	Depositor
Resolution determination method	FSC 0.143 CUT-OFF	Depositor
CTF correction method	NONE	Depositor
Microscope	FEI TITAN KRIOS	Depositor
Voltage (kV)	300	Depositor
Electron dose ($e^-/\text{\AA}^2$)	60	Depositor
Minimum defocus (nm)	1200	Depositor
Maximum defocus (nm)	1800	Depositor
Magnification	Not provided	
Image detector	GATAN K3 (6k x 4k)	Depositor
Maximum map value	2.206	Depositor
Minimum map value	-1.098	Depositor
Average map value	-0.001	Depositor
Map value standard deviation	0.051	Depositor
Recommended contour level	0.166	Depositor
Map size (\AA)	385.2, 385.2, 385.2	wwPDB
Map dimensions	360, 360, 360	wwPDB
Map angles ($^\circ$)	90.0, 90.0, 90.0	wwPDB
Pixel spacing (\AA)	1.07, 1.07, 1.07	Depositor

5 Model quality

5.1 Standard geometry

Bond lengths and bond angles in the following residue types are not validated in this section: NAG, FUC, BMA

The Z score for a bond length (or angle) is the number of standard deviations the observed value is removed from the expected value. A bond length (or angle) with $|Z| > 5$ is considered an outlier worth inspection. RMSZ is the root-mean-square of all Z scores of the bond lengths (or angles).

Mol	Chain	Bond lengths		Bond angles	
		RMSZ	# Z >5	RMSZ	# Z >5
1	A	0.17	0/8203	0.41	2/11167 (0.0%)
1	B	0.17	0/8179	0.42	1/11132 (0.0%)
1	C	0.22	2/8174 (0.0%)	0.45	4/11126 (0.0%)
2	I	0.17	0/983	0.45	1/1333 (0.1%)
2	J	0.17	0/983	0.45	0/1333
3	G	0.19	0/831	0.53	0/1127
3	H	0.20	0/831	0.56	0/1127
All	All	0.19	2/28184 (0.0%)	0.44	8/38345 (0.0%)

All (2) bond length outliers are listed below:

Mol	Chain	Res	Type	Atoms	Z	Observed(Å)	Ideal(Å)
1	C	1079	PRO	CG-CD	-12.00	1.09	1.50
1	C	1079	PRO	N-CD	5.20	1.55	1.47

All (8) bond angle outliers are listed below:

Mol	Chain	Res	Type	Atoms	Z	Observed(°)	Ideal(°)
1	C	1079	PRO	N-CD-CG	-14.14	82.00	103.20
1	C	1079	PRO	CA-N-CD	-10.97	96.64	112.00
1	C	1079	PRO	CA-CB-CG	-7.87	89.56	104.50
1	B	819	GLU	N-CA-C	-7.61	104.14	113.50
2	I	85	ARG	CA-CB-CG	5.41	124.93	114.10
1	A	524	VAL	CA-C-N	-5.31	113.52	123.03
1	A	524	VAL	C-N-CA	-5.31	113.52	123.03
1	C	333	THR	CB-CA-C	-5.14	100.19	110.42

There are no chirality outliers.

There are no planarity outliers.

5.2 Too-close contacts ⓘ

In the following table, the Non-H and H(model) columns list the number of non-hydrogen atoms and hydrogen atoms in the chain respectively. The H(added) column lists the number of hydrogen atoms added and optimized by MolProbity. The Clashes column lists the number of clashes within the asymmetric unit, whereas Symm-Clashes lists symmetry-related clashes.

Mol	Chain	Non-H	H(model)	H(added)	Clashes	Symm-Clashes
1	A	8013	0	7805	118	0
1	B	7991	0	7793	108	0
1	C	7986	0	7776	93	0
2	I	959	0	913	20	0
2	J	959	0	913	17	0
3	G	815	0	801	20	0
3	H	815	0	801	16	0
4	D	49	0	43	2	0
4	E	49	0	43	0	0
5	A	210	0	195	0	0
5	B	210	0	195	1	0
5	C	210	0	195	1	0
All	All	28266	0	27473	372	0

The all-atom clashscore is defined as the number of clashes found per 1000 atoms (including hydrogen atoms). The all-atom clashscore for this structure is 7.

All (372) close contacts within the same asymmetric unit are listed below, sorted by their clash magnitude.

Atom-1	Atom-2	Interatomic distance (Å)	Clash overlap (Å)
1:A:100:ILE:CG2	1:A:242:LEU:HD21	1.49	1.43
1:A:97:LYS:HE2	1:A:180:GLU:CD	1.50	1.35
1:A:100:ILE:CG2	1:A:242:LEU:CD2	2.07	1.31
1:A:97:LYS:HE2	1:A:180:GLU:OE2	1.31	1.29
1:A:100:ILE:HG22	1:A:242:LEU:CG	1.64	1.25
1:A:97:LYS:CE	1:A:180:GLU:CD	2.27	1.07
1:A:100:ILE:HG21	1:A:242:LEU:HD21	1.18	1.07
1:A:100:ILE:HG22	1:A:242:LEU:HG	1.09	1.05
1:B:96:GLU:OE2	1:B:100:ILE:CG1	1.93	1.04
1:B:821:LEU:HD11	1:B:935:GLN:HG3	1.42	1.00
1:A:97:LYS:CE	1:A:180:GLU:OE2	2.09	0.98
1:A:100:ILE:HG23	1:A:242:LEU:CD2	1.93	0.97
1:A:100:ILE:CG2	1:A:242:LEU:CG	2.39	0.94
1:A:97:LYS:HE2	1:A:180:GLU:OE1	1.67	0.94
1:B:804:GLN:HE21	1:B:818:ILE:HD11	1.32	0.92

Continued on next page...

Continued from previous page...

Atom-1	Atom-2	Interatomic distance (Å)	Clash overlap (Å)
1:C:329:PHE:HB3	1:C:330:PRO:CD	2.00	0.92
1:A:329:PHE:HB3	1:A:330:PRO:CD	2.01	0.90
1:A:327:VAL:HG11	1:A:528:LYS:HD3	1.58	0.86
1:A:100:ILE:HG23	1:A:242:LEU:HD21	1.49	0.84
1:A:329:PHE:HB3	1:A:330:PRO:HD2	1.60	0.84
1:A:391:CYS:HB2	1:A:525:CYS:HA	1.57	0.84
1:B:335:LEU:HD13	1:B:336:CYS:H	1.43	0.81
1:B:96:GLU:OE2	1:B:100:ILE:HG13	1.39	0.76
1:B:200:TYR:HA	1:B:229:LEU:O	1.86	0.76
1:A:97:LYS:CE	1:A:180:GLU:OE1	2.30	0.75
1:A:100:ILE:CG2	1:A:242:LEU:HG	2.03	0.75
1:C:329:PHE:HB3	1:C:330:PRO:HD2	1.69	0.72
2:J:84:ARG:HG2	2:J:85:ARG:H	1.55	0.71
1:C:333:THR:HG23	1:C:334:ASN:H	1.56	0.71
3:H:21:LEU:HB2	3:H:74:LEU:HB2	1.73	0.70
1:C:200:TYR:HA	1:C:229:LEU:O	1.91	0.70
1:B:804:GLN:NE2	1:B:818:ILE:HD11	2.06	0.70
3:G:21:LEU:HB2	3:G:74:LEU:HB2	1.74	0.68
2:I:19:LYS:HA	2:I:81:MET:O	1.94	0.68
2:I:17:SER:OG	2:I:84:ARG:HG2	1.95	0.67
1:B:263:ALA:N	1:B:266:TYR:HH	1.93	0.67
1:C:659:SER:HB3	1:C:698:SER:HB3	1.75	0.67
3:H:39:GLN:HB2	3:H:86:VAL:HB	1.77	0.67
1:A:97:LYS:HD2	1:A:178:ASP:HB3	1.78	0.66
1:A:97:LYS:HD3	1:A:188:ASN:HD22	1.60	0.66
1:B:335:LEU:HD11	1:B:364:ASP:HB2	1.79	0.65
1:B:335:LEU:C	1:B:361:CYS:HB2	2.21	0.65
1:C:291:CYS:HA	1:C:297:SER:HB3	1.80	0.63
1:B:334:ASN:O	1:B:362:VAL:N	2.32	0.63
1:C:644:GLN:NE2	1:C:645:THR:O	2.30	0.63
1:C:107:GLY:H	1:C:235:ILE:HG23	1.64	0.62
1:C:108:THR:HG22	1:C:109:THR:HG23	1.81	0.62
1:B:822:LEU:O	1:B:824:ASN:N	2.32	0.62
1:C:329:PHE:HB3	1:C:330:PRO:HD3	1.80	0.62
3:G:90:GLN:HE21	3:G:96:LEU:HG	1.65	0.62
1:A:330:PRO:C	1:A:580:GLN:HE21	2.08	0.61
1:B:353:TRP:HE1	1:B:355:ARG:HE	1.47	0.61
1:B:820:ASP:O	1:B:821:LEU:C	2.44	0.60
1:C:457:ARG:NH1	1:C:467:ASP:OD2	2.35	0.60
1:B:127:VAL:HG12	1:B:171:VAL:HG22	1.83	0.60
1:B:111:ASP:OD1	1:B:134:GLN:NE2	2.34	0.60

Continued on next page...

Continued from previous page...

Atom-1	Atom-2	Interatomic distance (Å)	Clash overlap (Å)
3:H:19:ALA:HB3	3:H:76:ILE:HB	1.83	0.60
1:B:725:GLU:OE1	1:B:1064:HIS:NE2	2.35	0.60
2:J:84:ARG:CG	2:J:85:ARG:H	2.15	0.60
1:C:96:GLU:CD	1:C:100:ILE:CB	2.74	0.60
1:A:330:PRO:O	1:A:580:GLN:NE2	2.36	0.59
1:A:816:SER:HB2	1:A:819:GLU:HG3	1.84	0.59
1:B:356:LYS:HB2	1:B:397:ALA:HB3	1.84	0.59
3:G:6:GLN:HG3	3:G:100:GLY:H	1.68	0.59
1:B:334:ASN:CG	1:B:361:CYS:HA	2.27	0.58
1:A:127:VAL:HG22	1:A:171:VAL:HG12	1.85	0.58
1:B:333:THR:O	1:B:334:ASN:C	2.46	0.57
1:B:421:TYR:O	1:B:457:ARG:NH1	2.37	0.57
1:A:786:LYS:HG3	1:A:787:GLN:HG2	1.87	0.57
2:J:84:ARG:HG2	2:J:85:ARG:N	2.18	0.57
1:A:802:PHE:HB3	1:A:806:LEU:HD23	1.86	0.57
1:A:100:ILE:HG23	1:A:242:LEU:HD23	1.79	0.57
1:A:117:LEU:HD12	1:A:231:ILE:HD12	1.86	0.57
1:B:108:THR:HG22	1:B:109:THR:HG23	1.85	0.57
1:A:1048:HIS:NE2	1:A:1050:MET:O	2.37	0.57
3:G:40:LYS:HB2	3:G:43:GLN:HB3	1.87	0.57
1:A:167:THR:HB	1:B:357:ARG:HH12	1.71	0.56
1:C:802:PHE:HB3	1:C:806:LEU:HD23	1.86	0.56
3:H:11:LEU:HD11	3:H:21:LEU:HD11	1.87	0.56
3:G:24:ARG:NH2	3:G:72:PHE:O	2.36	0.56
1:C:122:ASN:HD22	1:C:125:ASN:HB2	1.70	0.56
1:A:48:LEU:HD23	1:A:276:LEU:HD21	1.88	0.56
1:B:880:GLY:O	1:B:884:SER:OG	2.23	0.56
1:C:1106:GLN:NE2	1:C:1111:GLU:OE1	2.39	0.56
1:C:131:CYS:SG	1:C:132:GLU:N	2.78	0.55
1:C:329:PHE:CE2	1:C:528:LYS:HB2	2.42	0.55
1:B:126:VAL:HG13	1:B:174:PRO:HA	1.88	0.55
1:A:97:LYS:HD2	1:A:178:ASP:CB	2.36	0.55
1:A:985:ASP:OD1	1:A:985:ASP:N	2.39	0.55
1:B:821:LEU:HD21	1:B:935:GLN:HE21	1.70	0.55
1:B:822:LEU:C	1:B:824:ASN:H	2.15	0.55
1:C:1129:VAL:HG23	1:B:917:TYR:HB3	1.88	0.55
1:A:316:SER:OG	1:A:317:ASN:N	2.39	0.55
2:I:17:SER:HA	2:I:83:LEU:O	2.07	0.55
1:C:93:ALA:HB3	1:C:266:TYR:HB2	1.90	0.54
1:C:951:VAL:O	1:C:955:ASN:ND2	2.40	0.54
1:B:1094:VAL:HG23	1:B:1107:ARG:HG2	1.88	0.54

Continued on next page...

Continued from previous page...

Atom-1	Atom-2	Interatomic distance (Å)	Clash overlap (Å)
2:J:19:LYS:HE2	2:J:80:TYR:HB3	1.90	0.54
1:A:97:LYS:HE3	1:A:180:GLU:CD	2.28	0.54
1:B:611:LEU:HD11	1:B:666:ILE:HG23	1.88	0.54
1:A:131:CYS:SG	1:A:132:GLU:N	2.72	0.54
1:A:180:GLU:OE1	1:A:188:ASN:ND2	2.39	0.54
1:B:804:GLN:NE2	1:B:935:GLN:OE1	2.40	0.54
1:A:97:LYS:HD3	1:A:188:ASN:ND2	2.23	0.54
1:B:134:GLN:HB3	1:B:161:SER:HB3	1.88	0.54
1:B:726:ILE:HG12	1:B:1061:VAL:HG22	1.90	0.54
1:C:293:LEU:HD12	1:C:294:ASP:HB2	1.89	0.54
1:A:577:ARG:HD3	1:A:582:LEU:HD13	1.90	0.54
1:C:333:THR:HG23	1:C:334:ASN:N	2.21	0.53
1:B:644:GLN:HA	1:B:649:CYS:HA	1.90	0.53
1:B:335:LEU:O	1:B:361:CYS:HB2	2.08	0.53
1:A:722:VAL:HG22	1:A:1065:VAL:HG22	1.91	0.53
1:C:487:ASN:ND2	1:B:369:TYR:O	2.41	0.53
1:A:409:GLN:HA	1:A:414:GLN:HG2	1.91	0.53
1:B:818:ILE:O	1:B:822:LEU:HD23	2.08	0.53
1:C:546:LEU:HD11	1:C:573:THR:HG21	1.89	0.53
2:J:69:THR:OG1	2:J:82:GLU:OE2	2.27	0.53
1:A:391:CYS:HB2	1:A:525:CYS:CA	2.36	0.53
1:C:454:ARG:NH2	1:C:467:ASP:O	2.42	0.52
1:C:712:ILE:HD11	1:C:1096:VAL:HG12	1.91	0.52
3:G:18:ARG:HA	3:G:76:ILE:O	2.10	0.52
3:H:64:SER:HB3	3:H:75:THR:O	2.09	0.52
1:B:457:ARG:NH2	1:B:467:ASP:OD2	2.43	0.52
1:A:126:VAL:HG13	1:A:174:PRO:HA	1.91	0.52
3:G:31:SER:HB2	3:G:69:GLY:HA2	1.92	0.52
4:D:1:NAG:H61	4:D:2:NAG:H82	1.90	0.52
1:A:273:ARG:NH2	1:A:290:ASP:OD2	2.42	0.52
3:G:33:SER:HB2	3:G:92:HIS:HB3	1.92	0.52
2:I:73:ASP:O	2:I:77:THR:N	2.42	0.51
1:B:280:ASN:HD21	5:B:1305:NAG:H82	1.75	0.51
1:B:526:GLY:O	1:B:528:LYS:NZ	2.44	0.51
2:J:55:ASN:ND2	2:J:57:ASN:OD1	2.43	0.51
1:C:196:ASN:HD22	1:C:235:ILE:HD12	1.75	0.51
1:C:359:SER:OG	1:C:360:ASN:N	2.44	0.51
1:C:1002:GLN:NE2	1:A:1002:GLN:OE1	2.44	0.51
1:A:330:PRO:HG2	1:A:332:ILE:HG22	1.93	0.51
1:C:958:ALA:HB2	1:C:1014:ARG:HH12	1.76	0.51
1:C:189:LEU:HB2	1:C:211:ASN:HD21	1.76	0.50

Continued on next page...

Continued from previous page...

Atom-1	Atom-2	Interatomic distance (Å)	Clash overlap (Å)
1:C:109:THR:H	1:C:237:ARG:HD3	1.76	0.50
1:B:178:ASP:OD1	1:B:178:ASP:N	2.44	0.50
1:B:748:GLU:HG3	1:B:981:LEU:HD11	1.93	0.50
2:I:6:GLN:HB2	2:I:119:GLN:HG2	1.92	0.50
3:G:62:ARG:NH2	3:G:83:ASP:OD2	2.42	0.50
1:C:332:ILE:HG22	1:C:333:THR:H	1.76	0.50
1:C:819:GLU:OE2	1:C:1055:SER:OG	2.30	0.50
1:B:822:LEU:C	1:B:824:ASN:N	2.70	0.50
3:H:16:GLY:HA2	3:H:78:ARG:HH11	1.76	0.50
1:A:708:SER:HB2	1:A:711:SER:HB2	1.94	0.50
1:B:129:LYS:HG3	1:B:169:GLU:HG3	1.94	0.50
1:B:666:ILE:HD11	1:B:672:ALA:HB2	1.94	0.50
1:C:457:ARG:NH2	1:C:459:SER:OG	2.45	0.50
1:B:1116:THR:HG22	1:B:1138:TYR:HB3	1.94	0.50
3:H:5:THR:N	3:H:24:ARG:O	2.43	0.50
1:A:329:PHE:HE2	1:A:528:LYS:CD	2.26	0.49
1:A:329:PHE:O	1:A:579:PRO:HG2	2.12	0.49
1:C:110:LEU:HD23	1:C:237:ARG:HE	1.77	0.49
1:B:818:ILE:O	1:B:818:ILE:HG22	2.11	0.49
1:B:819:GLU:O	1:B:823:PHE:HD1	1.95	0.49
1:C:25:THR:HG23	1:C:66:HIS:HB2	1.93	0.49
1:A:106:PHE:HD2	1:A:235:ILE:HD13	1.77	0.49
1:A:866:THR:HG22	1:A:869:MET:HE3	1.94	0.49
2:I:18:VAL:HG12	2:I:86:LEU:HD11	1.93	0.49
1:A:332:ILE:HG12	1:A:360:ASN:C	2.38	0.49
1:B:335:LEU:HD13	1:B:336:CYS:N	2.21	0.49
2:J:6:GLN:H	2:J:119:GLN:HE22	1.60	0.49
1:B:436:TRP:HE1	1:B:509:ARG:HD2	1.78	0.49
1:B:181:GLY:H	1:B:186:PHE:HD2	1.61	0.49
1:B:822:LEU:HD13	1:B:945:LEU:HD21	1.94	0.49
3:G:24:ARG:NH2	3:G:72:PHE:H	2.11	0.49
1:C:445:VAL:HA	1:C:499:PRO:HG3	1.95	0.48
1:A:329:PHE:HB3	1:A:330:PRO:HD3	1.91	0.48
1:C:126:VAL:HB	1:C:172:SER:H	1.78	0.48
1:C:589:PRO:HD2	1:B:855:PHE:HE1	1.79	0.48
1:A:93:ALA:HB3	1:A:266:TYR:HB2	1.95	0.48
1:B:421:TYR:HB3	1:B:457:ARG:HD3	1.95	0.48
1:C:112:SER:HA	1:C:132:GLU:HG2	1.94	0.48
1:C:108:THR:O	1:C:114:THR:OG1	2.31	0.48
1:A:516:GLU:HG2	1:A:518:LEU:H	1.78	0.48
1:B:179:LEU:HD11	1:B:209:PRO:HB3	1.96	0.48

Continued on next page...

Continued from previous page...

Atom-1	Atom-2	Interatomic distance (Å)	Clash overlap (Å)
1:C:712:ILE:HG23	1:C:1077:THR:HG21	1.96	0.48
1:A:134:GLN:OE1	1:A:161:SER:OG	2.31	0.48
1:B:34:ARG:NH2	1:B:217:PRO:O	2.46	0.47
2:I:70:MET:HG3	2:I:81:MET:HE1	1.95	0.47
1:C:880:GLY:O	1:C:884:SER:OG	2.29	0.47
1:A:328:ARG:NH1	1:A:580:GLN:OE1	2.47	0.47
1:B:188:ASN:O	1:B:190:ARG:NH1	2.47	0.47
1:B:763:LEU:HD22	1:B:1008:VAL:HG21	1.96	0.47
1:C:725:GLU:OE1	1:C:1064:HIS:NE2	2.39	0.47
1:B:454:ARG:NH1	1:B:469:SER:O	2.42	0.47
2:J:51:ILE:HG13	2:J:70:MET:HB3	1.96	0.47
2:J:98:ARG:NE	2:J:116:ASN:OD1	2.44	0.47
1:C:365:TYR:HD2	1:C:387:LEU:HB3	1.80	0.47
1:B:334:ASN:OD1	1:B:361:CYS:HA	2.15	0.47
1:B:389:ASP:OD1	1:B:389:ASP:N	2.48	0.47
3:G:19:ALA:HB3	3:G:76:ILE:HB	1.96	0.47
1:C:37:TYR:OH	1:C:53:ASP:OD2	2.30	0.47
1:C:380:TYR:OH	1:C:410:ILE:O	2.33	0.47
1:A:112:SER:HA	1:A:132:GLU:HG2	1.96	0.47
1:A:636:TYR:HD2	1:A:638:THR:HG22	1.79	0.47
2:J:12:LYS:NZ	2:J:17:SER:O	2.48	0.47
1:B:563:GLN:O	1:B:577:ARG:NH2	2.41	0.47
2:I:13:LYS:HD3	2:I:14:PRO:HD2	1.97	0.47
1:C:37:TYR:HB3	1:C:223:LEU:HB2	1.97	0.46
1:A:130:VAL:HB	1:A:168:PHE:HB3	1.97	0.46
1:A:662:CYS:HB2	1:A:671:CYS:HB3	1.71	0.46
1:A:905:ARG:O	1:A:1036:GLN:NE2	2.45	0.46
1:B:555:SER:HB2	1:B:586:ASP:HB2	1.97	0.46
1:C:295:PRO:HB2	1:C:608:VAL:HG21	1.98	0.46
2:I:47:TRP:HE1	3:G:96:LEU:HD13	1.80	0.46
1:B:858:LEU:HD21	1:B:962:LEU:HD23	1.98	0.46
1:C:118:LEU:O	1:C:128:ILE:HA	2.15	0.46
1:A:95:THR:OG1	1:A:263:ALA:O	2.30	0.46
1:A:189:LEU:HB3	1:A:208:THR:O	2.15	0.46
1:A:328:ARG:NH2	1:A:578:ASP:OD1	2.49	0.46
1:A:412:PRO:HB3	1:A:427:ASP:HA	1.98	0.46
3:H:33:SER:HB2	3:H:92:HIS:H	1.81	0.46
1:C:391:CYS:HB2	1:C:525:CYS:HA	1.97	0.46
1:C:822:LEU:HD22	1:C:945:LEU:HD21	1.98	0.46
1:A:231:ILE:HG12	1:A:233:ILE:HG22	1.97	0.46
1:A:318:PHE:HZ	1:A:615:VAL:HG11	1.81	0.46

Continued on next page...

Continued from previous page...

Atom-1	Atom-2	Interatomic distance (Å)	Clash overlap (Å)
1:A:725:GLU:OE1	1:A:1064:HIS:NE2	2.40	0.46
2:I:97:ALA:HB1	2:I:114:PHE:HB3	1.98	0.46
2:I:100:TYR:HB3	2:I:113:GLY:H	1.81	0.46
3:G:15:PRO:HA	3:G:79:LEU:HB3	1.98	0.46
1:C:699:LEU:HB2	1:B:788:ILE:HD11	1.98	0.45
1:C:711:SER:O	1:B:895:GLN:NE2	2.49	0.45
1:A:900:MET:HE3	1:A:900:MET:HB2	1.82	0.45
1:B:335:LEU:HD22	1:B:362:VAL:O	2.16	0.45
1:C:329:PHE:CB	1:C:330:PRO:CD	2.84	0.45
1:C:456:PHE:HE2	1:C:489:TYR:HD2	1.64	0.45
1:A:37:TYR:OH	1:A:195:LYS:NZ	2.49	0.45
3:H:61:ASP:N	3:H:61:ASP:OD1	2.49	0.45
1:C:909:ILE:HD12	1:C:1047:TYR:HB3	1.98	0.45
1:C:985:ASP:OD1	1:C:985:ASP:N	2.45	0.45
1:A:393:THR:HG22	1:A:522:ALA:HA	1.98	0.45
1:C:457:ARG:NE	1:C:459:SER:O	2.41	0.45
1:A:355:ARG:NH2	1:A:398:ASP:OD2	2.50	0.45
1:B:52:GLN:HB2	1:B:274:THR:HG22	1.97	0.45
1:B:335:LEU:HD13	1:B:362:VAL:O	2.16	0.45
1:B:887:THR:HG21	1:B:894:LEU:HB2	1.97	0.45
3:G:55:ARG:NH2	3:G:63:PHE:O	2.48	0.45
1:A:329:PHE:CB	1:A:330:PRO:CD	2.84	0.45
2:I:6:GLN:HB3	2:I:121:THR:HG23	1.97	0.45
2:J:115:ASP:OD1	2:J:115:ASP:N	2.45	0.45
1:A:420:ASP:HB2	1:A:460:LYS:HD2	1.99	0.45
1:C:462:LYS:HE3	1:C:463:PRO:HD2	1.98	0.45
1:A:564:GLN:OE1	1:A:577:ARG:NE	2.50	0.45
1:A:659:SER:HB3	1:A:698:SER:HB3	1.98	0.45
3:G:39:GLN:NE2	3:G:43:GLN:O	2.31	0.45
1:C:106:PHE:HB2	1:C:117:LEU:HD12	1.99	0.45
1:C:718:PHE:HA	1:C:1069:PRO:HA	1.99	0.45
1:A:37:TYR:OH	1:A:53:ASP:OD2	2.31	0.45
3:H:55:ARG:HB3	3:H:59:ILE:HD13	1.98	0.45
1:B:108:THR:O	1:B:114:THR:OG1	2.35	0.44
1:C:699:LEU:HD12	1:B:788:ILE:HD11	2.00	0.44
1:B:379:CYS:HA	1:B:432:CYS:HA	2.00	0.44
1:B:760:CYS:HA	1:B:763:LEU:HG	1.98	0.44
1:B:976:VAL:HG12	1:B:979:ASP:H	1.83	0.44
3:G:86:VAL:HG23	3:G:102:THR:H	1.81	0.44
3:H:6:GLN:HG3	3:H:100:GLY:H	1.82	0.44
1:A:557:LYS:HB2	1:A:584:ILE:HG21	1.99	0.44

Continued on next page...

Continued from previous page...

Atom-1	Atom-2	Interatomic distance (Å)	Clash overlap (Å)
2:I:62:GLN:C	2:I:65:GLN:HE22	2.26	0.44
1:C:119:ILE:HA	1:C:128:ILE:HG12	1.97	0.44
1:C:340:GLU:OE2	2:J:104:ALA:N	2.44	0.44
1:A:802:PHE:HE1	1:A:927:PHE:HE2	1.66	0.44
1:C:792:PRO:HG3	1:A:707:TYR:HB3	1.99	0.44
1:B:822:LEU:CD1	1:B:945:LEU:HD21	2.48	0.44
1:C:135:PHE:O	1:C:161:SER:OG	2.26	0.44
1:A:946:GLY:O	1:A:950:ASP:N	2.47	0.44
1:B:189:LEU:H	1:B:211:ASN:HD21	1.65	0.44
2:J:91:THR:HA	2:J:123:VAL:HG23	2.00	0.44
3:H:14:SER:OG	3:H:17:GLU:OE1	2.33	0.44
1:C:558:LYS:HD3	1:C:558:LYS:HA	1.79	0.44
1:A:106:PHE:HB2	1:A:117:LEU:HB3	2.00	0.44
1:A:329:PHE:O	1:A:579:PRO:CG	2.66	0.44
1:A:556:ASN:O	1:A:558:LYS:NZ	2.51	0.44
1:C:333:THR:O	1:C:334:ASN:C	2.61	0.43
1:A:180:GLU:HB3	1:A:188:ASN:HD21	1.82	0.43
1:A:1086:LYS:HE3	1:A:1086:LYS:HB2	1.83	0.43
3:G:91:GLN:NE2	3:G:94:THR:O	2.50	0.43
2:I:36:TRP:CE2	2:I:96:CYS:HB3	2.54	0.43
2:I:90:ASP:O	2:I:94:TYR:OH	2.35	0.43
1:C:318:PHE:HE2	1:C:622:VAL:HG21	1.83	0.43
1:C:887:THR:HG21	1:C:894:LEU:HD12	1.99	0.43
1:A:97:LYS:HB3	1:A:190:ARG:HH21	1.82	0.43
1:A:97:LYS:CD	1:A:180:GLU:OE1	2.66	0.43
1:A:430:THR:OG1	1:A:515:PHE:O	2.30	0.43
1:A:1001:LEU:HD23	1:A:1001:LEU:HA	1.89	0.43
1:B:96:GLU:HG3	1:B:100:ILE:HB	1.17	0.43
1:C:291:CYS:HB3	1:C:301:CYS:HB2	1.61	0.43
1:A:328:ARG:NH2	1:A:581:THR:OG1	2.52	0.43
1:A:445:VAL:HA	1:A:499:PRO:HG3	2.01	0.43
1:B:440:LYS:HA	1:B:440:LYS:HD3	1.79	0.43
3:G:49:ILE:HG22	3:G:51:GLY:H	1.84	0.43
3:H:36:TRP:CD1	3:H:74:LEU:HD11	2.53	0.43
1:A:712:ILE:HG23	1:A:1075:PHE:HB2	2.00	0.43
1:B:26:GLN:NE2	1:B:27:SER:O	2.52	0.43
1:B:731:MET:HE1	1:B:1011:GLN:HE22	1.84	0.43
1:A:125:ASN:HA	1:A:174:PRO:HD3	2.00	0.43
1:B:328:ARG:HD3	1:B:543:PHE:HE1	1.83	0.43
1:B:65:PHE:HB2	1:B:265:TYR:CD2	2.54	0.43
1:B:790:LYS:HE3	1:B:790:LYS:HB2	1.90	0.43

Continued on next page...

Continued from previous page...

Atom-1	Atom-2	Interatomic distance (Å)	Clash overlap (Å)
3:G:37:TYR:HD2	3:G:45:PRO:HB2	1.84	0.43
1:C:43:PHE:HB3	1:A:566:GLY:HA2	2.00	0.43
1:C:99:ASN:HB2	1:C:102:ARG:HH12	1.83	0.43
1:A:345:THR:OG1	2:I:109:SER:OG	2.36	0.43
1:B:1104:VAL:HG12	1:B:1115:ILE:HG12	2.00	0.43
1:A:666:ILE:HD11	1:A:672:ALA:HB2	2.01	0.43
1:A:913:GLN:HE22	1:B:1090:PRO:HD2	1.84	0.43
1:B:448:ASN:H	1:B:497:PHE:HB2	1.83	0.43
1:A:454:ARG:NH2	1:A:467:ASP:O	2.52	0.42
1:A:1097:SER:HB2	1:A:1102:TRP:CD2	2.54	0.42
1:B:804:GLN:HB3	1:B:818:ILE:HG12	2.01	0.42
2:I:57:ASN:OD1	2:I:57:ASN:N	2.52	0.42
2:I:117:TRP:CE2	3:G:45:PRO:HG2	2.53	0.42
1:A:733:LYS:NZ	1:A:775:ASP:OD2	2.52	0.42
1:A:904:TYR:HB3	1:B:1107:ARG:HH22	1.83	0.42
1:A:735:SER:O	1:A:859:THR:OG1	2.35	0.42
2:J:48:MET:HE2	2:J:48:MET:HB2	1.92	0.42
1:A:329:PHE:HE2	1:A:528:LYS:HD3	1.85	0.42
1:C:604:THR:HA	5:C:1307:NAG:H82	2.02	0.42
1:A:644:GLN:NE2	1:A:645:THR:O	2.51	0.42
3:H:40:LYS:HB2	3:H:43:GLN:HB2	2.01	0.42
1:C:41:LYS:HE3	1:C:41:LYS:HB3	1.77	0.42
1:B:65:PHE:HB2	1:B:265:TYR:HD2	1.85	0.42
1:C:365:TYR:CD2	1:C:387:LEU:HB3	2.55	0.42
1:C:553:THR:OG1	1:C:554:GLU:N	2.53	0.42
1:A:710:ASN:HB2	1:A:1076:THR:HG23	2.02	0.42
2:I:102:ARG:NH1	2:I:107:GLY:O	2.52	0.42
1:A:332:ILE:HG13	1:A:333:THR:N	2.35	0.42
2:J:13:LYS:HD3	2:J:13:LYS:HA	1.89	0.42
1:C:195:LYS:HE3	1:C:202:LYS:HD2	2.02	0.42
1:B:428:ASP:OD1	1:B:428:ASP:N	2.51	0.42
1:C:204:TYR:HB3	1:C:223:LEU:HB3	2.02	0.42
1:B:338:PHE:HD1	1:B:368:LEU:HD11	1.85	0.42
1:B:1097:SER:HB3	1:B:1102:TRP:CD2	2.55	0.42
1:C:357:ARG:HH22	1:B:200:TYR:HE1	1.66	0.41
1:C:729:VAL:HG23	1:C:1059:GLY:HA2	2.01	0.41
1:A:121:ASN:HA	1:A:126:VAL:HG12	2.02	0.41
1:C:858:LEU:HD23	1:C:959:LEU:HD22	2.01	0.41
1:A:42:VAL:HG12	1:B:565:PHE:HB2	2.01	0.41
1:C:662:CYS:HB2	1:C:671:CYS:HB3	1.66	0.41
1:A:363:ALA:O	1:A:527:PRO:HD3	2.21	0.41

Continued on next page...

Continued from previous page...

Atom-1	Atom-2	Interatomic distance (Å)	Clash overlap (Å)
1:C:703:ASN:OD1	1:B:787:GLN:NE2	2.47	0.41
1:C:704:SER:HB2	1:B:790:LYS:HD3	2.03	0.41
1:B:453:TYR:HE1	1:B:495:TYR:HA	1.85	0.41
1:C:192:PHE:HA	1:C:204:TYR:O	2.21	0.41
1:C:331:ASN:C	1:C:332:ILE:CG1	2.94	0.41
1:A:403:ARG:HD3	1:A:495:TYR:CZ	2.56	0.41
1:C:130:VAL:HB	1:C:168:PHE:HB2	2.02	0.41
1:A:100:ILE:HG22	1:A:242:LEU:CD1	2.41	0.41
1:A:618:THR:OG1	1:A:619:GLU:OE1	2.39	0.41
1:B:806:LEU:HD23	1:B:806:LEU:HA	1.89	0.41
1:B:819:GLU:OE2	1:B:1054:GLN:HB3	2.20	0.41
1:B:1139:ASP:HB3	1:B:1142:GLN:HB2	2.03	0.41
3:H:4:LEU:HA	3:H:25:ALA:HA	2.03	0.41
1:A:332:ILE:HD12	1:A:333:THR:H	1.86	0.40
1:B:329:PHE:O	1:B:330:PRO:C	2.64	0.40
1:B:457:ARG:HH12	1:B:461:LEU:HB2	1.85	0.40
1:B:1080:ALA:HB3	1:B:1132:ILE:HD12	2.02	0.40
2:J:38:ARG:HH12	2:J:90:ASP:HB2	1.87	0.40
1:C:895:GLN:NE2	1:A:1074:ASN:OD1	2.54	0.40
2:J:84:ARG:CG	2:J:85:ARG:N	2.78	0.40
1:C:560:LEU:HD23	1:C:560:LEU:HA	1.94	0.40
1:A:498:ARG:HA	1:A:498:ARG:HD3	1.98	0.40
1:B:352:ALA:HB2	1:B:468:ILE:HD12	2.03	0.40
1:B:922:LEU:O	1:B:926:GLN:N	2.53	0.40
1:C:360:ASN:N	1:C:360:ASN:OD1	2.54	0.40
1:B:318:PHE:HZ	1:B:615:VAL:HG21	1.87	0.40
1:B:328:ARG:NE	1:B:578:ASP:OD1	2.55	0.40
2:I:3:GLN:HE22	2:I:5:VAL:HB	1.86	0.40
3:H:50:TYR:CZ	4:D:1:NAG:H62	2.56	0.40

There are no symmetry-related clashes.

5.3 Torsion angles ⓘ

5.3.1 Protein backbone ⓘ

In the following table, the Percentiles column shows the percent Ramachandran outliers of the chain as a percentile score with respect to all PDB entries followed by that with respect to all EM entries.

The Analysed column shows the number of residues for which the backbone conformation was analysed, and the total number of residues.

Mol	Chain	Analysed	Favoured	Allowed	Outliers	Percentiles	
1	A	1011/1270 (80%)	943 (93%)	64 (6%)	4 (0%)	30	65
1	B	1008/1270 (79%)	942 (94%)	64 (6%)	2 (0%)	44	75
1	C	1008/1270 (79%)	943 (94%)	62 (6%)	3 (0%)	37	70
2	I	121/126 (96%)	113 (93%)	8 (7%)	0	100	100
2	J	121/126 (96%)	115 (95%)	6 (5%)	0	100	100
3	G	106/214 (50%)	85 (80%)	21 (20%)	0	100	100
3	H	106/214 (50%)	93 (88%)	13 (12%)	0	100	100
All	All	3481/4490 (78%)	3234 (93%)	238 (7%)	9 (0%)	38	70

All (9) Ramachandran outliers are listed below:

Mol	Chain	Res	Type
1	C	329	PHE
1	C	334	ASN
1	A	329	PHE
1	A	528	LYS
1	B	823	PHE
1	A	334	ASN
1	B	822	LEU
1	C	330	PRO
1	A	330	PRO

5.3.2 Protein sidechains ⓘ

In the following table, the Percentiles column shows the percent sidechain outliers of the chain as a percentile score with respect to all PDB entries followed by that with respect to all EM entries.

The Analysed column shows the number of residues for which the sidechain conformation was analysed, and the total number of residues.

Mol	Chain	Analysed	Rotameric	Outliers	Percentiles	
1	A	894/1111 (80%)	894 (100%)	0	100	100
1	B	892/1111 (80%)	891 (100%)	1 (0%)	92	95
1	C	892/1111 (80%)	891 (100%)	1 (0%)	92	95
2	I	99/102 (97%)	99 (100%)	0	100	100
2	J	99/102 (97%)	99 (100%)	0	100	100
3	G	90/185 (49%)	90 (100%)	0	100	100

Continued on next page...

Continued from previous page...

Mol	Chain	Analysed	Rotameric	Outliers	Percentiles	
3	H	90/185 (49%)	90 (100%)	0	100	100
All	All	3056/3907 (78%)	3054 (100%)	2 (0%)	92	95

All (2) residues with a non-rotameric sidechain are listed below:

Mol	Chain	Res	Type
1	C	333	THR
1	B	335	LEU

Sometimes sidechains can be flipped to improve hydrogen bonding and reduce clashes. All (39) such sidechains are listed below:

Mol	Chain	Res	Type
1	C	196	ASN
1	C	405	ASN
1	C	481	ASN
1	C	506	GLN
1	C	536	ASN
1	C	949	GLN
1	C	1011	GLN
1	C	1142	GLN
1	A	99	ASN
1	A	121	ASN
1	A	188	ASN
1	A	218	GLN
1	A	271	GLN
1	A	370	ASN
1	A	405	ASN
1	A	414	GLN
1	A	481	ASN
1	A	493	GLN
1	A	540	ASN
1	A	544	ASN
1	A	779	GLN
1	A	1054	GLN
1	B	87	ASN
1	B	115	GLN
1	B	185	ASN
1	B	343	ASN
1	B	414	GLN
1	B	481	ASN
1	B	506	GLN

Continued on next page...

Continued from previous page...

Mol	Chain	Res	Type
1	B	563	GLN
1	B	804	GLN
1	B	913	GLN
1	B	955	ASN
1	B	957	GLN
1	B	1002	GLN
1	B	1011	GLN
3	G	90	GLN
3	G	92	HIS
2	J	3	GLN

5.3.3 RNA ⓘ

There are no RNA molecules in this entry.

5.4 Non-standard residues in protein, DNA, RNA chains ⓘ

There are no non-standard protein/DNA/RNA residues in this entry.

5.5 Carbohydrates ⓘ

8 monosaccharides are modelled in this entry.

In the following table, the Counts columns list the number of bonds (or angles) for which Mogul statistics could be retrieved, the number of bonds (or angles) that are observed in the model and the number of bonds (or angles) that are defined in the Chemical Component Dictionary. The Link column lists molecule types, if any, to which the group is linked. The Z score for a bond length (or angle) is the number of standard deviations the observed value is removed from the expected value. A bond length (or angle) with $|Z| > 2$ is considered an outlier worth inspection. RMSZ is the root-mean-square of all Z scores of the bond lengths (or angles).

Mol	Type	Chain	Res	Link	Bond lengths			Bond angles		
					Counts	RMSZ	$\# Z > 2$	Counts	RMSZ	$\# Z > 2$
4	NAG	D	1	1,4	14,14,15	0.38	0	17,19,21	0.80	1 (5%)
4	NAG	D	2	4	14,14,15	0.62	0	17,19,21	1.96	2 (11%)
4	BMA	D	3	4	11,11,12	0.63	0	15,15,17	0.83	0
4	FUC	D	4	4	10,10,11	0.76	0	14,14,16	0.82	0
4	NAG	E	1	1,4	14,14,15	0.42	0	17,19,21	0.71	0
4	NAG	E	2	4	14,14,15	0.60	0	17,19,21	1.99	2 (11%)
4	BMA	E	3	4	11,11,12	0.62	0	15,15,17	0.89	1 (6%)
4	FUC	E	4	4	10,10,11	0.80	0	14,14,16	0.92	0

In the following table, the Chirals column lists the number of chiral outliers, the number of chiral centers analysed, the number of these observed in the model and the number defined in the Chemical Component Dictionary. Similar counts are reported in the Torsion and Rings columns. '-' means no outliers of that kind were identified.

Mol	Type	Chain	Res	Link	Chirals	Torsions	Rings
4	NAG	D	1	1,4	-	0/6/23/26	0/1/1/1
4	NAG	D	2	4	-	5/6/23/26	0/1/1/1
4	BMA	D	3	4	-	1/2/19/22	0/1/1/1
4	FUC	D	4	4	-	-	0/1/1/1
4	NAG	E	1	1,4	-	0/6/23/26	0/1/1/1
4	NAG	E	2	4	-	3/6/23/26	0/1/1/1
4	BMA	E	3	4	-	0/2/19/22	0/1/1/1
4	FUC	E	4	4	-	-	0/1/1/1

There are no bond length outliers.

All (6) bond angle outliers are listed below:

Mol	Chain	Res	Type	Atoms	Z	Observed(°)	Ideal(°)
4	E	2	NAG	C2-N2-C7	6.89	132.71	122.90
4	D	2	NAG	C2-N2-C7	6.87	132.69	122.90
4	E	2	NAG	C1-C2-N2	3.31	116.14	110.49
4	D	2	NAG	C1-C2-N2	3.23	116.01	110.49
4	D	1	NAG	C1-O5-C5	2.46	115.53	112.19
4	E	3	BMA	C1-O5-C5	2.14	115.09	112.19

There are no chirality outliers.

All (9) torsion outliers are listed below:

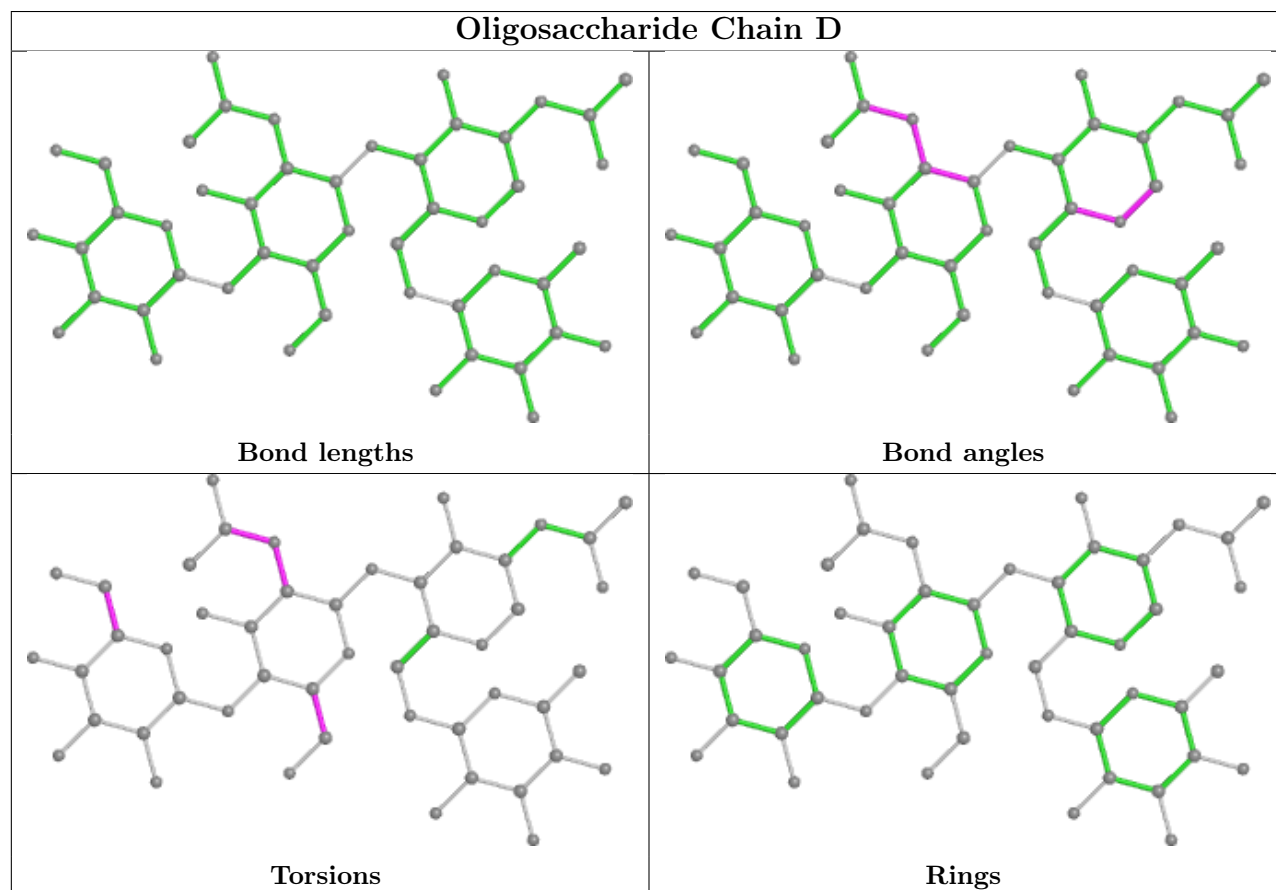
Mol	Chain	Res	Type	Atoms
4	D	2	NAG	C8-C7-N2-C2
4	D	2	NAG	O7-C7-N2-C2
4	E	2	NAG	C8-C7-N2-C2
4	E	2	NAG	O7-C7-N2-C2
4	D	3	BMA	O5-C5-C6-O6
4	D	2	NAG	C4-C5-C6-O6
4	D	2	NAG	O5-C5-C6-O6
4	D	2	NAG	C3-C2-N2-C7
4	E	2	NAG	C3-C2-N2-C7

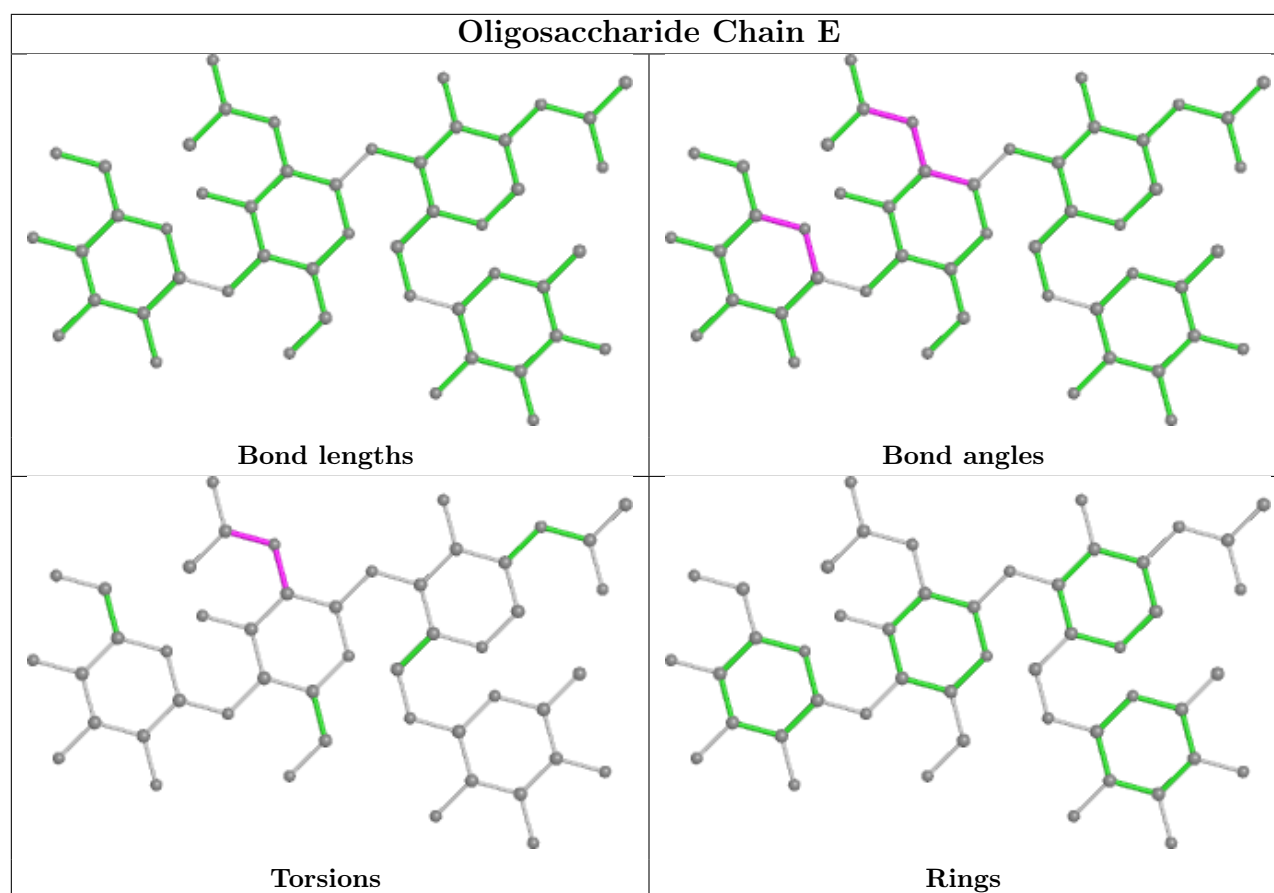
There are no ring outliers.

2 monomers are involved in 2 short contacts:

Mol	Chain	Res	Type	Clashes	Symm-Clashes
4	D	2	NAG	1	0
4	D	1	NAG	2	0

The following is a two-dimensional graphical depiction of Mogul quality analysis of bond lengths, bond angles, torsion angles, and ring geometry for oligosaccharide.





5.6 Ligand geometry [i](#)

45 ligands are modelled in this entry.

In the following table, the Counts columns list the number of bonds (or angles) for which Mogul statistics could be retrieved, the number of bonds (or angles) that are observed in the model and the number of bonds (or angles) that are defined in the Chemical Component Dictionary. The Link column lists molecule types, if any, to which the group is linked. The Z score for a bond length (or angle) is the number of standard deviations the observed value is removed from the expected value. A bond length (or angle) with $|Z| > 2$ is considered an outlier worth inspection. RMSZ is the root-mean-square of all Z scores of the bond lengths (or angles).

Mol	Type	Chain	Res	Link	Bond lengths			Bond angles		
					Counts	RMSZ	$\# Z > 2$	Counts	RMSZ	$\# Z > 2$
5	NAG	C	1301	1	14,14,15	0.29	0	17,19,21	0.48	0
5	NAG	A	1306	1	14,14,15	0.25	0	17,19,21	0.49	0
5	NAG	A	1309	1	14,14,15	0.29	0	17,19,21	0.49	0
5	NAG	A	1312	1	14,14,15	0.26	0	17,19,21	0.48	0
5	NAG	C	1310	1	14,14,15	0.27	0	17,19,21	0.50	0
5	NAG	C	1302	1	14,14,15	0.32	0	17,19,21	0.49	0
5	NAG	C	1309	1	14,14,15	0.29	0	17,19,21	0.49	0
5	NAG	C	1315	1	14,14,15	0.28	0	17,19,21	0.46	0

Mol	Type	Chain	Res	Link	Bond lengths			Bond angles		
					Counts	RMSZ	# Z > 2	Counts	RMSZ	# Z > 2
5	NAG	A	1302	1	14,14,15	0.27	0	17,19,21	0.51	0
5	NAG	B	1314	1	14,14,15	0.25	0	17,19,21	0.46	0
5	NAG	B	1304	1	14,14,15	0.34	0	17,19,21	0.48	0
5	NAG	B	1305	1	14,14,15	0.32	0	17,19,21	0.48	0
5	NAG	B	1303	1	14,14,15	0.34	0	17,19,21	0.48	0
5	NAG	C	1313	1	14,14,15	0.30	0	17,19,21	0.50	0
5	NAG	A	1313	1	14,14,15	0.24	0	17,19,21	0.41	0
5	NAG	C	1304	1	14,14,15	0.34	0	17,19,21	0.47	0
5	NAG	C	1314	1	14,14,15	0.31	0	17,19,21	0.46	0
5	NAG	A	1303	1	14,14,15	0.35	0	17,19,21	0.37	0
5	NAG	B	1306	1	14,14,15	0.28	0	17,19,21	0.44	0
5	NAG	B	1310	1	14,14,15	0.29	0	17,19,21	0.40	0
5	NAG	B	1315	1	14,14,15	0.30	0	17,19,21	0.45	0
5	NAG	B	1302	1	14,14,15	0.30	0	17,19,21	0.52	0
5	NAG	B	1307	1	14,14,15	0.26	0	17,19,21	0.44	0
5	NAG	C	1311	1	14,14,15	0.26	0	17,19,21	0.46	0
5	NAG	A	1311	1	14,14,15	0.25	0	17,19,21	0.46	0
5	NAG	A	1315	1	14,14,15	0.30	0	17,19,21	0.45	0
5	NAG	B	1301	1	14,14,15	0.29	0	17,19,21	0.48	0
5	NAG	A	1310	1	14,14,15	0.27	0	17,19,21	0.42	0
5	NAG	A	1307	1	14,14,15	0.29	0	17,19,21	0.51	0
5	NAG	C	1305	1	14,14,15	0.26	0	17,19,21	0.49	0
5	NAG	A	1301	1	14,14,15	0.31	0	17,19,21	0.52	0
5	NAG	B	1309	1	14,14,15	0.25	0	17,19,21	0.46	0
5	NAG	C	1307	1	14,14,15	0.28	0	17,19,21	0.46	0
5	NAG	B	1312	1	14,14,15	0.37	0	17,19,21	0.50	0
5	NAG	B	1311	1	14,14,15	0.30	0	17,19,21	0.46	0
5	NAG	C	1306	1	14,14,15	0.26	0	17,19,21	0.45	0
5	NAG	C	1312	1	14,14,15	0.29	0	17,19,21	0.46	0
5	NAG	C	1303	1	14,14,15	0.29	0	17,19,21	0.46	0
5	NAG	C	1308	1	14,14,15	0.34	0	17,19,21	0.52	0
5	NAG	B	1308	1	14,14,15	0.31	0	17,19,21	0.50	0
5	NAG	A	1304	1	14,14,15	0.27	0	17,19,21	0.49	0
5	NAG	A	1314	1	14,14,15	0.34	0	17,19,21	0.49	0
5	NAG	A	1308	1	14,14,15	0.28	0	17,19,21	0.41	0
5	NAG	B	1313	1	14,14,15	0.19	0	17,19,21	0.50	0
5	NAG	A	1305	1	14,14,15	0.32	0	17,19,21	0.48	0

In the following table, the Chirals column lists the number of chiral outliers, the number of chiral centers analysed, the number of these observed in the model and the number defined in the Chemical Component Dictionary. Similar counts are reported in the Torsion and Rings columns. '-' means no outliers of that kind were identified.

Mol	Type	Chain	Res	Link	Chirals	Torsions	Rings
5	NAG	C	1301	1	-	2/6/23/26	0/1/1/1
5	NAG	A	1306	1	-	0/6/23/26	0/1/1/1
5	NAG	A	1309	1	-	0/6/23/26	0/1/1/1
5	NAG	A	1312	1	-	2/6/23/26	0/1/1/1
5	NAG	C	1310	1	-	0/6/23/26	0/1/1/1
5	NAG	C	1302	1	-	2/6/23/26	0/1/1/1
5	NAG	C	1309	1	-	2/6/23/26	0/1/1/1
5	NAG	C	1315	1	-	0/6/23/26	0/1/1/1
5	NAG	A	1302	1	-	2/6/23/26	0/1/1/1
5	NAG	B	1314	1	-	2/6/23/26	0/1/1/1
5	NAG	B	1304	1	-	1/6/23/26	0/1/1/1
5	NAG	B	1305	1	-	2/6/23/26	0/1/1/1
5	NAG	B	1303	1	-	0/6/23/26	0/1/1/1
5	NAG	C	1313	1	-	2/6/23/26	0/1/1/1
5	NAG	A	1313	1	-	1/6/23/26	0/1/1/1
5	NAG	C	1304	1	-	0/6/23/26	0/1/1/1
5	NAG	C	1314	1	-	2/6/23/26	0/1/1/1
5	NAG	A	1303	1	-	0/6/23/26	0/1/1/1
5	NAG	B	1306	1	-	2/6/23/26	0/1/1/1
5	NAG	B	1310	1	-	2/6/23/26	0/1/1/1
5	NAG	B	1315	1	-	2/6/23/26	0/1/1/1
5	NAG	B	1302	1	-	0/6/23/26	0/1/1/1
5	NAG	B	1307	1	-	2/6/23/26	0/1/1/1
5	NAG	C	1311	1	-	2/6/23/26	0/1/1/1
5	NAG	A	1311	1	-	2/6/23/26	0/1/1/1
5	NAG	A	1315	1	-	2/6/23/26	0/1/1/1
5	NAG	B	1301	1	-	2/6/23/26	0/1/1/1
5	NAG	A	1310	1	-	2/6/23/26	0/1/1/1
5	NAG	A	1307	1	-	2/6/23/26	0/1/1/1
5	NAG	C	1305	1	-	2/6/23/26	0/1/1/1
5	NAG	A	1301	1	-	2/6/23/26	0/1/1/1
5	NAG	B	1309	1	-	2/6/23/26	0/1/1/1
5	NAG	C	1307	1	-	0/6/23/26	0/1/1/1
5	NAG	B	1312	1	-	1/6/23/26	0/1/1/1
5	NAG	B	1311	1	-	2/6/23/26	0/1/1/1
5	NAG	C	1306	1	-	4/6/23/26	0/1/1/1
5	NAG	C	1312	1	-	2/6/23/26	0/1/1/1

Continued on next page...

Continued from previous page...

Mol	Type	Chain	Res	Link	Chirals	Torsions	Rings
5	NAG	C	1303	1	-	2/6/23/26	0/1/1/1
5	NAG	C	1308	1	-	2/6/23/26	0/1/1/1
5	NAG	B	1308	1	-	2/6/23/26	0/1/1/1
5	NAG	A	1304	1	-	0/6/23/26	0/1/1/1
5	NAG	A	1314	1	-	2/6/23/26	0/1/1/1
5	NAG	A	1308	1	-	2/6/23/26	0/1/1/1
5	NAG	B	1313	1	-	2/6/23/26	0/1/1/1
5	NAG	A	1305	1	-	0/6/23/26	0/1/1/1

There are no bond length outliers.

There are no bond angle outliers.

There are no chirality outliers.

All (67) torsion outliers are listed below:

Mol	Chain	Res	Type	Atoms
5	C	1309	NAG	O5-C5-C6-O6
5	C	1303	NAG	C4-C5-C6-O6
5	C	1301	NAG	O5-C5-C6-O6
5	B	1301	NAG	O5-C5-C6-O6
5	B	1307	NAG	C4-C5-C6-O6
5	C	1303	NAG	O5-C5-C6-O6
5	A	1307	NAG	O5-C5-C6-O6
5	A	1301	NAG	C4-C5-C6-O6
5	A	1311	NAG	C4-C5-C6-O6
5	B	1311	NAG	O5-C5-C6-O6
5	A	1314	NAG	C4-C5-C6-O6
5	B	1306	NAG	C4-C5-C6-O6
5	B	1308	NAG	C4-C5-C6-O6
5	C	1313	NAG	O5-C5-C6-O6
5	C	1312	NAG	C4-C5-C6-O6
5	B	1314	NAG	C4-C5-C6-O6
5	C	1314	NAG	O5-C5-C6-O6
5	C	1302	NAG	C4-C5-C6-O6
5	B	1301	NAG	C4-C5-C6-O6
5	C	1311	NAG	O5-C5-C6-O6
5	A	1301	NAG	O5-C5-C6-O6
5	A	1311	NAG	O5-C5-C6-O6
5	B	1305	NAG	O5-C5-C6-O6
5	C	1301	NAG	C4-C5-C6-O6

Continued on next page...

Continued from previous page...

Mol	Chain	Res	Type	Atoms
5	B	1311	NAG	C4-C5-C6-O6
5	A	1308	NAG	O5-C5-C6-O6
5	C	1309	NAG	C4-C5-C6-O6
5	C	1302	NAG	O5-C5-C6-O6
5	A	1314	NAG	O5-C5-C6-O6
5	B	1307	NAG	O5-C5-C6-O6
5	B	1305	NAG	C4-C5-C6-O6
5	A	1310	NAG	O5-C5-C6-O6
5	B	1306	NAG	O5-C5-C6-O6
5	B	1315	NAG	O5-C5-C6-O6
5	B	1310	NAG	C4-C5-C6-O6
5	B	1315	NAG	C4-C5-C6-O6
5	B	1309	NAG	O5-C5-C6-O6
5	A	1307	NAG	C4-C5-C6-O6
5	A	1310	NAG	C4-C5-C6-O6
5	C	1306	NAG	C8-C7-N2-C2
5	C	1306	NAG	O7-C7-N2-C2
5	B	1313	NAG	C8-C7-N2-C2
5	B	1313	NAG	O7-C7-N2-C2
5	C	1313	NAG	C4-C5-C6-O6
5	B	1309	NAG	C4-C5-C6-O6
5	B	1308	NAG	O5-C5-C6-O6
5	C	1311	NAG	C4-C5-C6-O6
5	B	1314	NAG	O5-C5-C6-O6
5	C	1305	NAG	C4-C5-C6-O6
5	C	1312	NAG	O5-C5-C6-O6
5	A	1302	NAG	C4-C5-C6-O6
5	C	1306	NAG	O5-C5-C6-O6
5	C	1314	NAG	C4-C5-C6-O6
5	A	1312	NAG	O5-C5-C6-O6
5	C	1308	NAG	O5-C5-C6-O6
5	B	1310	NAG	O5-C5-C6-O6
5	A	1308	NAG	C4-C5-C6-O6
5	C	1308	NAG	C4-C5-C6-O6
5	A	1313	NAG	O5-C5-C6-O6
5	C	1305	NAG	O5-C5-C6-O6
5	A	1302	NAG	O5-C5-C6-O6
5	B	1304	NAG	O5-C5-C6-O6
5	C	1306	NAG	C4-C5-C6-O6
5	B	1312	NAG	O5-C5-C6-O6
5	A	1312	NAG	C4-C5-C6-O6
5	A	1315	NAG	C4-C5-C6-O6

Continued on next page...

Continued from previous page...

Mol	Chain	Res	Type	Atoms
5	A	1315	NAG	O5-C5-C6-O6

There are no ring outliers.

2 monomers are involved in 2 short contacts:

Mol	Chain	Res	Type	Clashes	Symm-Clashes
5	B	1305	NAG	1	0
5	C	1307	NAG	1	0

5.7 Other polymers [i](#)

There are no such residues in this entry.

5.8 Polymer linkage issues [i](#)

There are no chain breaks in this entry.

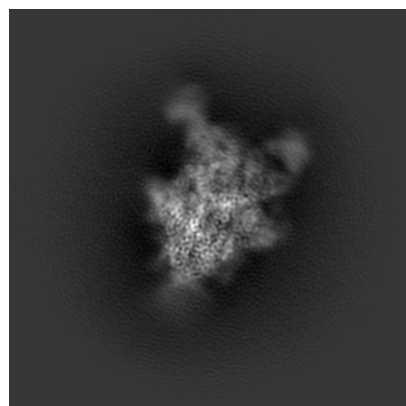
6 Map visualisation [i](#)

This section contains visualisations of the EMDB entry EMD-34040. These allow visual inspection of the internal detail of the map and identification of artifacts.

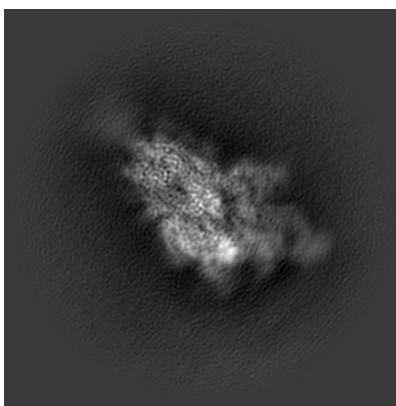
Images derived from a raw map, generated by summing the deposited half-maps, are presented below the corresponding image components of the primary map to allow further visual inspection and comparison with those of the primary map.

6.1 Orthogonal projections [i](#)

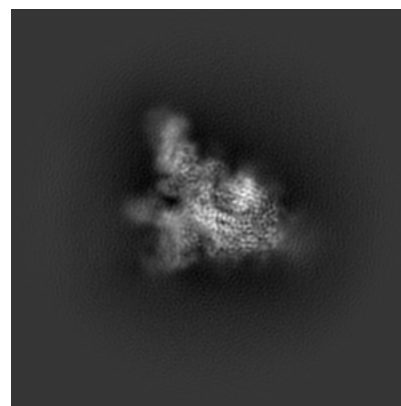
6.1.1 Primary map



X

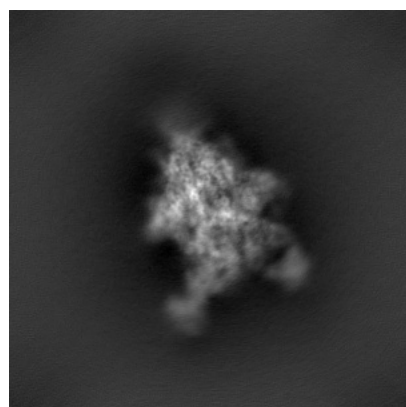


Y

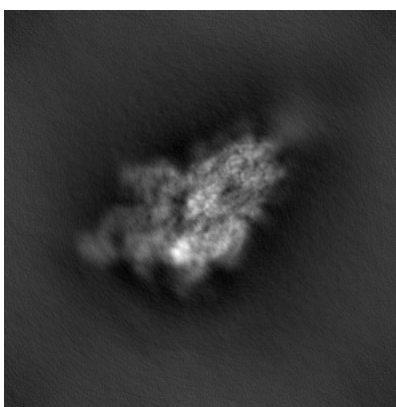


Z

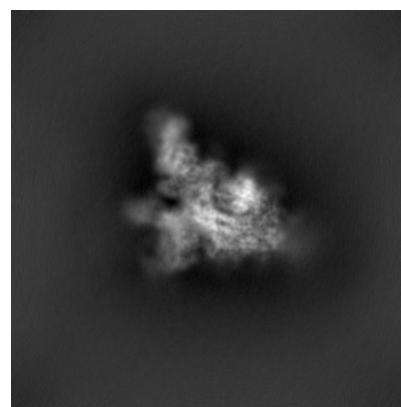
6.1.2 Raw map



X



Y

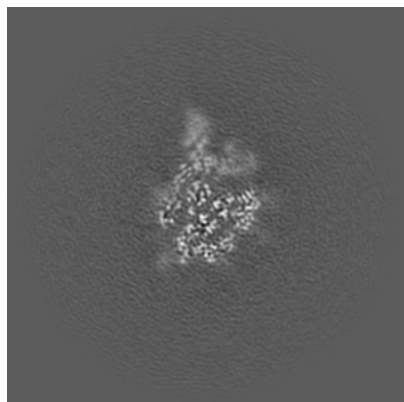


Z

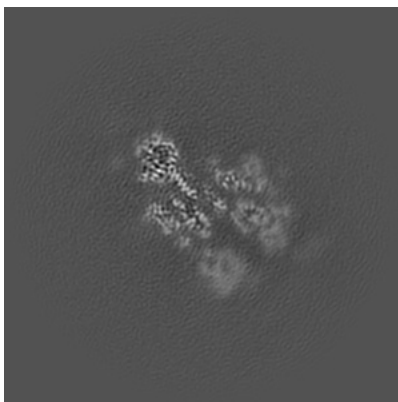
The images above show the map projected in three orthogonal directions.

6.2 Central slices [i](#)

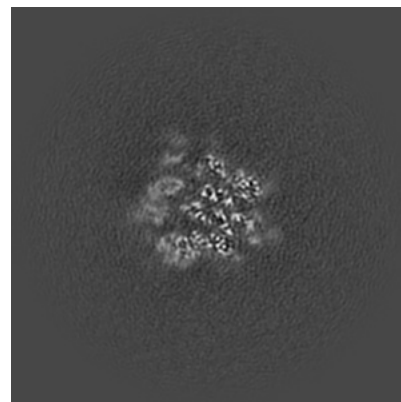
6.2.1 Primary map



X Index: 180

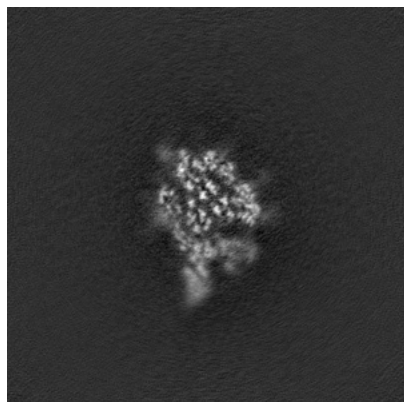


Y Index: 180

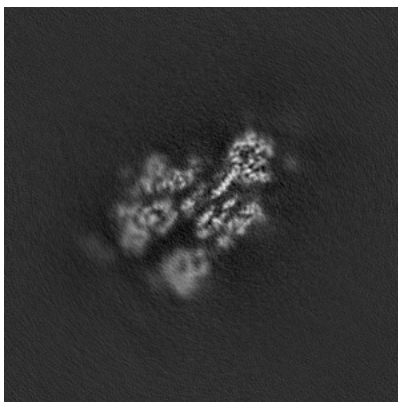


Z Index: 180

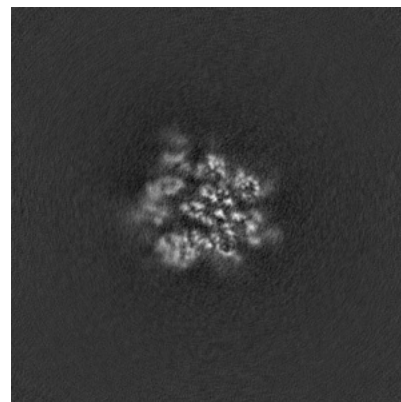
6.2.2 Raw map



X Index: 180



Y Index: 180

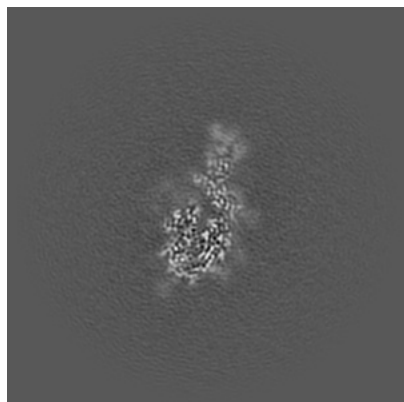


Z Index: 180

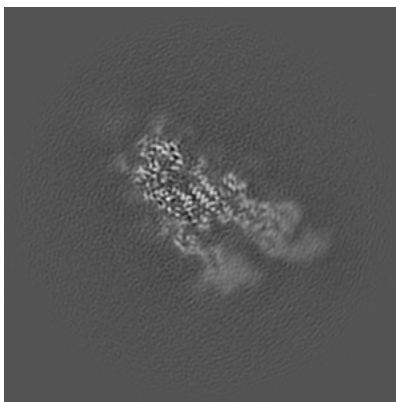
The images above show central slices of the map in three orthogonal directions.

6.3 Largest variance slices [i](#)

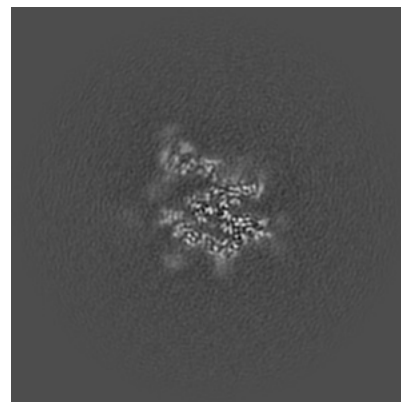
6.3.1 Primary map



X Index: 208

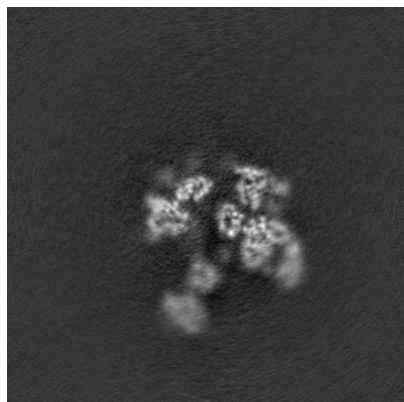


Y Index: 173

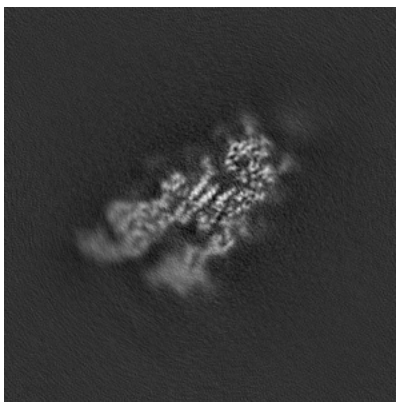


Z Index: 170

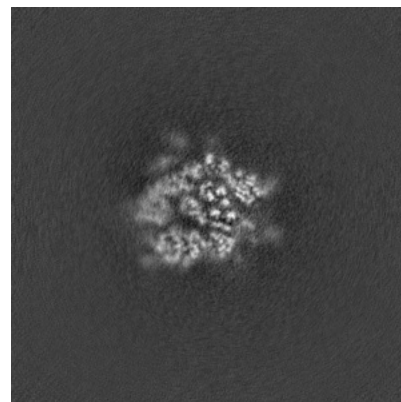
6.3.2 Raw map



X Index: 149



Y Index: 173

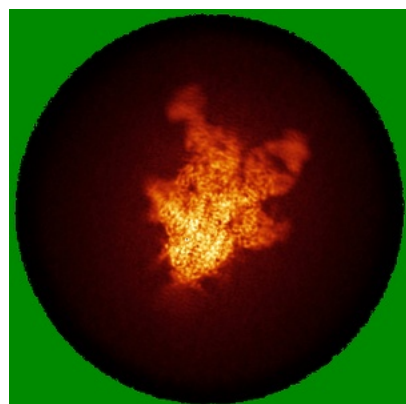


Z Index: 176

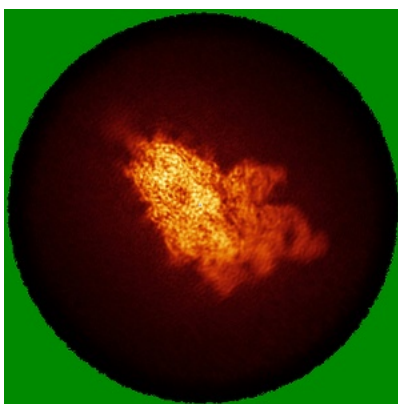
The images above show the largest variance slices of the map in three orthogonal directions.

6.4 Orthogonal standard-deviation projections (False-color) [i](#)

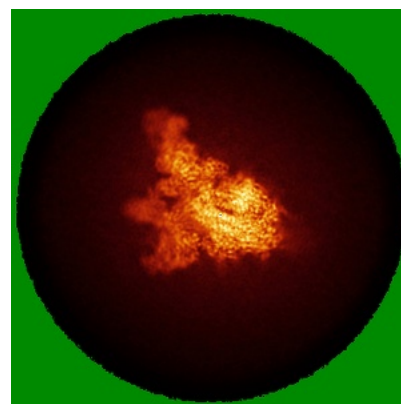
6.4.1 Primary map



X

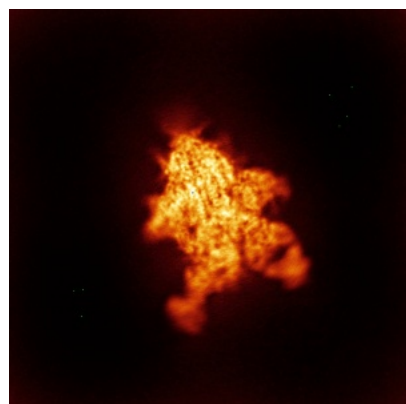


Y

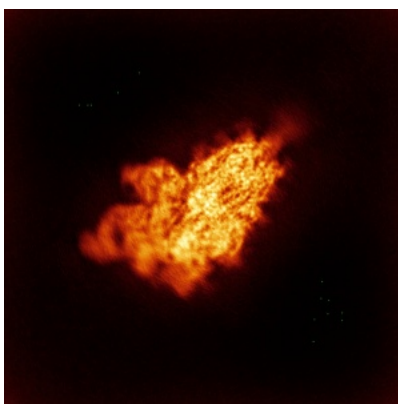


Z

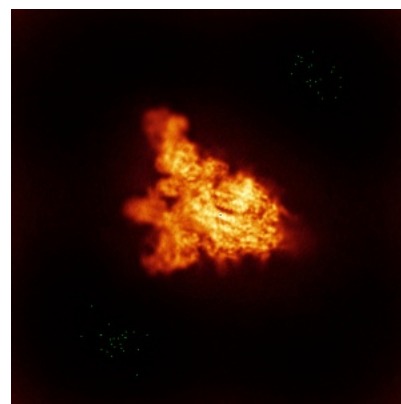
6.4.2 Raw map



X



Y

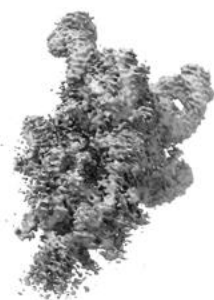


Z

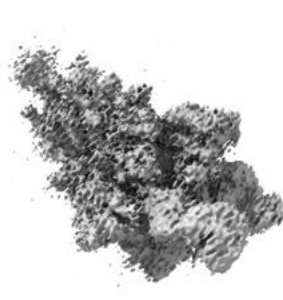
The images above show the map standard deviation projections with false color in three orthogonal directions. Minimum values are shown in green, max in blue, and dark to light orange shades represent small to large values respectively.

6.5 Orthogonal surface views [i](#)

6.5.1 Primary map



X



Y



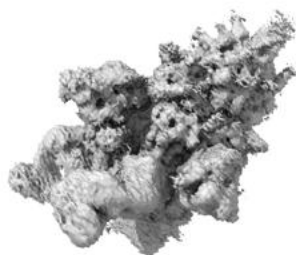
Z

The images above show the 3D surface view of the map at the recommended contour level 0.166. These images, in conjunction with the slice images, may facilitate assessment of whether an appropriate contour level has been provided.

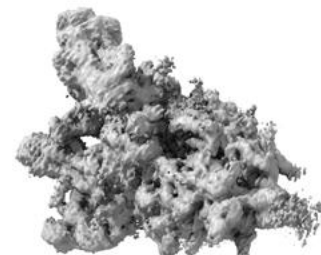
6.5.2 Raw map



X



Y



Z

These images show the 3D surface of the raw map. The raw map's contour level was selected so that its surface encloses the same volume as the primary map does at its recommended contour level.

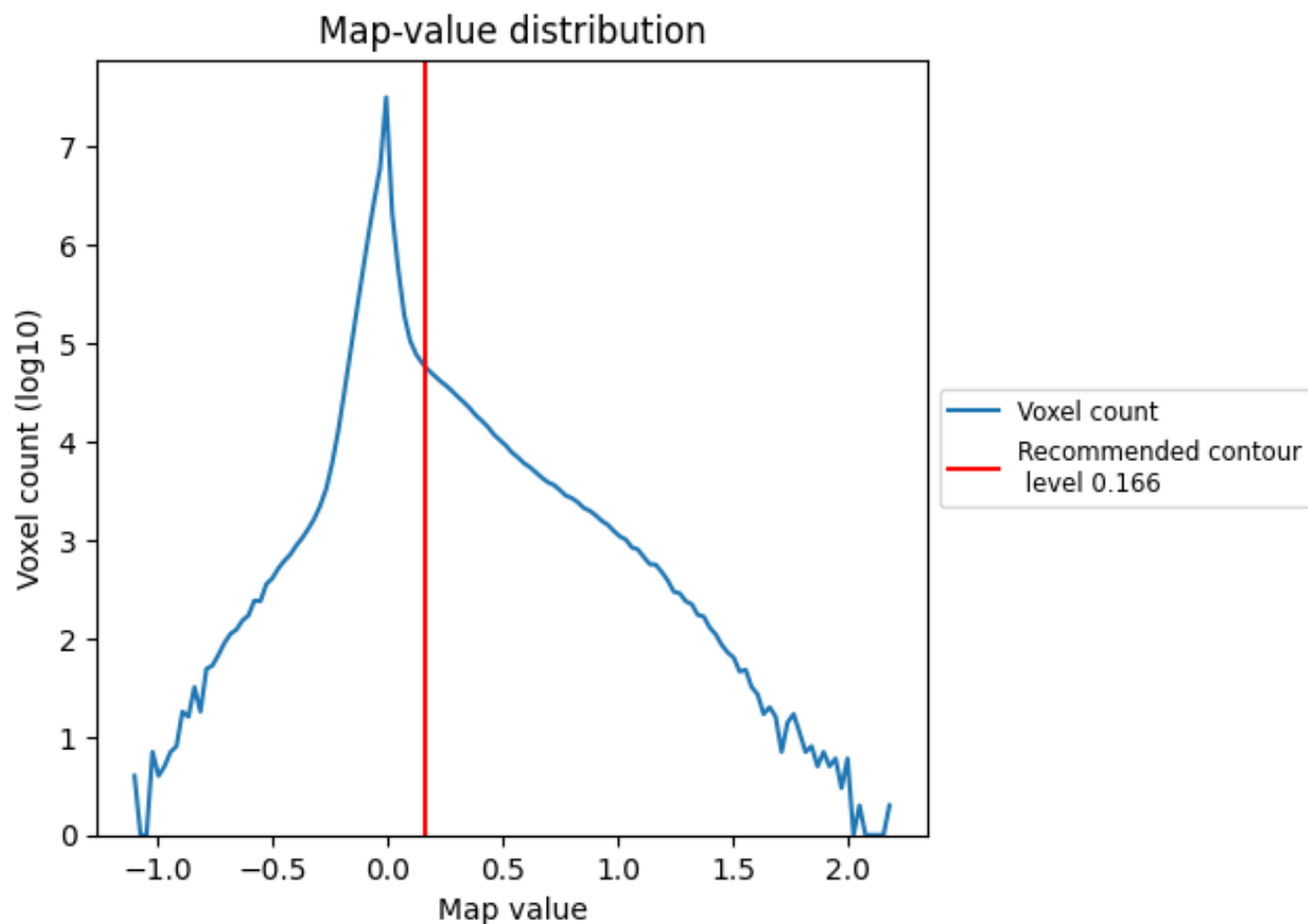
6.6 Mask visualisation [i](#)

This section was not generated. No masks/segmentation were deposited.

7 Map analysis [i](#)

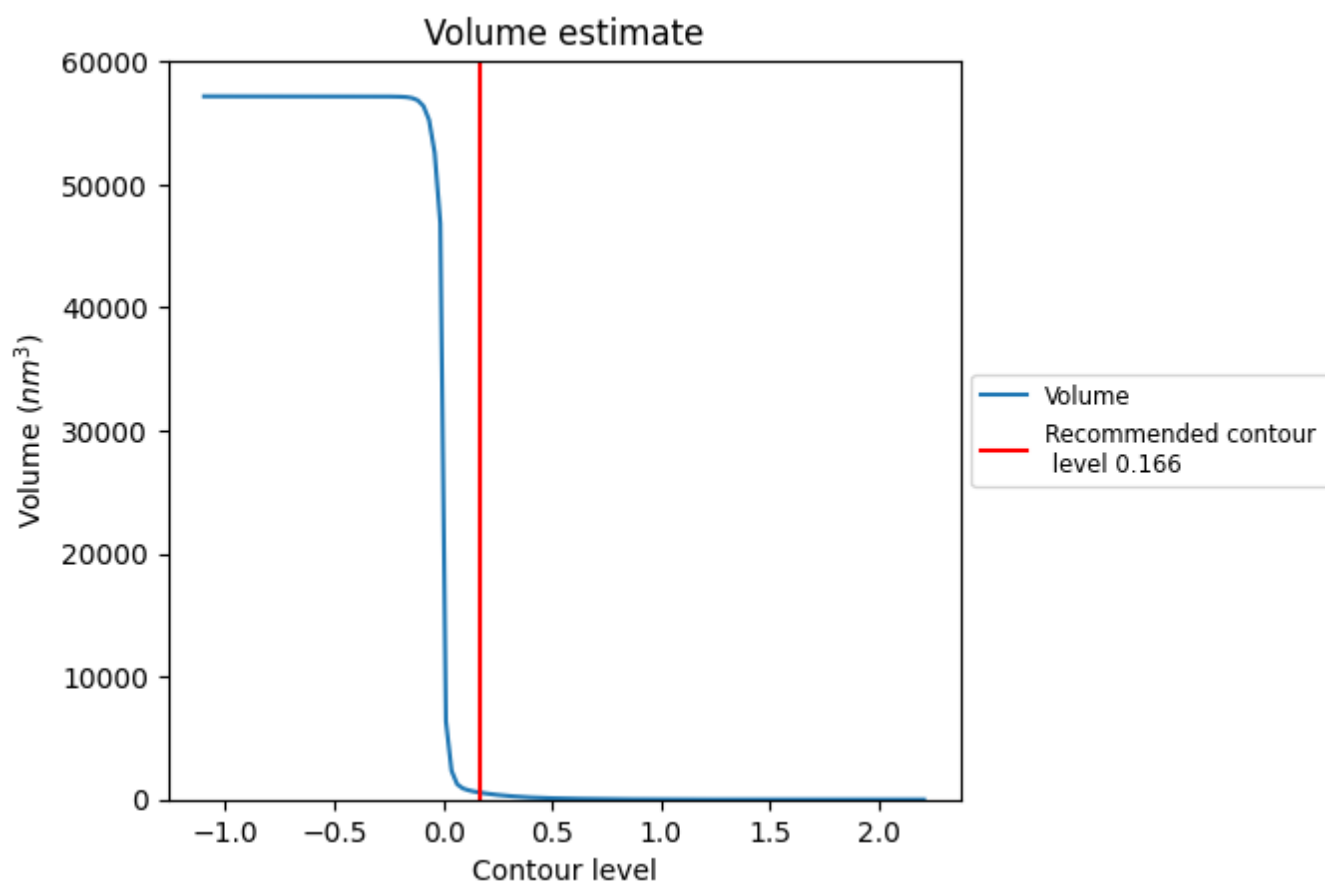
This section contains the results of statistical analysis of the map.

7.1 Map-value distribution [i](#)



The map-value distribution is plotted in 128 intervals along the x-axis. The y-axis is logarithmic. A spike in this graph at zero usually indicates that the volume has been masked.

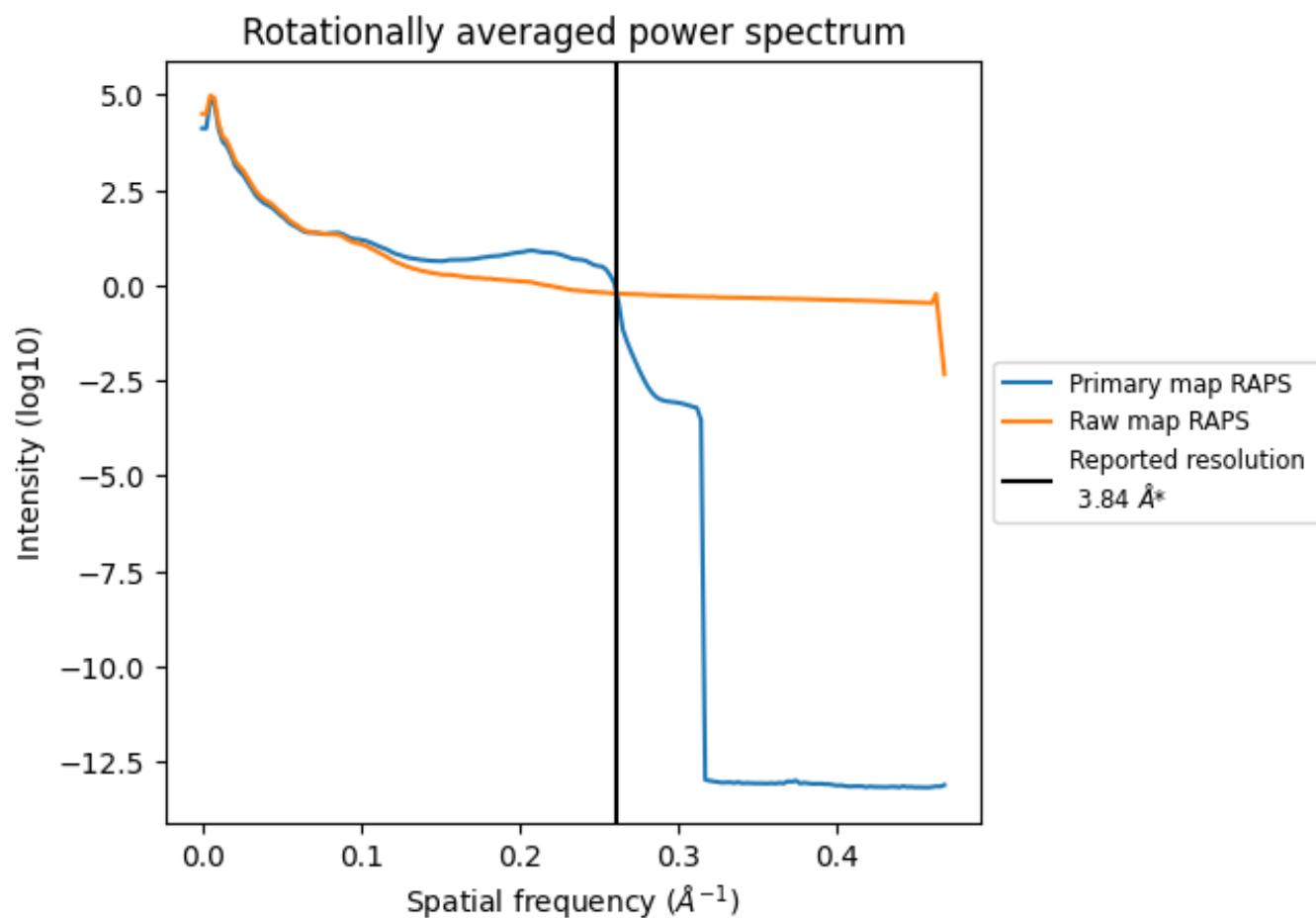
7.2 Volume estimate [i](#)



The volume at the recommended contour level is 572 nm³; this corresponds to an approximate mass of 517 kDa.

The volume estimate graph shows how the enclosed volume varies with the contour level. The recommended contour level is shown as a vertical line and the intersection between the line and the curve gives the volume of the enclosed surface at the given level.

7.3 Rotationally averaged power spectrum ⓘ

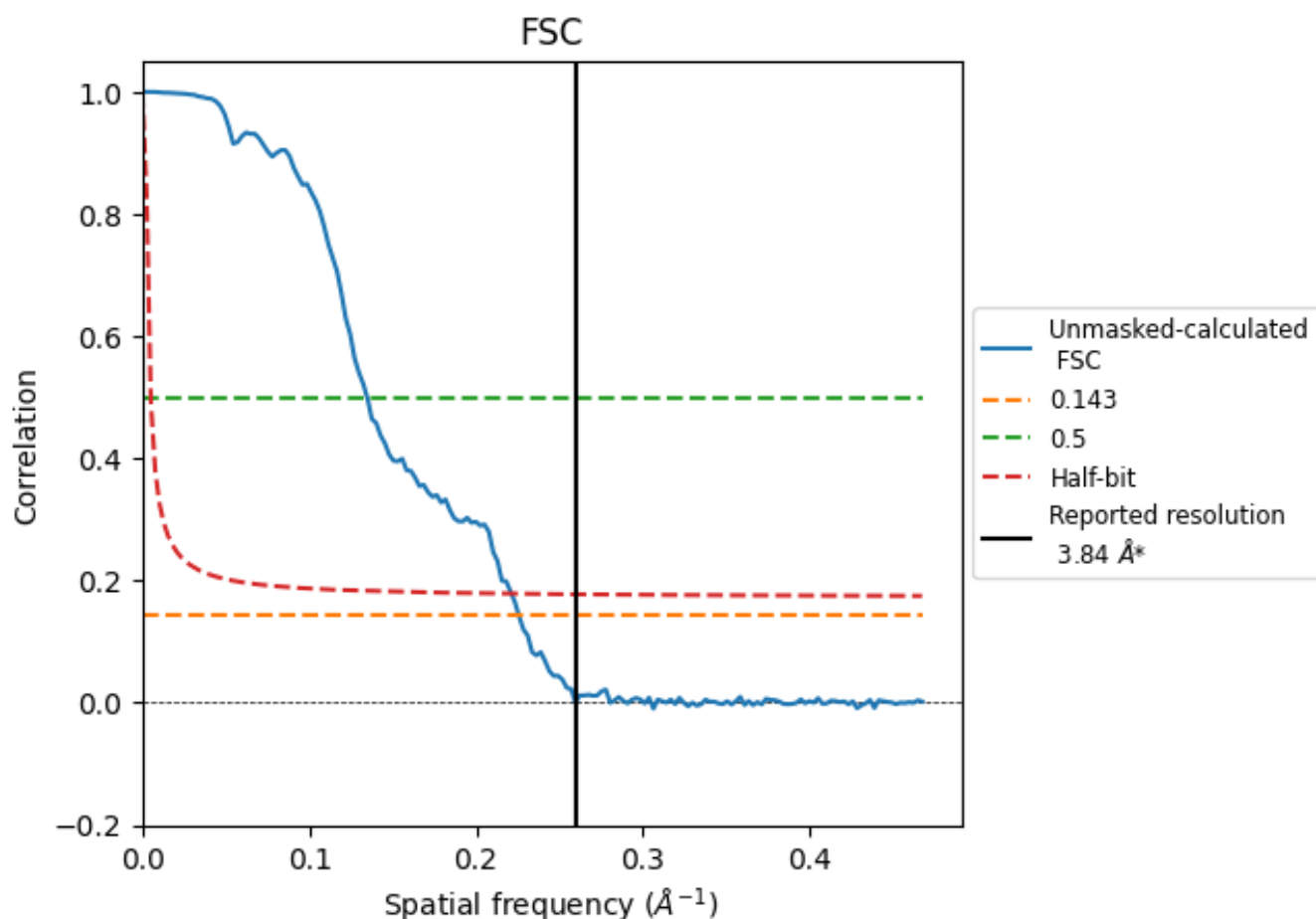


*Reported resolution corresponds to spatial frequency of 0.260 Å⁻¹

8 Fourier-Shell correlation [i](#)

Fourier-Shell Correlation (FSC) is the most commonly used method to estimate the resolution of single-particle and subtomogram-averaged maps. The shape of the curve depends on the imposed symmetry, mask and whether or not the two 3D reconstructions used were processed from a common reference. The reported resolution is shown as a black line. A curve is displayed for the half-bit criterion in addition to lines showing the 0.143 gold standard cut-off and 0.5 cut-off.

8.1 FSC [i](#)



*Reported resolution corresponds to spatial frequency of 0.260 \AA^{-1}

8.2 Resolution estimates [i](#)

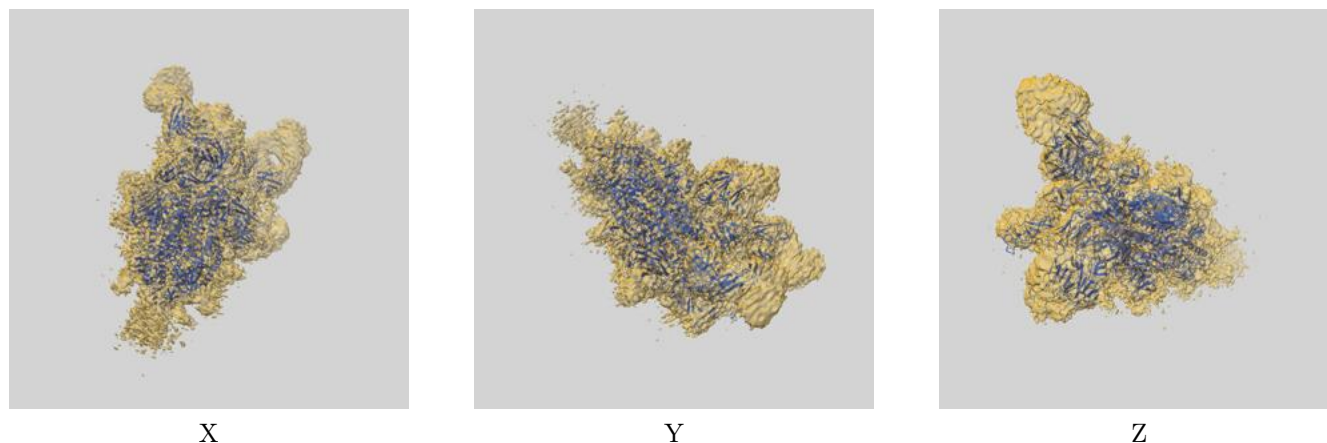
Resolution estimate (Å)	Estimation criterion (FSC cut-off)		
	0.143	0.5	Half-bit
Reported by author	3.84	-	-
Author-provided FSC curve	-	-	-
Unmasked-calculated*	4.43	7.42	4.52

*Resolution estimate based on FSC curve calculated by comparison of deposited half-maps. The value from deposited half-maps intersecting FSC 0.143 CUT-OFF 4.43 differs from the reported value 3.84 by more than 10 %

9 Map-model fit [i](#)

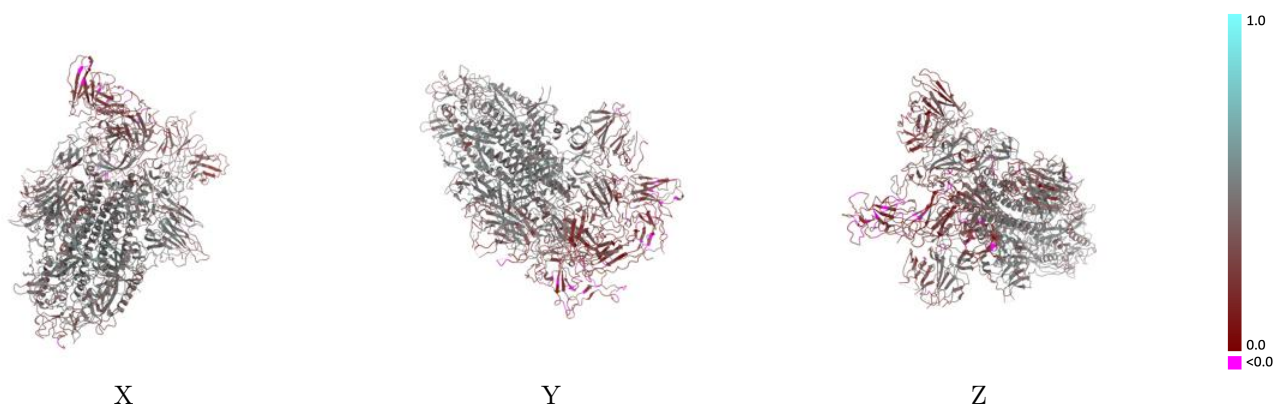
This section contains information regarding the fit between EMDB map EMD-34040 and PDB model 7YQZ. Per-residue inclusion information can be found in section 3 on page 12.

9.1 Map-model overlay [i](#)



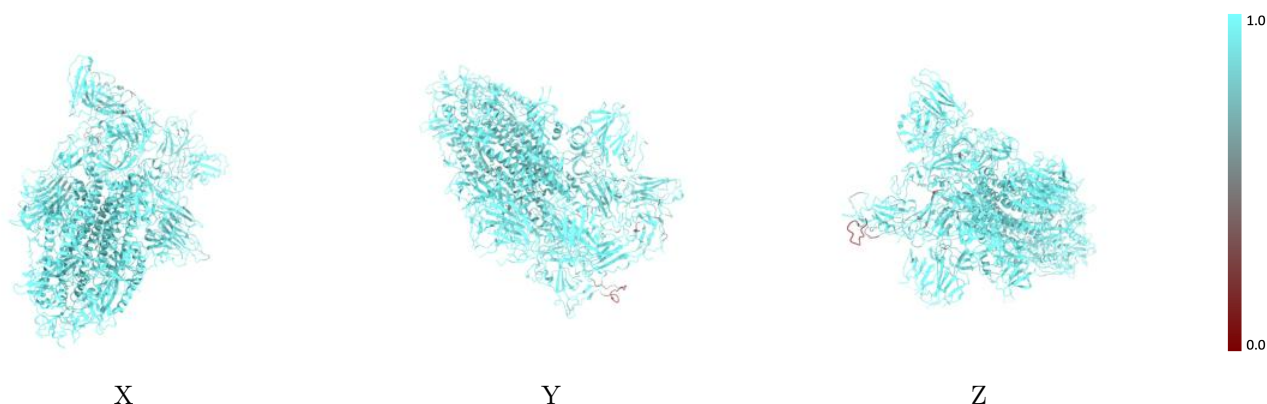
The images above show the 3D surface view of the map at the recommended contour level 0.166 at 50% transparency in yellow overlaid with a ribbon representation of the model coloured in blue. These images allow for the visual assessment of the quality of fit between the atomic model and the map.

9.2 Q-score mapped to coordinate model [i](#)



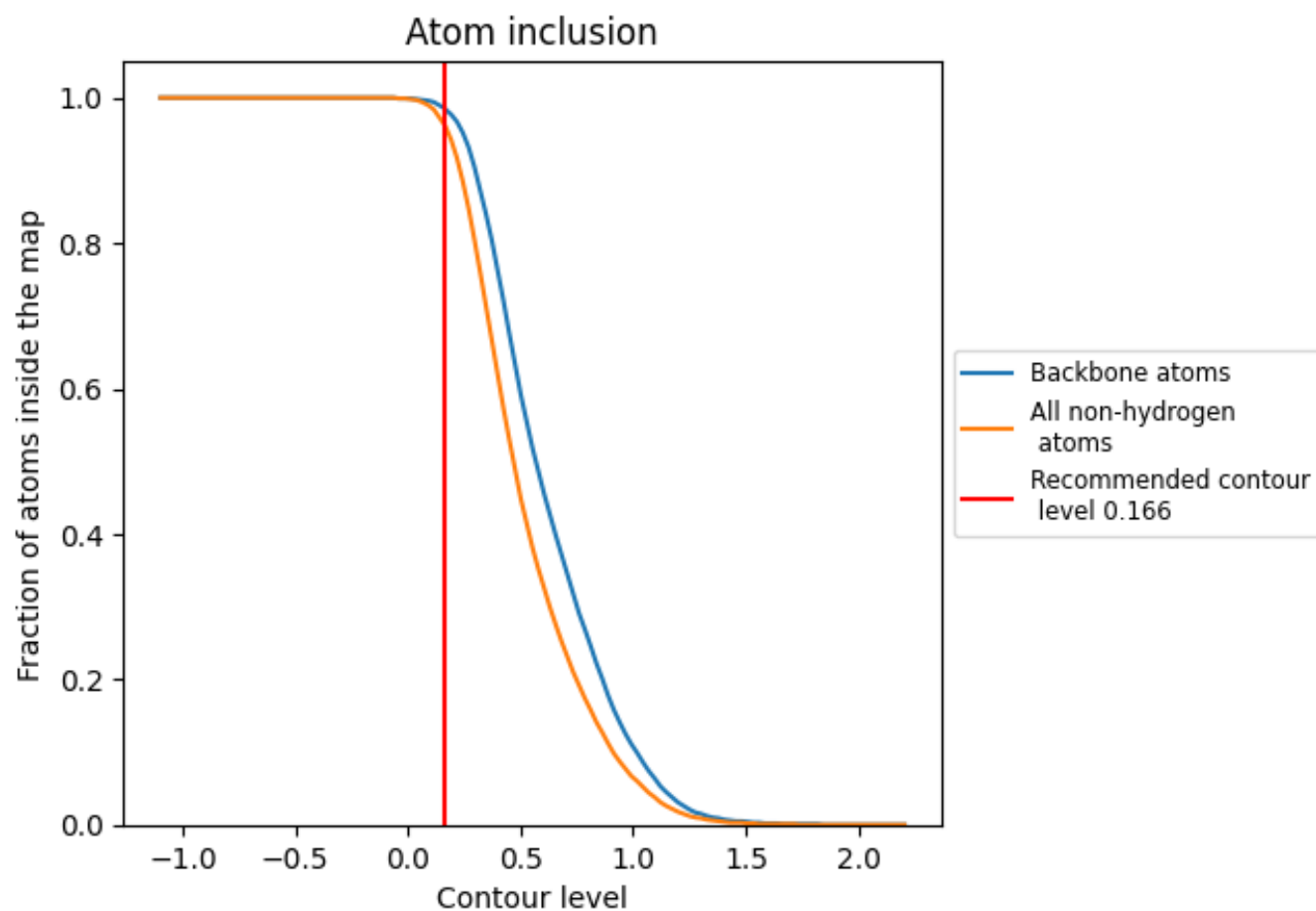
The images above show the model with each residue coloured according to its Q-score. This shows their resolvability in the map with higher Q-score values reflecting better resolvability. Please note: Q-score is calculating the resolvability of atoms, and thus high values are only expected at resolutions at which atoms can be resolved. Low Q-score values may therefore be expected for many entries.

9.3 Atom inclusion mapped to coordinate model [i](#)



The images above show the model with each residue coloured according to its atom inclusion. This shows to what extent they are inside the map at the recommended contour level (0.166).

9.4 Atom inclusion [i](#)



At the recommended contour level, 98% of all backbone atoms, 96% of all non-hydrogen atoms, are inside the map.

9.5 Map-model fit summary ⓘ

The table lists the average atom inclusion at the recommended contour level (0.166) and Q-score for the entire model and for each chain.

Chain	Atom inclusion	Q-score
All	<div><div></div></div> 0.9610	<div><div></div></div> 0.3820
A	<div><div></div></div> 0.9680	<div><div></div></div> 0.4020
B	<div><div></div></div> 0.9510	<div><div></div></div> 0.3880
C	<div><div></div></div> 0.9720	<div><div></div></div> 0.4120
D	<div><div></div></div> 0.9590	<div><div></div></div> 0.4510
E	<div><div></div></div> 0.9590	<div><div></div></div> 0.3350
G	<div><div></div></div> 0.8720	<div><div></div></div> 0.1910
H	<div><div></div></div> 0.9570	<div><div></div></div> 0.2590
I	<div><div></div></div> 0.9660	<div><div></div></div> 0.2470
J	<div><div></div></div> 0.9830	<div><div></div></div> 0.3030

1.0

0.0

<0.0