



## Full wwPDB EM Validation Report ⓘ

Oct 6, 2024 – 08:10 AM JST

PDB ID : 7WZ4  
EMDB ID : EMD-32904  
Title : Structure of an orphan GPCR-G protein signaling complex  
Authors : Xu, J.; Chen, G.; Liu, Z.; Du, Y.  
Deposited on : 2022-02-17  
Resolution : 3.00 Å(reported)

This is a Full wwPDB EM Validation Report for a publicly released PDB entry.

We welcome your comments at [validation@mail.wwpdb.org](mailto:validation@mail.wwpdb.org)

A user guide is available at

<https://www.wwpdb.org/validation/2017/EMValidationReportHelp>

with specific help available everywhere you see the ⓘ symbol.

The types of validation reports are described at

<http://www.wwpdb.org/validation/2017/FAQs#types>.

---

The following versions of software and data (see [references ⓘ](#)) were used in the production of this report:

EMDB validation analysis : 0.0.1.dev113  
MolProbity : 4.02b-467  
Percentile statistics : 20231227.v01 (using entries in the PDB archive December 27th 2023)  
MapQ : 1.9.13  
Ideal geometry (proteins) : Engh & Huber (2001)  
Ideal geometry (DNA, RNA) : Parkinson et al. (1996)  
Validation Pipeline (wwPDB-VP) : 2.39

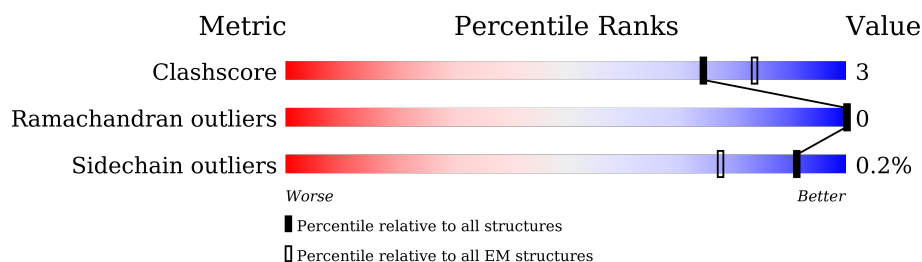
# 1 Overall quality at a glance

The following experimental techniques were used to determine the structure:

*ELECTRON MICROSCOPY*

The reported resolution of this entry is 3.00 Å.

Percentile scores (ranging between 0-100) for global validation metrics of the entry are shown in the following graphic. The table shows the number of entries on which the scores are based.



Metric	Whole archive (#Entries)	EM structures (#Entries)
Clashscore	210492	15764
Ramachandran outliers	207382	16835
Sidechain outliers	206894	16415

The table below summarises the geometric issues observed across the polymeric chains and their fit to the map. The red, orange, yellow and green segments of the bar indicate the fraction of residues that contain outliers for  $\geq 3$ , 2, 1 and 0 types of geometric quality criteria respectively. A grey segment represents the fraction of residues that are not modelled. The numeric value for each fraction is indicated below the corresponding segment, with a dot representing fractions  $\leq 5\%$ . The upper red bar (where present) indicates the fraction of residues that have poor fit to the EM map (all-atom inclusion  $< 40\%$ ). The numeric value is given above the bar.

Mol	Chain	Length	Quality of chain
1	R	520	 40% 5% 55%
2	A	354	 57% 39%
3	B	357	 87% 8% 6%
4	G	71	 75% 21%
5	S	259	 81% 8% 10%

## 2 Entry composition

There are 5 unique types of molecules in this entry. The entry contains 8187 atoms, of which 0 are hydrogens and 0 are deuteriums.

In the tables below, the AltConf column contains the number of residues with at least one atom in alternate conformation and the Trace column contains the number of residues modelled with at most 2 atoms.

- Molecule 1 is a protein called Probable G-protein coupled receptor 88.

Mol	Chain	Residues	Atoms					AltConf	Trace
1	R	233	Total	C	N	O	S	0	0
			1692	1099	298	284	11		

There are 136 discrepancies between the modelled and reference sequences:

Chain	Residue	Modelled	Actual	Comment	Reference
R	-123	ASP	-	expression tag	UNP Q9GZN0
R	-122	TYR	-	expression tag	UNP Q9GZN0
R	-121	LYS	-	expression tag	UNP Q9GZN0
R	-120	ASP	-	expression tag	UNP Q9GZN0
R	-119	ASP	-	expression tag	UNP Q9GZN0
R	-118	ASP	-	expression tag	UNP Q9GZN0
R	-117	ASP	-	expression tag	UNP Q9GZN0
R	-116	LYS	-	expression tag	UNP Q9GZN0
R	-115	LEU	-	expression tag	UNP Q9GZN0
R	-114	GLU	-	expression tag	UNP Q9GZN0
R	-113	VAL	-	expression tag	UNP Q9GZN0
R	-112	LEU	-	expression tag	UNP Q9GZN0
R	-111	PHE	-	expression tag	UNP Q9GZN0
R	-110	GLN	-	expression tag	UNP Q9GZN0
R	-109	GLY	-	expression tag	UNP Q9GZN0
R	-108	PRO	-	expression tag	UNP Q9GZN0
R	-107	GLY	-	expression tag	UNP Q9GZN0
R	-106	SER	-	expression tag	UNP Q9GZN0
R	-105	ALA	-	expression tag	UNP Q9GZN0
R	-104	ASP	-	expression tag	UNP Q9GZN0
R	-103	LEU	-	expression tag	UNP Q9GZN0
R	-102	GLU	-	expression tag	UNP Q9GZN0
R	-101	ASP	-	expression tag	UNP Q9GZN0
R	-100	ASN	-	expression tag	UNP Q9GZN0
R	-99	TRP	-	expression tag	UNP Q9GZN0
R	-98	GLU	-	expression tag	UNP Q9GZN0
R	-97	THR	-	expression tag	UNP Q9GZN0
R	-96	LEU	-	expression tag	UNP Q9GZN0

*Continued on next page...*

*Continued from previous page...*

Chain	Residue	Modelled	Actual	Comment	Reference
R	-95	ASN	-	expression tag	UNP Q9GZN0
R	-94	ASP	-	expression tag	UNP Q9GZN0
R	-93	ASN	-	expression tag	UNP Q9GZN0
R	-92	LEU	-	expression tag	UNP Q9GZN0
R	-91	LYS	-	expression tag	UNP Q9GZN0
R	-90	VAL	-	expression tag	UNP Q9GZN0
R	-89	ILE	-	expression tag	UNP Q9GZN0
R	-88	GLU	-	expression tag	UNP Q9GZN0
R	-87	LYS	-	expression tag	UNP Q9GZN0
R	-86	ALA	-	expression tag	UNP Q9GZN0
R	-85	ASP	-	expression tag	UNP Q9GZN0
R	-84	ASN	-	expression tag	UNP Q9GZN0
R	-83	ALA	-	expression tag	UNP Q9GZN0
R	-82	ALA	-	expression tag	UNP Q9GZN0
R	-81	GLN	-	expression tag	UNP Q9GZN0
R	-80	VAL	-	expression tag	UNP Q9GZN0
R	-79	LYS	-	expression tag	UNP Q9GZN0
R	-78	ASP	-	expression tag	UNP Q9GZN0
R	-77	ALA	-	expression tag	UNP Q9GZN0
R	-76	LEU	-	expression tag	UNP Q9GZN0
R	-75	THR	-	expression tag	UNP Q9GZN0
R	-74	LYS	-	expression tag	UNP Q9GZN0
R	-73	MET	-	expression tag	UNP Q9GZN0
R	-72	ARG	-	expression tag	UNP Q9GZN0
R	-71	ALA	-	expression tag	UNP Q9GZN0
R	-70	ALA	-	expression tag	UNP Q9GZN0
R	-69	ALA	-	expression tag	UNP Q9GZN0
R	-68	LEU	-	expression tag	UNP Q9GZN0
R	-67	ASP	-	expression tag	UNP Q9GZN0
R	-66	ALA	-	expression tag	UNP Q9GZN0
R	-65	GLN	-	expression tag	UNP Q9GZN0
R	-64	LYS	-	expression tag	UNP Q9GZN0
R	-63	ALA	-	expression tag	UNP Q9GZN0
R	-62	THR	-	expression tag	UNP Q9GZN0
R	-61	PRO	-	expression tag	UNP Q9GZN0
R	-60	PRO	-	expression tag	UNP Q9GZN0
R	-59	LYS	-	expression tag	UNP Q9GZN0
R	-58	LEU	-	expression tag	UNP Q9GZN0
R	-57	GLU	-	expression tag	UNP Q9GZN0
R	-56	ASP	-	expression tag	UNP Q9GZN0
R	-55	LYS	-	expression tag	UNP Q9GZN0
R	-54	SER	-	expression tag	UNP Q9GZN0

*Continued on next page...*

*Continued from previous page...*

Chain	Residue	Modelled	Actual	Comment	Reference
R	-53	PRO	-	expression tag	UNP Q9GZN0
R	-52	ASP	-	expression tag	UNP Q9GZN0
R	-51	SER	-	expression tag	UNP Q9GZN0
R	-50	PRO	-	expression tag	UNP Q9GZN0
R	-49	GLU	-	expression tag	UNP Q9GZN0
R	-48	MET	-	expression tag	UNP Q9GZN0
R	-47	LYS	-	expression tag	UNP Q9GZN0
R	-46	ASP	-	expression tag	UNP Q9GZN0
R	-45	PHE	-	expression tag	UNP Q9GZN0
R	-44	ARG	-	expression tag	UNP Q9GZN0
R	-43	HIS	-	expression tag	UNP Q9GZN0
R	-42	GLY	-	expression tag	UNP Q9GZN0
R	-41	PHE	-	expression tag	UNP Q9GZN0
R	-40	ASP	-	expression tag	UNP Q9GZN0
R	-39	ILE	-	expression tag	UNP Q9GZN0
R	-38	LEU	-	expression tag	UNP Q9GZN0
R	-37	VAL	-	expression tag	UNP Q9GZN0
R	-36	GLY	-	expression tag	UNP Q9GZN0
R	-35	GLN	-	expression tag	UNP Q9GZN0
R	-34	ILE	-	expression tag	UNP Q9GZN0
R	-33	ASP	-	expression tag	UNP Q9GZN0
R	-32	ASP	-	expression tag	UNP Q9GZN0
R	-31	ALA	-	expression tag	UNP Q9GZN0
R	-30	LEU	-	expression tag	UNP Q9GZN0
R	-29	LYS	-	expression tag	UNP Q9GZN0
R	-28	LEU	-	expression tag	UNP Q9GZN0
R	-27	ALA	-	expression tag	UNP Q9GZN0
R	-26	ASN	-	expression tag	UNP Q9GZN0
R	-25	GLU	-	expression tag	UNP Q9GZN0
R	-24	GLY	-	expression tag	UNP Q9GZN0
R	-23	LYS	-	expression tag	UNP Q9GZN0
R	-22	VAL	-	expression tag	UNP Q9GZN0
R	-21	LYS	-	expression tag	UNP Q9GZN0
R	-20	GLU	-	expression tag	UNP Q9GZN0
R	-19	ALA	-	expression tag	UNP Q9GZN0
R	-18	GLN	-	expression tag	UNP Q9GZN0
R	-17	ALA	-	expression tag	UNP Q9GZN0
R	-16	ALA	-	expression tag	UNP Q9GZN0
R	-15	ALA	-	expression tag	UNP Q9GZN0
R	-14	GLU	-	expression tag	UNP Q9GZN0
R	-13	GLN	-	expression tag	UNP Q9GZN0
R	-12	LEU	-	expression tag	UNP Q9GZN0

*Continued on next page...*

*Continued from previous page...*

Chain	Residue	Modelled	Actual	Comment	Reference
R	-11	LYS	-	expression tag	UNP Q9GZN0
R	-10	THR	-	expression tag	UNP Q9GZN0
R	-9	THR	-	expression tag	UNP Q9GZN0
R	-8	ARG	-	expression tag	UNP Q9GZN0
R	-7	ASN	-	expression tag	UNP Q9GZN0
R	-6	ALA	-	expression tag	UNP Q9GZN0
R	-5	TYR	-	expression tag	UNP Q9GZN0
R	-4	ILE	-	expression tag	UNP Q9GZN0
R	-3	GLN	-	expression tag	UNP Q9GZN0
R	-2	LYS	-	expression tag	UNP Q9GZN0
R	-1	TYR	-	expression tag	UNP Q9GZN0
R	0	LEU	-	expression tag	UNP Q9GZN0
R	385	LEU	-	expression tag	UNP Q9GZN0
R	386	GLU	-	expression tag	UNP Q9GZN0
R	387	HIS	-	expression tag	UNP Q9GZN0
R	388	HIS	-	expression tag	UNP Q9GZN0
R	389	HIS	-	expression tag	UNP Q9GZN0
R	390	HIS	-	expression tag	UNP Q9GZN0
R	391	HIS	-	expression tag	UNP Q9GZN0
R	392	HIS	-	expression tag	UNP Q9GZN0
R	393	HIS	-	expression tag	UNP Q9GZN0
R	394	HIS	-	expression tag	UNP Q9GZN0
R	395	HIS	-	expression tag	UNP Q9GZN0
R	396	HIS	-	expression tag	UNP Q9GZN0

- Molecule 2 is a protein called Guanine nucleotide-binding protein G(i) subunit alpha-1.

Mol	Chain	Residues	Atoms					AltConf	Trace
2	A	216	Total	C	N	O	S	0	0
			1715	1096	289	318	12		

- Molecule 3 is a protein called Guanine nucleotide-binding protein G(I)/G(S)/G(T) subunit beta-1.

Mol	Chain	Residues	Atoms					AltConf	Trace
3	B	337	Total	C	N	O	S	0	0
			2577	1592	460	504	21		

There are 18 discrepancies between the modelled and reference sequences:

Chain	Residue	Modelled	Actual	Comment	Reference
B	-16	HIS	-	expression tag	UNP P62873

*Continued on next page...*

*Continued from previous page...*

Chain	Residue	Modelled	Actual	Comment	Reference
B	-15	HIS	-	expression tag	UNP P62873
B	-14	HIS	-	expression tag	UNP P62873
B	-13	HIS	-	expression tag	UNP P62873
B	-12	HIS	-	expression tag	UNP P62873
B	-11	HIS	-	expression tag	UNP P62873
B	-10	LEU	-	expression tag	UNP P62873
B	-9	GLU	-	expression tag	UNP P62873
B	-8	VAL	-	expression tag	UNP P62873
B	-7	LEU	-	expression tag	UNP P62873
B	-6	PHE	-	expression tag	UNP P62873
B	-5	GLN	-	expression tag	UNP P62873
B	-4	GLY	-	expression tag	UNP P62873
B	-3	PRO	-	expression tag	UNP P62873
B	-2	GLY	-	expression tag	UNP P62873
B	-1	SER	-	expression tag	UNP P62873
B	0	SER	-	expression tag	UNP P62873
B	1	GLY	-	expression tag	UNP P62873

- Molecule 4 is a protein called Guanine nucleotide-binding protein G(I)/G(S)/G(O) subunit gamma-2.

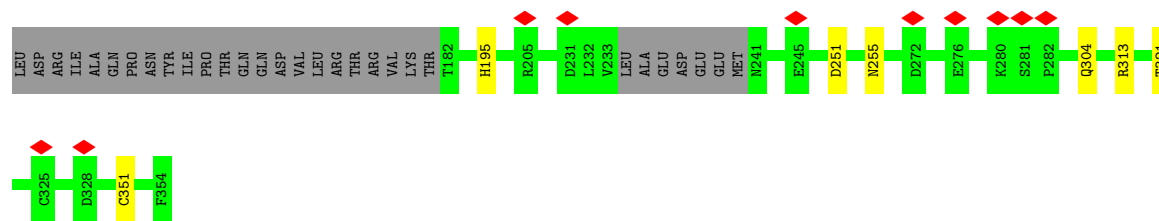
Mol	Chain	Residues	Atoms					AltConf	Trace
4	G	56	Total	C	N	O	S	0	0
			431	270	76	82	3		

- Molecule 5 is a protein called scFv16.

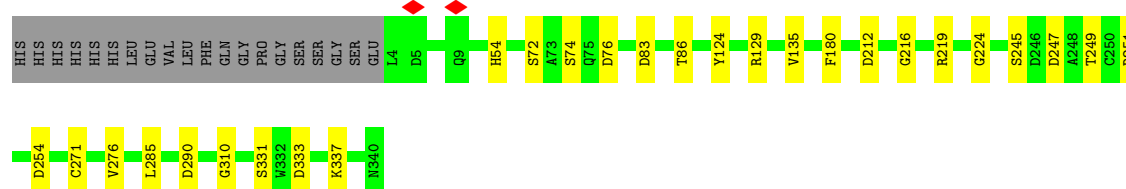
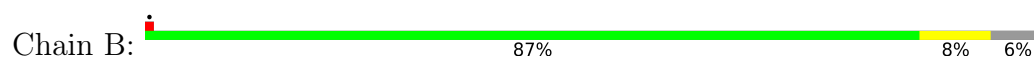
Mol	Chain	Residues	Atoms					AltConf	Trace
5	S	233	Total	C	N	O	S	0	0
			1772	1128	296	338	10		



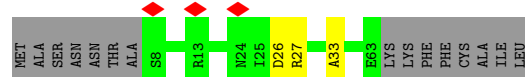
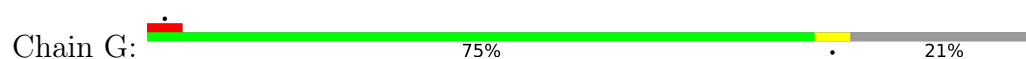




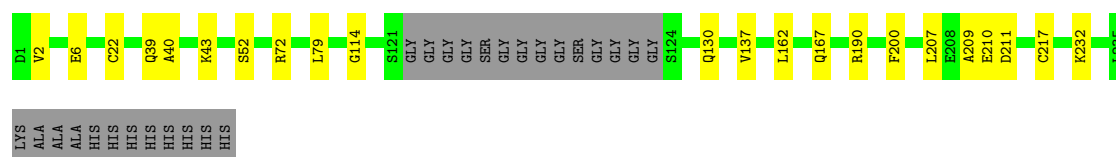
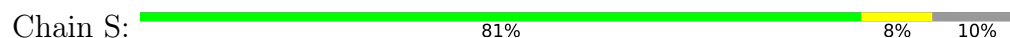
- Molecule 3: Guanine nucleotide-binding protein G(I)/G(S)/G(T) subunit beta-1



- Molecule 4: Guanine nucleotide-binding protein G(I)/G(S)/G(O) subunit gamma-2



- Molecule 5: scFv16



## 4 Experimental information

Property	Value	Source
EM reconstruction method	SINGLE PARTICLE	Depositor
Imposed symmetry	POINT, Not provided	
Number of particles used	314834	Depositor
Resolution determination method	FSC 0.143 CUT-OFF	Depositor
CTF correction method	PHASE FLIPPING AND AMPLITUDE CORRECTION	Depositor
Microscope	FEI TITAN KRIOS	Depositor
Voltage (kV)	300	Depositor
Electron dose ( $e^-/\text{\AA}^2$ )	56	Depositor
Minimum defocus (nm)	800	Depositor
Maximum defocus (nm)	2000	Depositor
Magnification	105000	Depositor
Image detector	GATAN K3 BIOQUANTUM (6k x 4k)	Depositor
Maximum map value	1.814	Depositor
Minimum map value	-1.300	Depositor
Average map value	-0.000	Depositor
Map value standard deviation	0.036	Depositor
Recommended contour level	0.14	Depositor
Map size ( $\text{\AA}$ )	272.0, 272.0, 272.0	wwPDB
Map dimensions	320, 320, 320	wwPDB
Map angles ( $^\circ$ )	90.0, 90.0, 90.0	wwPDB
Pixel spacing ( $\text{\AA}$ )	0.85, 0.85, 0.85	Depositor

## 5 Model quality [i](#)

### 5.1 Standard geometry [i](#)

The Z score for a bond length (or angle) is the number of standard deviations the observed value is removed from the expected value. A bond length (or angle) with  $|Z| > 5$  is considered an outlier worth inspection. RMSZ is the root-mean-square of all Z scores of the bond lengths (or angles).

Mol	Chain	Bond lengths		Bond angles	
		RMSZ	# Z  >5	RMSZ	# Z  >5
1	R	0.25	0/1722	0.41	0/2354
2	A	0.25	0/1744	0.40	0/2341
3	B	0.27	0/2624	0.48	0/3559
4	G	0.25	0/437	0.42	0/589
5	S	0.28	0/1816	0.46	0/2465
All	All	0.26	0/8343	0.44	0/11308

There are no bond length outliers.

There are no bond angle outliers.

There are no chirality outliers.

There are no planarity outliers.

### 5.2 Too-close contacts [i](#)

In the following table, the Non-H and H(model) columns list the number of non-hydrogen atoms and hydrogen atoms in the chain respectively. The H(added) column lists the number of hydrogen atoms added and optimized by MolProbity. The Clashes column lists the number of clashes within the asymmetric unit, whereas Symm-Clashes lists symmetry-related clashes.

Mol	Chain	Non-H	H(model)	H(added)	Clashes	Symm-Clashes
1	R	1692	0	1734	14	0
2	A	1715	0	1700	8	0
3	B	2577	0	2475	16	0
4	G	431	0	441	2	0
5	S	1772	0	1698	12	0
All	All	8187	0	8048	49	0

The all-atom clashscore is defined as the number of clashes found per 1000 atoms (including hydrogen atoms). The all-atom clashscore for this structure is 3.

All (49) close contacts within the same asymmetric unit are listed below, sorted by their clash magnitude.

Atom-1	Atom-2	Interatomic distance (Å)	Clash overlap (Å)
3:B:74:SER:OG	3:B:76:ASP:OD1	2.10	0.70
3:B:331:SER:OG	3:B:333:ASP:OD1	2.10	0.68
5:S:190:ARG:NH2	5:S:211:ASP:OD2	2.28	0.66
5:S:137:VAL:HG11	5:S:207:LEU:HD13	1.79	0.64
5:S:40:ALA:HB3	5:S:43:LYS:HB2	1.79	0.64
3:B:271:CYS:HB2	3:B:290:ASP:HB2	1.80	0.63
3:B:245:SER:OG	3:B:247:ASP:OD1	2.14	0.62
2:A:33:GLU:HG2	2:A:195:HIS:HB3	1.82	0.62
5:S:39:GLN:HE22	5:S:167:GLN:HE22	1.48	0.61
5:S:130:GLN:NE2	5:S:217:CYS:SG	2.74	0.60
5:S:52:SER:O	5:S:72:ARG:NH1	2.35	0.60
3:B:212:ASP:OD2	3:B:219:ARG:NH1	2.36	0.59
1:R:340:ASN:HB3	1:R:343:PHE:HB2	1.85	0.58
5:S:22:CYS:HB3	5:S:79:LEU:HB3	1.84	0.58
4:G:26:ASP:OD1	4:G:27:ARG:N	2.37	0.58
1:R:63:GLN:OE1	1:R:67:ASN:ND2	2.38	0.57
2:A:33:GLU:OE1	2:A:195:HIS:ND1	2.37	0.56
2:A:251:ASP:OD1	2:A:255:ASN:ND2	2.40	0.55
3:B:180:PHE:CE2	3:B:216:GLY:HA2	2.45	0.51
3:B:310:GLY:O	3:B:337:LYS:NZ	2.44	0.51
1:R:136:LEU:HD11	1:R:207:LEU:HD11	1.92	0.51
1:R:56:VAL:HG11	1:R:71:VAL:HG21	1.92	0.51
3:B:83:ASP:OD2	3:B:86:THR:OG1	2.28	0.50
3:B:129:ARG:HG2	5:S:2:VAL:HG21	1.93	0.50
2:A:304:GLN:HG3	2:A:321:THR:HG21	1.94	0.49
5:S:6:GLU:OE1	5:S:114:GLY:N	2.40	0.49
1:R:116:ARG:O	1:R:120:LEU:HG	2.15	0.47
1:R:132:CYS:SG	1:R:204:GLN:HG3	2.54	0.47
1:R:49:ASN:HB2	1:R:78:LEU:HD13	1.98	0.45
2:A:49:ILE:HA	2:A:52:GLN:OE1	2.17	0.45
2:A:6:SER:OG	2:A:7:ALA:N	2.50	0.45
3:B:180:PHE:HE2	3:B:216:GLY:HA2	1.82	0.44
3:B:254:ASP:OD2	4:G:33:ALA:HB1	2.17	0.44
3:B:124:TYR:CE2	3:B:135:VAL:HG22	2.52	0.44
1:R:122:LEU:HD12	1:R:169:ALA:HB1	1.99	0.44
5:S:232:LYS:HE3	5:S:232:LYS:HB3	1.84	0.43
1:R:124:LEU:O	1:R:128:LEU:HG	2.19	0.43
1:R:114:LEU:HD23	1:R:114:LEU:HA	1.86	0.42
3:B:276:VAL:HG13	3:B:285:LEU:HD11	2.01	0.42
1:R:141:LEU:HD13	1:R:149:TYR:CZ	2.55	0.42
3:B:224:GLY:O	3:B:251:ARG:NH1	2.53	0.42
3:B:249:THR:HG21	3:B:251:ARG:HE	1.83	0.42

*Continued on next page...*

*Continued from previous page...*

Atom-1	Atom-2	Interatomic distance (Å)	Clash overlap (Å)
5:S:162:LEU:HD22	5:S:200:PHE:CG	2.54	0.41
1:R:329:SER:HA	1:R:332:ASN:OD1	2.20	0.41
5:S:209:ALA:O	5:S:210:GLU:HG2	2.20	0.41
3:B:54:HIS:NE2	3:B:72:SER:OG	2.35	0.41
1:R:141:LEU:HD23	2:A:351:CYS:SG	2.61	0.41
1:R:85:MET:N	1:R:85:MET:SD	2.94	0.40
2:A:49:ILE:HG13	2:A:50:VAL:N	2.36	0.40

There are no symmetry-related clashes.

## 5.3 Torsion angles [i](#)

### 5.3.1 Protein backbone [i](#)

In the following table, the Percentiles column shows the percent Ramachandran outliers of the chain as a percentile score with respect to all PDB entries followed by that with respect to all EM entries.

The Analysed column shows the number of residues for which the backbone conformation was analysed, and the total number of residues.

Mol	Chain	Analysed	Favoured	Allowed	Outliers	Percentiles	
1	R	225/520 (43%)	219 (97%)	6 (3%)	0	100	100
2	A	210/354 (59%)	207 (99%)	3 (1%)	0	100	100
3	B	335/357 (94%)	324 (97%)	11 (3%)	0	100	100
4	G	54/71 (76%)	53 (98%)	1 (2%)	0	100	100
5	S	229/259 (88%)	221 (96%)	8 (4%)	0	100	100
All	All	1053/1561 (68%)	1024 (97%)	29 (3%)	0	100	100

There are no Ramachandran outliers to report.

### 5.3.2 Protein sidechains [i](#)

In the following table, the Percentiles column shows the percent sidechain outliers of the chain as a percentile score with respect to all PDB entries followed by that with respect to all EM entries.

The Analysed column shows the number of residues for which the sidechain conformation was analysed, and the total number of residues.

Mol	Chain	Analysed	Rotameric	Outliers	Percentiles	
1	R	169/404 (42%)	168 (99%)	1 (1%)	84	93
2	A	185/305 (61%)	184 (100%)	1 (0%)	86	94
3	B	277/297 (93%)	277 (100%)	0	100	100
4	G	46/58 (79%)	46 (100%)	0	100	100
5	S	190/209 (91%)	190 (100%)	0	100	100
All	All	867/1273 (68%)	865 (100%)	2 (0%)	91	97

All (2) residues with a non-rotameric sidechain are listed below:

Mol	Chain	Res	Type
1	R	179	TRP
2	A	313	ARG

Sometimes sidechains can be flipped to improve hydrogen bonding and reduce clashes. All (3) such sidechains are listed below:

Mol	Chain	Res	Type
1	R	63	GLN
1	R	67	ASN
5	S	167	GLN

### 5.3.3 RNA [i](#)

There are no RNA molecules in this entry.

## 5.4 Non-standard residues in protein, DNA, RNA chains [i](#)

There are no non-standard protein/DNA/RNA residues in this entry.

## 5.5 Carbohydrates [i](#)

There are no oligosaccharides in this entry.

## 5.6 Ligand geometry [i](#)

There are no ligands in this entry.

## 5.7 Other polymers [i](#)

There are no such residues in this entry.

## 5.8 Polymer linkage issues [i](#)

There are no chain breaks in this entry.

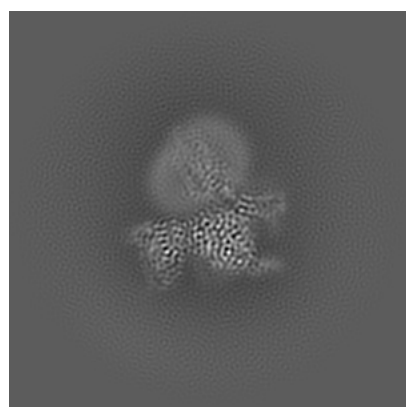
## 6 Map visualisation [i](#)

This section contains visualisations of the EMDB entry EMD-32904. These allow visual inspection of the internal detail of the map and identification of artifacts.

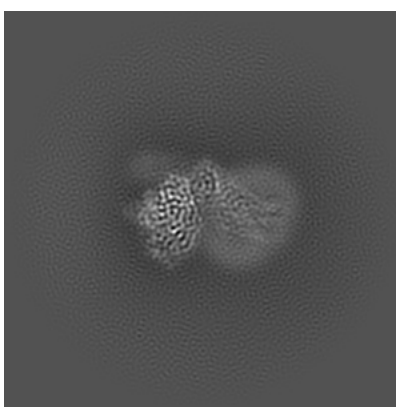
No raw map or half-maps were deposited for this entry and therefore no images, graphs, etc. pertaining to the raw map can be shown.

### 6.1 Orthogonal projections [i](#)

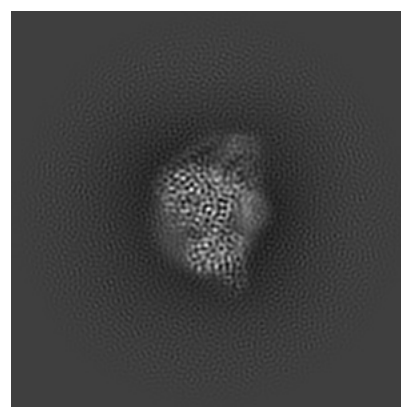
#### 6.1.1 Primary map



X



Y

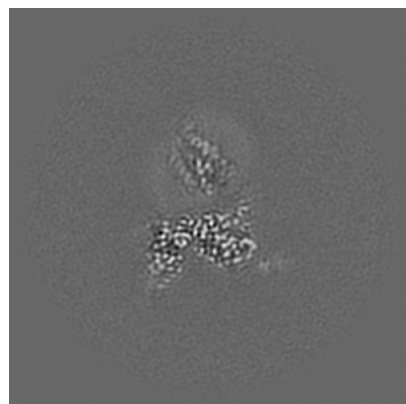


Z

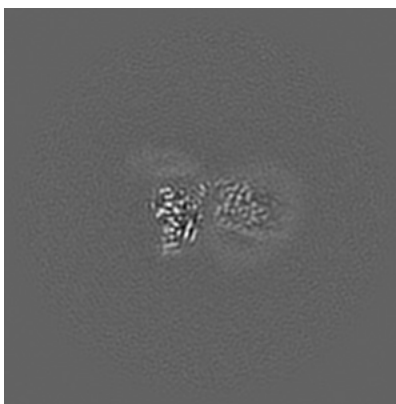
The images above show the map projected in three orthogonal directions.

### 6.2 Central slices [i](#)

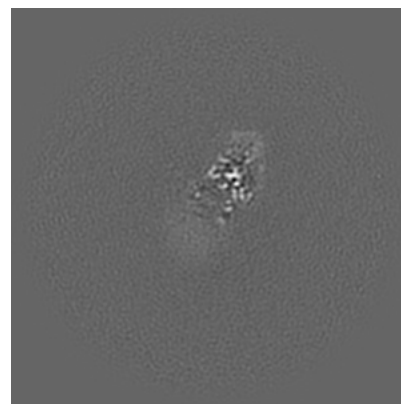
#### 6.2.1 Primary map



X Index: 160



Y Index: 160



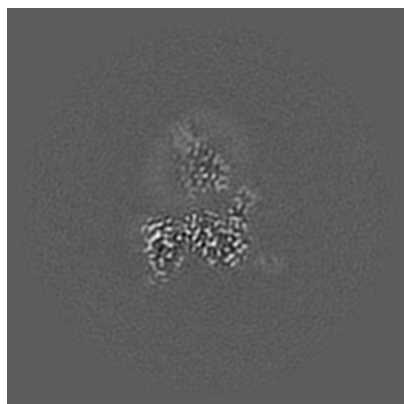
Z Index: 160



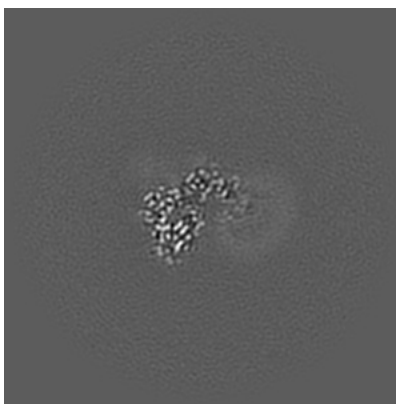
The images above show central slices of the map in three orthogonal directions.

## 6.3 Largest variance slices [i](#)

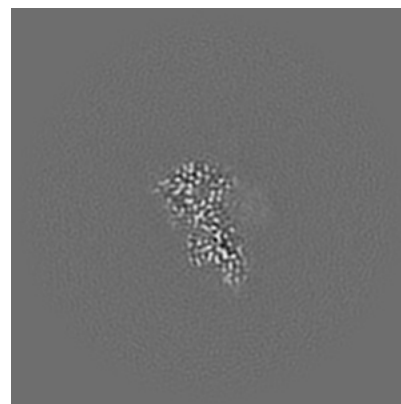
### 6.3.1 Primary map



X Index: 164



Y Index: 176

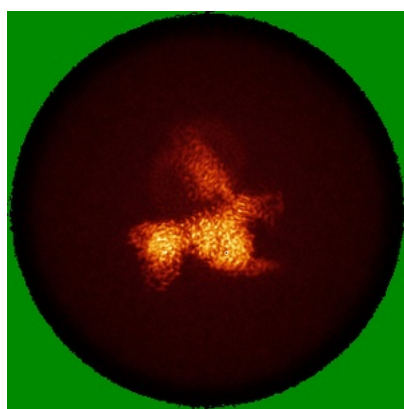


Z Index: 136

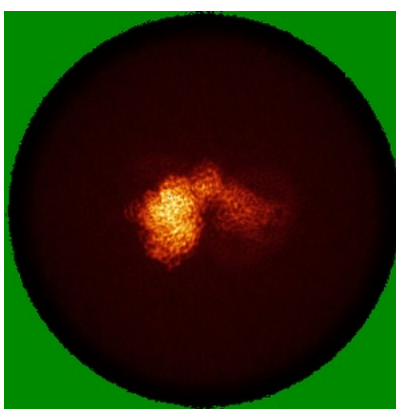
The images above show the largest variance slices of the map in three orthogonal directions.

## 6.4 Orthogonal standard-deviation projections (False-color) [i](#)

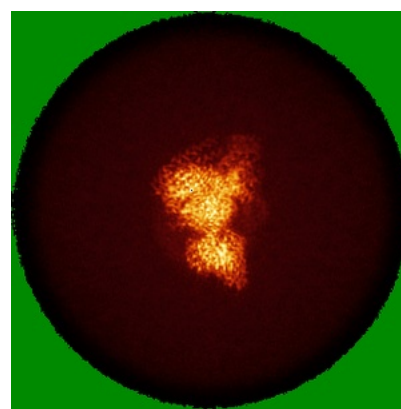
### 6.4.1 Primary map



X



Y



Z

The images above show the map standard deviation projections with false color in three orthogonal directions. Minimum values are shown in green, max in blue, and dark to light orange shades represent small to large values respectively.

## 6.5 Orthogonal surface views [i](#)

### 6.5.1 Primary map



X



Y



Z

The images above show the 3D surface view of the map at the recommended contour level 0.14. These images, in conjunction with the slice images, may facilitate assessment of whether an appropriate contour level has been provided.

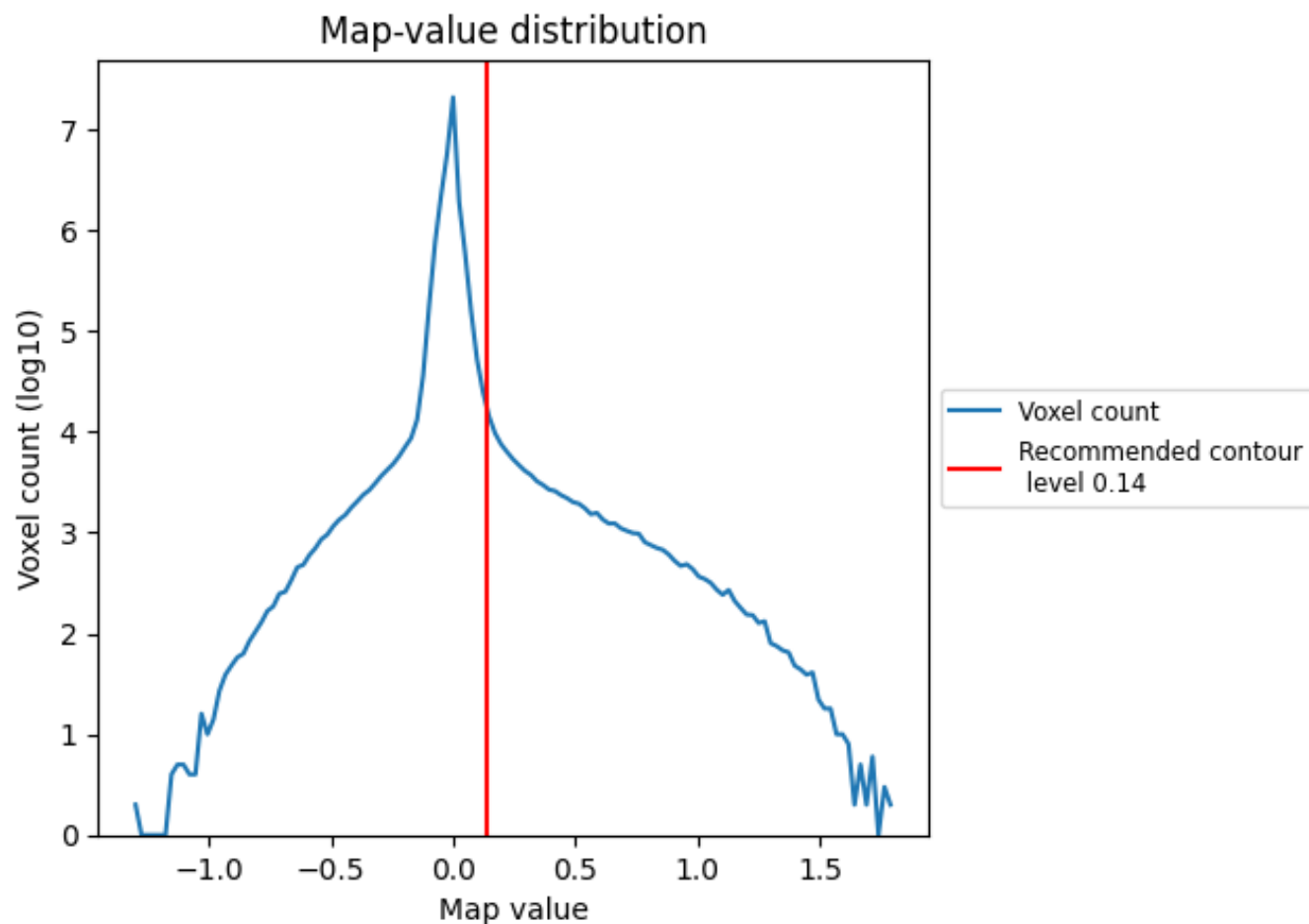
## 6.6 Mask visualisation [i](#)

This section was not generated. No masks/segmentation were deposited.

## 7 Map analysis [i](#)

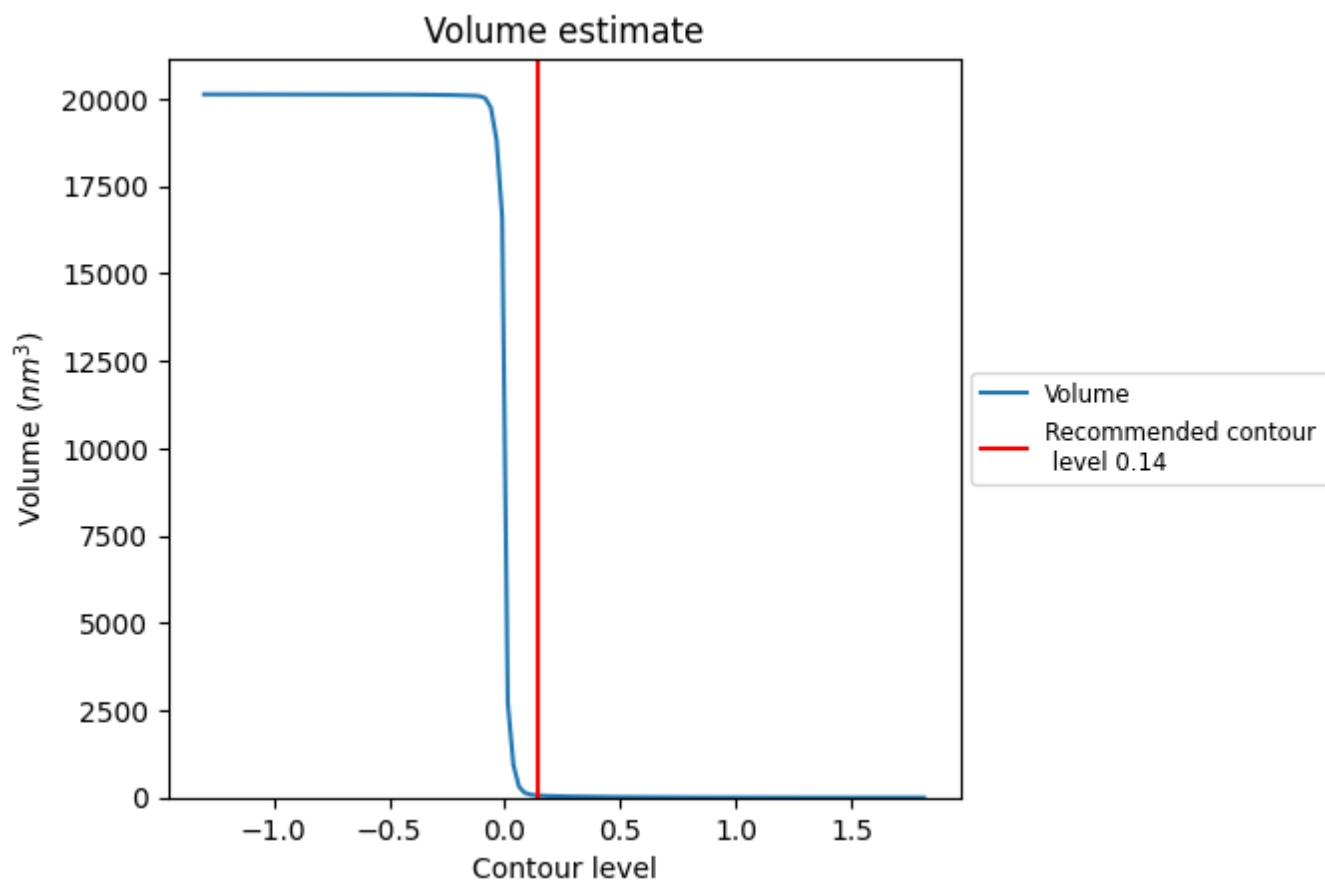
This section contains the results of statistical analysis of the map.

### 7.1 Map-value distribution [i](#)



The map-value distribution is plotted in 128 intervals along the x-axis. The y-axis is logarithmic. A spike in this graph at zero usually indicates that the volume has been masked.

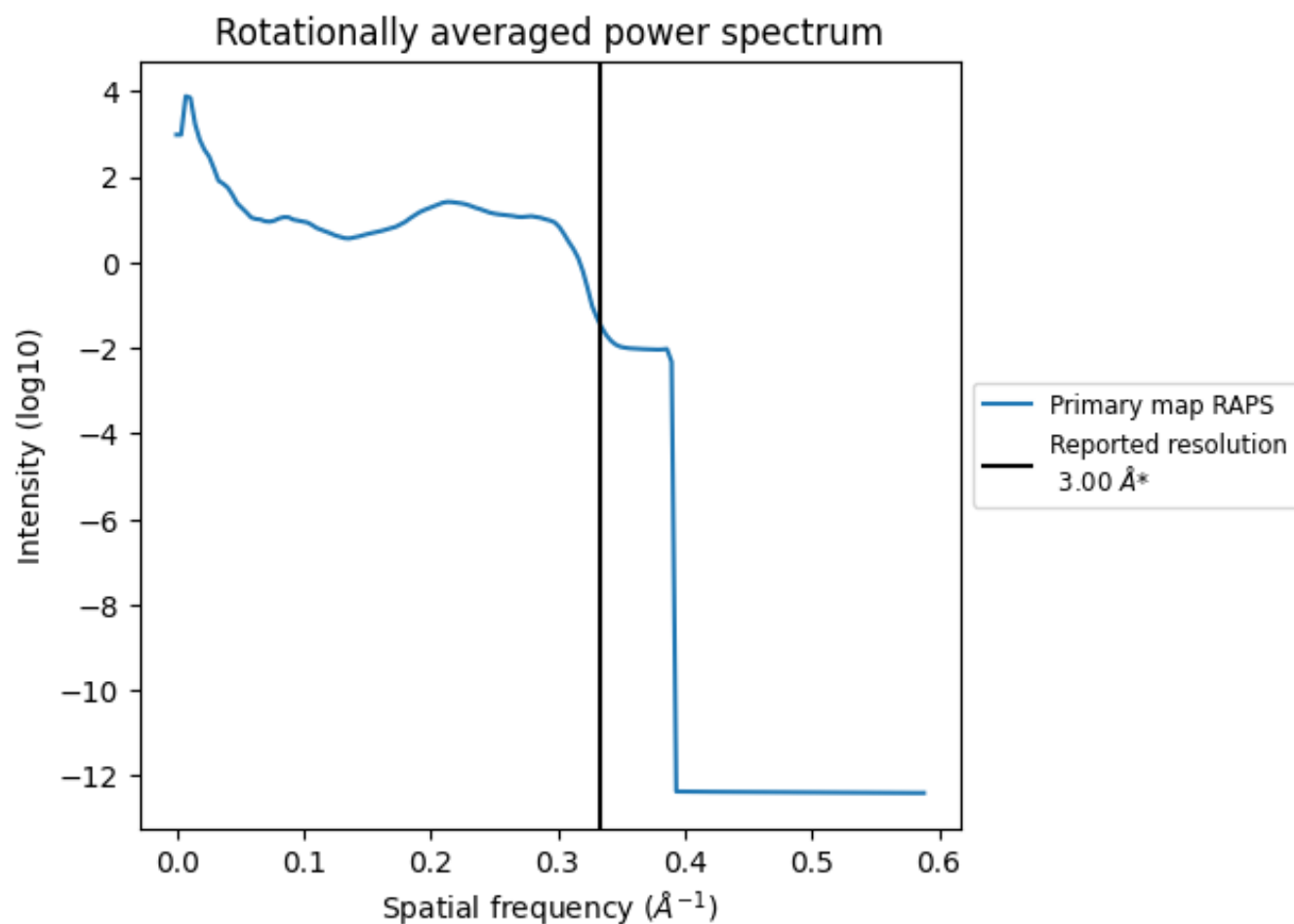
## 7.2 Volume estimate [i](#)



The volume at the recommended contour level is 63  $\text{nm}^3$ ; this corresponds to an approximate mass of 57 kDa.

The volume estimate graph shows how the enclosed volume varies with the contour level. The recommended contour level is shown as a vertical line and the intersection between the line and the curve gives the volume of the enclosed surface at the given level.

### 7.3 Rotationally averaged power spectrum ⓘ



\*Reported resolution corresponds to spatial frequency of 0.333 Å<sup>-1</sup>

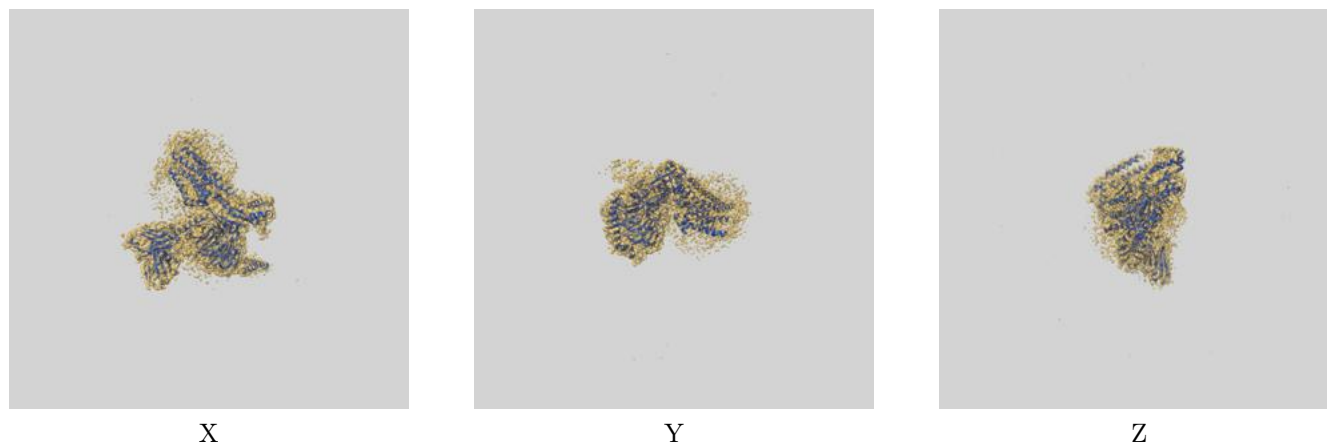
## 8 Fourier-Shell correlation ⓘ

This section was not generated. No FSC curve or half-maps provided.

## 9 Map-model fit [i](#)

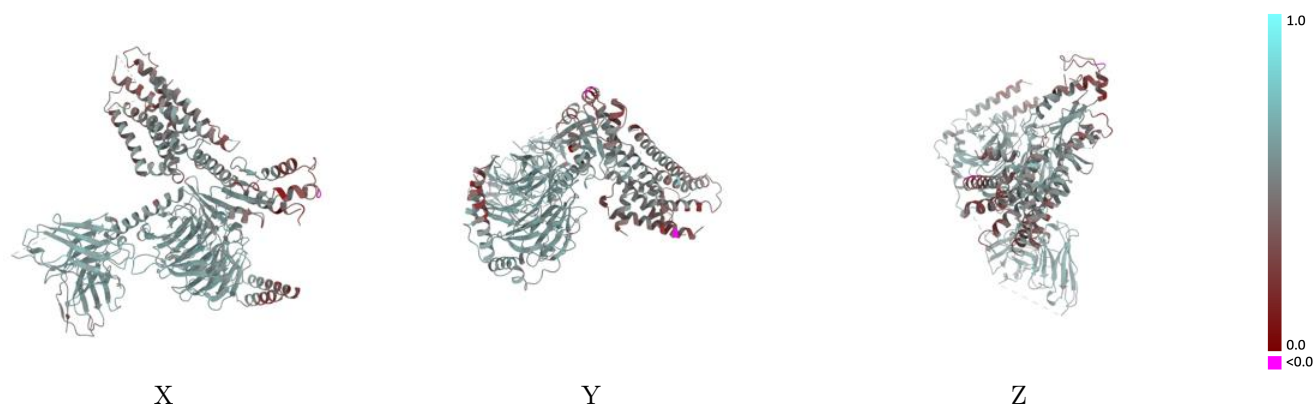
This section contains information regarding the fit between EMDB map EMD-32904 and PDB model 7WZ4. Per-residue inclusion information can be found in section [3](#) on page [8](#).

### 9.1 Map-model overlay [i](#)



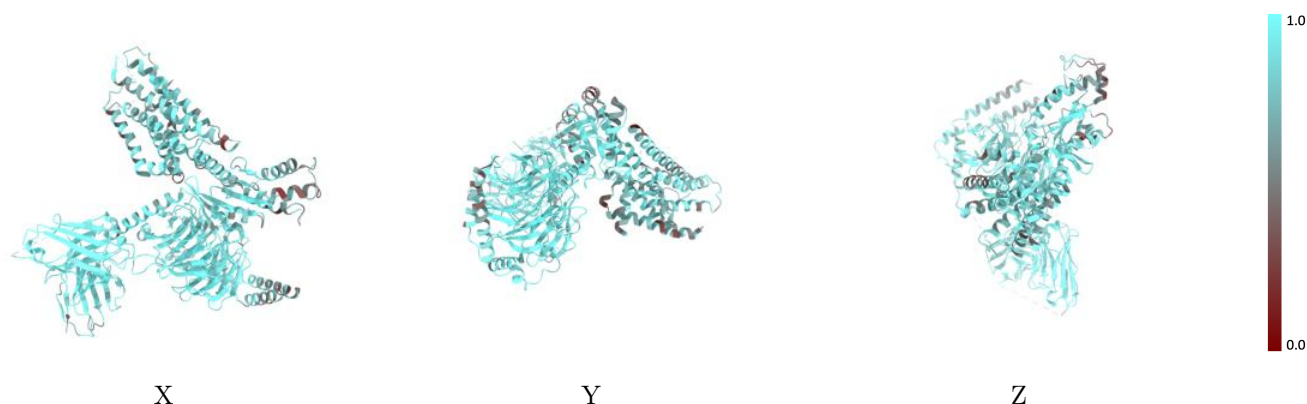
The images above show the 3D surface view of the map at the recommended contour level 0.14 at 50% transparency in yellow overlaid with a ribbon representation of the model coloured in blue. These images allow for the visual assessment of the quality of fit between the atomic model and the map.

## 9.2 Q-score mapped to coordinate model [i](#)



The images above show the model with each residue coloured according to its Q-score. This shows their resolvability in the map with higher Q-score values reflecting better resolvability. Please note: Q-score is calculating the resolvability of atoms, and thus high values are only expected at resolutions at which atoms can be resolved. Low Q-score values may therefore be expected for many entries.

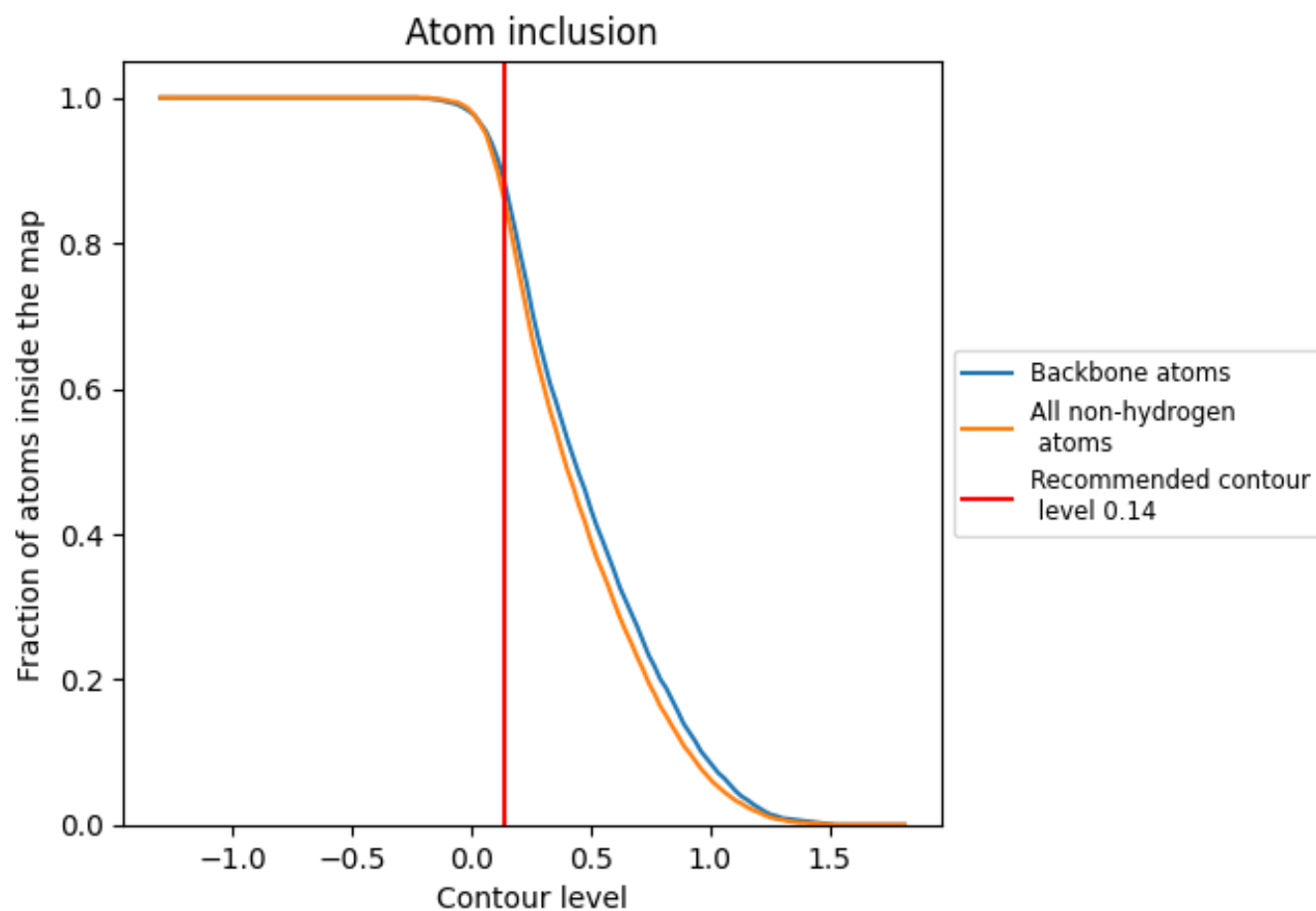
## 9.3 Atom inclusion mapped to coordinate model [i](#)



The images above show the model with each residue coloured according to its atom inclusion. This shows to what extent they are inside the map at the recommended contour level (0.14).



## 9.4 Atom inclusion [i](#)



At the recommended contour level, 88% of all backbone atoms, 86% of all non-hydrogen atoms, are inside the map.

9.5 Map-model fit summary ⓘ

The table lists the average atom inclusion at the recommended contour level (0.14) and Q-score for the entire model and for each chain.

Chain	Atom inclusion	Q-score
All	<div></div> 0.8580	<div></div> 0.5230
A	<div></div> 0.7990	<div></div> 0.4890
B	<div></div> 0.9290	<div></div> 0.5710
G	<div></div> 0.7850	<div></div> 0.4800
R	<div></div> 0.7580	<div></div> 0.4450
S	<div></div> 0.9240	<div></div> 0.5690

