



Full wwPDB X-ray Structure Validation Report ⓘ

Oct 8, 2024 – 09:11 AM EDT

PDB ID : 3O53
Title : Crystal Structure of LRIM1 leucine-rich repeat domain
Authors : Baxter, R.H.G.; Steinert, S.; Chelliah, Y.; Volohonsky, G.; Levashina, E.A.;
Deisenhofer, J.
Deposited on : 2010-07-27
Resolution : 2.00 Å(reported)

This is a Full wwPDB X-ray Structure Validation Report for a publicly released PDB entry.

We welcome your comments at validation@mail.wwpdb.org

A user guide is available at

<https://www.wwpdb.org/validation/2017/XrayValidationReportHelp>

with specific help available everywhere you see the ⓘ symbol.

The types of validation reports are described at

<http://www.wwpdb.org/validation/2017/FAQs#types>.

The following versions of software and data (see [references ⓘ](#)) were used in the production of this report:

MolProbity : 4.02b-467
Mogul : 2022.3.0, CSD as543be (2022)
Xtriage (Phenix) : 1.20.1
EDS : 3.0
Percentile statistics : 20231227.v01 (using entries in the PDB archive December 27th 2023)
CCP4 : 9.0.003 (Gargrove)
Density-Fitness : 1.0.11
Ideal geometry (proteins) : Engh & Huber (2001)
Ideal geometry (DNA, RNA) : Parkinson et al. (1996)
Validation Pipeline (wwPDB-VP) : 2.39

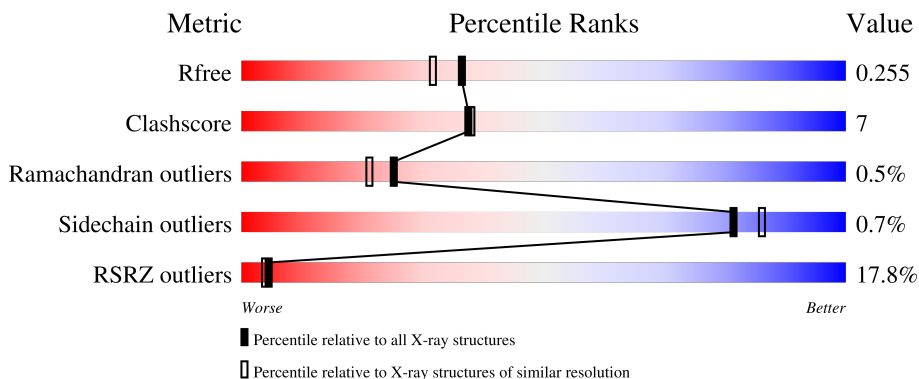
1 Overall quality at a glance

The following experimental techniques were used to determine the structure:

X-RAY DIFFRACTION

The reported resolution of this entry is 2.00 Å.

Percentile scores (ranging between 0-100) for global validation metrics of the entry are shown in the following graphic. The table shows the number of entries on which the scores are based.



Metric	Whole archive (#Entries)	Similar resolution (#Entries, resolution range(Å))
R_{free}	164625	9409 (2.00-2.00)
Clashscore	180529	10737 (2.00-2.00)
Ramachandran outliers	177936	10628 (2.00-2.00)
Sidechain outliers	177891	10627 (2.00-2.00)
RSRZ outliers	164620	9409 (2.00-2.00)

The table below summarises the geometric issues observed across the polymeric chains and their fit to the electron density. The red, orange, yellow and green segments of the lower bar indicate the fraction of residues that contain outliers for ≥ 3 , 2, 1 and 0 types of geometric quality criteria respectively. A grey segment represents the fraction of residues that are not modelled. The numeric value for each fraction is indicated below the corresponding segment, with a dot representing fractions $\leq 5\%$. The upper red bar (where present) indicates the fraction of residues that have poor fit to the electron density. The numeric value is given above the bar.

Mol	Chain	Length	Quality of chain
1	A	317	<div> <div>12%</div> <div>88%</div> <div>11%</div> </div>
1	B	317	<div> <div>24%</div> <div>85%</div> <div>15%</div> </div>
2	C	2	<div> <div>100%</div> </div>

2 Entry composition

There are 5 unique types of molecules in this entry. The entry contains 5562 atoms, of which 0 are hydrogens and 0 are deuteriums.

In the tables below, the ZeroOcc column contains the number of atoms modelled with zero occupancy, the AltConf column contains the number of residues with at least one atom in alternate conformation and the Trace column contains the number of residues modelled with at most 2 atoms.

- Molecule 1 is a protein called Protein LRIM1.

Mol	Chain	Residues	Atoms					ZeroOcc	AltConf	Trace
1	A	316	Total	C	N	O	S	0	1	0
			2511	1577	447	479	8			
1	B	314	Total	C	N	O	S	0	2	0
			2502	1570	444	480	8			

There are 14 discrepancies between the modelled and reference sequences:

Chain	Residue	Modelled	Actual	Comment	Reference
A	333	GLY	-	expression tag	UNP Q7Q5N3
A	334	HIS	-	expression tag	UNP Q7Q5N3
A	335	HIS	-	expression tag	UNP Q7Q5N3
A	336	HIS	-	expression tag	UNP Q7Q5N3
A	337	HIS	-	expression tag	UNP Q7Q5N3
A	338	HIS	-	expression tag	UNP Q7Q5N3
A	339	HIS	-	expression tag	UNP Q7Q5N3
B	333	GLY	-	expression tag	UNP Q7Q5N3
B	334	HIS	-	expression tag	UNP Q7Q5N3
B	335	HIS	-	expression tag	UNP Q7Q5N3
B	336	HIS	-	expression tag	UNP Q7Q5N3
B	337	HIS	-	expression tag	UNP Q7Q5N3
B	338	HIS	-	expression tag	UNP Q7Q5N3
B	339	HIS	-	expression tag	UNP Q7Q5N3

- Molecule 2 is an oligosaccharide called 2-acetamido-2-deoxy-beta-D-glucopyranose-(1-4)-2-acetamido-2-deoxy-beta-D-glucopyranose.

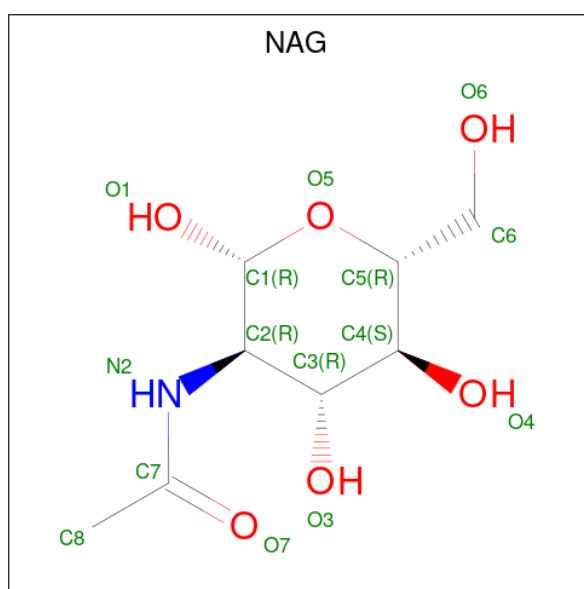


Mol	Chain	Residues	Atoms				ZeroOcc	AltConf	Trace
2	C	2	Total	C	N	O	0	0	0
			28	16	2	10			

- Molecule 3 is COBALT (II) ION (three-letter code: CO) (formula: Co).

Mol	Chain	Residues	Atoms		ZeroOcc	AltConf
3	A	2	Total	Co	0	0
			2	2		

- Molecule 4 is 2-acetamido-2-deoxy-beta-D-glucopyranose (three-letter code: NAG) (formula: C₈H₁₅NO₆).



Mol	Chain	Residues	Atoms				ZeroOcc	AltConf
4	B	1	Total	C	N	O	0	0
			14	8	1	5		
4	B	1	Total	C	N	O	0	0
			14	8	1	5		

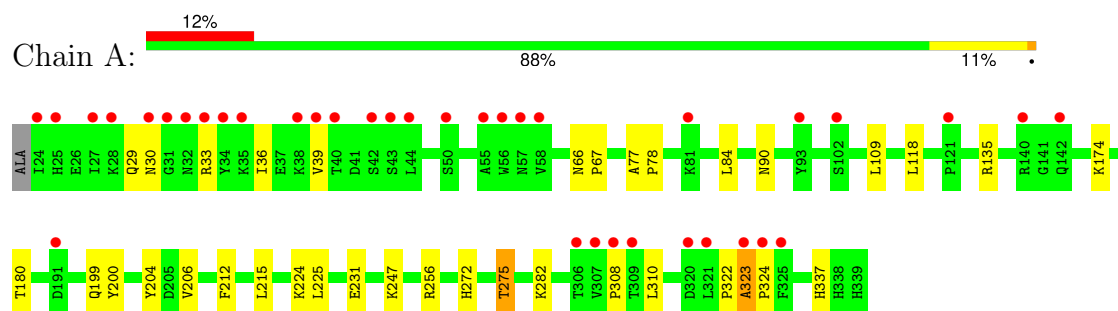
- Molecule 5 is water.

Mol	Chain	Residues	Atoms		ZeroOcc	AltConf
5	A	249	Total	O	0	0
			249	249		
5	B	242	Total	O	0	0
			242	242		

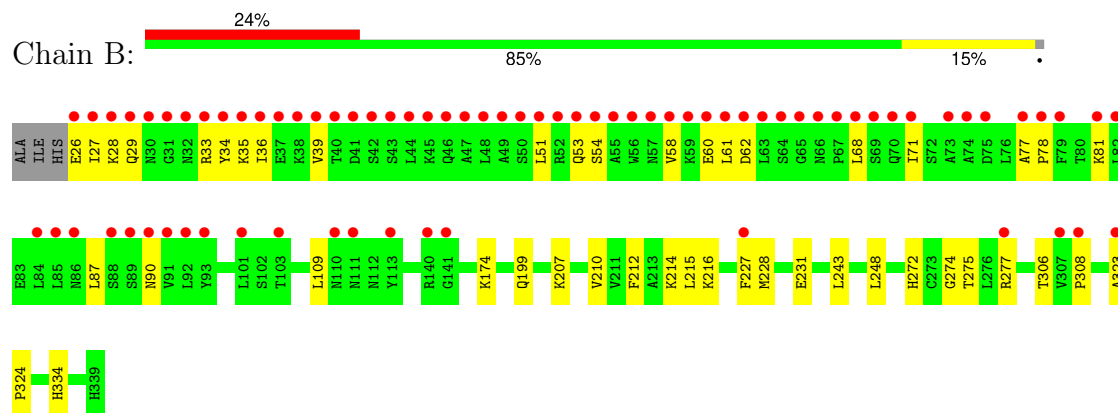
3 Residue-property plots

These plots are drawn for all protein, RNA, DNA and oligosaccharide chains in the entry. The first graphic for a chain summarises the proportions of the various outlier classes displayed in the second graphic. The second graphic shows the sequence view annotated by issues in geometry and electron density. Residues are color-coded according to the number of geometric quality criteria for which they contain at least one outlier: green = 0, yellow = 1, orange = 2 and red = 3 or more. A red dot above a residue indicates a poor fit to the electron density ($RSRZ > 2$). Stretches of 2 or more consecutive residues without any outlier are shown as a green connector. Residues present in the sample, but not in the model, are shown in grey.

• Molecule 1: Protein LRIM1



• Molecule 1: Protein LRIM1



• Molecule 2: 2-acetamido-2-deoxy-beta-D-glucopyranose-(1-4)-2-acetamido-2-deoxy-beta-D-glucopyranose



4 Data and refinement statistics

Property	Value	Source
Space group	P 41 21 2	Depositor
Cell constants a, b, c, α , β , γ	79.27Å 79.27Å 238.64Å 90.00° 90.00° 90.00°	Depositor
Resolution (Å)	47.67 – 2.00 47.67 – 2.00	Depositor EDS
% Data completeness (in resolution range)	99.5 (47.67-2.00) 99.5 (47.67-2.00)	Depositor EDS
R_{merge}	0.07	Depositor
R_{sym}	(Not available)	Depositor
$\langle I/\sigma(I) \rangle$ ¹	2.34 (at 2.00Å)	Xtriage
Refinement program	PHENIX	Depositor
R, R_{free}	0.189 , 0.233 0.220 , 0.255	Depositor DCC
R_{free} test set	2663 reflections (5.09%)	wwPDB-VP
Wilson B-factor (Å ²)	33.8	Xtriage
Anisotropy	0.054	Xtriage
Bulk solvent k_{sol} (e/Å ³), B_{sol} (Å ²)	0.33 , 49.0	EDS
L-test for twinning ²	$\langle L \rangle = 0.49$, $\langle L^2 \rangle = 0.33$	Xtriage
Estimated twinning fraction	No twinning to report.	Xtriage
F_o, F_c correlation	0.95	EDS
Total number of atoms	5562	wwPDB-VP
Average B, all atoms (Å ²)	49.0	wwPDB-VP

Xtriage's analysis on translational NCS is as follows: *The largest off-origin peak in the Patterson function is 4.24% of the height of the origin peak. No significant pseudotranslation is detected.*

¹Intensities estimated from amplitudes.

²Theoretical values of $\langle |L| \rangle$, $\langle L^2 \rangle$ for acentric reflections are 0.5, 0.333 respectively for untwinned datasets, and 0.375, 0.2 for perfectly twinned datasets.

5 Model quality

5.1 Standard geometry

Bond lengths and bond angles in the following residue types are not validated in this section: CO, NAG

The Z score for a bond length (or angle) is the number of standard deviations the observed value is removed from the expected value. A bond length (or angle) with $|Z| > 5$ is considered an outlier worth inspection. RMSZ is the root-mean-square of all Z scores of the bond lengths (or angles).

Mol	Chain	Bond lengths		Bond angles	
		RMSZ	# Z >5	RMSZ	# Z >5
1	A	0.32	0/2554	0.48	0/3452
1	B	0.33	0/2544	0.48	0/3438
All	All	0.32	0/5098	0.48	0/6890

There are no bond length outliers.

There are no bond angle outliers.

There are no chirality outliers.

There are no planarity outliers.

5.2 Too-close contacts

In the following table, the Non-H and H(model) columns list the number of non-hydrogen atoms and hydrogen atoms in the chain respectively. The H(added) column lists the number of hydrogen atoms added and optimized by MolProbity. The Clashes column lists the number of clashes within the asymmetric unit, whereas Symm-Clashes lists symmetry-related clashes.

Mol	Chain	Non-H	H(model)	H(added)	Clashes	Symm-Clashes
1	A	2511	0	2500	26	0
1	B	2502	0	2486	44	0
2	C	28	0	25	0	0
3	A	2	0	0	0	0
4	B	28	0	26	0	0
5	A	249	0	0	2	1
5	B	242	0	0	8	1
All	All	5562	0	5037	70	1

The all-atom clashscore is defined as the number of clashes found per 1000 atoms (including hydrogen atoms). The all-atom clashscore for this structure is 7.

All (70) close contacts within the same asymmetric unit are listed below, sorted by their clash magnitude.

Atom-1	Atom-2	Interatomic distance (Å)	Clash overlap (Å)
1:A:323:ALA:HB1	1:A:324:PRO:CD	2.11	0.80
1:A:323:ALA:HB1	1:A:324:PRO:HD3	1.73	0.69
1:B:228:MET:SD	5:B:466:HOH:O	2.51	0.69
1:B:36:ILE:HG22	1:B:39:VAL:HG13	1.76	0.65
1:B:210:VAL:HG21	1:B:212:PHE:CZ	2.33	0.64
1:B:207:LYS:HA	1:B:231[A]:GLU:HG2	1.78	0.64
1:A:323:ALA:CB	1:A:324:PRO:CD	2.74	0.64
1:B:68:LEU:HA	5:B:434:HOH:O	1.98	0.64
1:B:35[A]:LYS:HG3	1:B:62:ASP:HB3	1.83	0.59
1:B:81:LYS:HG2	5:B:456:HOH:O	2.06	0.54
1:A:256:ARG:NH2	1:A:282:LYS:HD3	2.22	0.54
1:A:77:ALA:N	1:A:78:PRO:HD2	2.22	0.54
1:B:214:LYS:O	1:B:216:LYS:HD2	2.08	0.53
1:A:29:GLN:HG2	1:A:30:ASN:N	2.23	0.53
1:B:306:THR:O	1:B:308:PRO:HD3	2.09	0.53
1:B:272:HIS:O	1:B:275:THR:HG22	2.09	0.52
1:A:66:ASN:HB3	1:A:67:PRO:HD2	1.92	0.51
1:B:207:LYS:CA	1:B:231[A]:GLU:HG2	2.40	0.51
1:B:26:GLU:HG2	1:B:28:LYS:HE2	1.92	0.51
1:B:29:GLN:N	5:B:481:HOH:O	2.43	0.51
1:B:34:TYR:C	1:B:35[A]:LYS:HD3	2.32	0.50
1:B:62:ASP:C	5:B:487:HOH:O	2.50	0.50
1:B:77:ALA:N	1:B:78:PRO:CD	2.75	0.49
1:A:206:VAL:HG23	1:A:225:LEU:HD21	1.94	0.49
1:A:272:HIS:O	1:A:275:THR:HG22	2.13	0.48
1:B:228:MET:HE2	1:B:243:LEU:HD22	1.95	0.48
1:B:53:GLN:HG3	1:B:54:SER:N	2.28	0.48
1:B:227:PHE:CD2	1:B:334:HIS:CG	3.02	0.48
1:B:28:LYS:C	5:B:481:HOH:O	2.51	0.48
1:A:135:ARG:NH2	5:A:467:HOH:O	2.47	0.48
1:B:29:GLN:HG2	1:B:34:TYR:CE1	2.49	0.47
1:B:71:ILE:HD11	1:B:87:LEU:HD22	1.97	0.47
1:B:210:VAL:CG2	1:B:212:PHE:CZ	2.98	0.47
1:B:33:ARG:HG2	1:B:60:GLU:HB2	1.96	0.47
1:B:61:LEU:HG	5:B:487:HOH:O	2.14	0.46
1:A:66:ASN:O	1:A:90:ASN:HA	2.15	0.46
1:A:206:VAL:HG12	1:A:231:GLU:HG3	1.97	0.46
1:B:323:ALA:HB3	1:B:324:PRO:HD3	1.97	0.45
1:B:212:PHE:HB3	1:B:215:LEU:HB2	1.97	0.45
1:A:118:LEU:HD12	1:A:118:LEU:N	2.32	0.45

Continued on next page...

Continued from previous page...

Atom-1	Atom-2	Interatomic distance (Å)	Clash overlap (Å)
1:A:36:ILE:HG22	1:A:39:VAL:HG13	1.98	0.45
1:B:210:VAL:CG2	1:B:212:PHE:CE2	3.00	0.44
1:A:199:GLN:HG3	1:A:200:TYR:CD2	2.51	0.44
1:B:27:ILE:HG21	1:B:51:LEU:HD21	1.98	0.44
1:A:36:ILE:HG22	1:A:39:VAL:CG1	2.47	0.44
1:A:323:ALA:HB1	1:A:324:PRO:HD2	1.98	0.44
1:B:62:ASP:N	5:B:487:HOH:O	2.50	0.43
1:B:27:ILE:HD12	1:B:27:ILE:N	2.34	0.43
1:B:71:ILE:CD1	1:B:87:LEU:HD22	2.48	0.43
1:A:174:LYS:HB2	1:A:199:GLN:HG2	2.01	0.43
1:B:274:GLY:HA2	1:B:277:ARG:NH1	2.34	0.43
1:B:35[B]:LYS:HG2	1:B:62:ASP:HB3	2.01	0.42
1:B:228:MET:CE	1:B:248:LEU:HD13	2.49	0.42
1:B:68:LEU:HB2	1:B:90:ASN:OD1	2.20	0.42
1:A:84:LEU:HD23	1:A:84:LEU:C	2.40	0.42
1:A:30:ASN:O	1:A:33:ARG:HG2	2.19	0.42
1:A:212:PHE:HB3	1:A:215:LEU:HB2	2.02	0.41
1:A:180:THR:HG22	1:A:204:TYR:CE2	2.55	0.41
1:B:36:ILE:CG2	1:B:39:VAL:CG1	2.99	0.41
1:B:26:GLU:HG2	1:B:28:LYS:CE	2.50	0.41
1:B:174:LYS:HB2	1:B:199:GLN:HG2	2.02	0.41
1:B:227:PHE:CE2	1:B:334:HIS:CD2	3.09	0.41
1:B:323:ALA:N	1:B:324:PRO:CD	2.83	0.41
1:A:308:PRO:C	1:A:310:LEU:H	2.24	0.41
1:B:29:GLN:HG2	1:B:34:TYR:CD1	2.55	0.41
1:B:35[A]:LYS:HA	1:B:62:ASP:O	2.21	0.41
1:A:224[A]:LYS:HB3	1:A:247:LYS:HE2	2.02	0.41
1:A:135:ARG:NH2	5:A:363:HOH:O	2.53	0.40
1:B:34:TYR:CE1	1:B:51:LEU:HD22	2.56	0.40
1:A:77:ALA:N	1:A:78:PRO:CD	2.85	0.40

All (1) symmetry-related close contacts are listed below. The label for Atom-2 includes the symmetry operator and encoded unit-cell translations to be applied.

Atom-1	Atom-2	Interatomic distance (Å)	Clash overlap (Å)
5:A:576:HOH:O	5:B:366:HOH:O[5_545]	2.14	0.06

5.3 Torsion angles

5.3.1 Protein backbone

In the following table, the Percentiles column shows the percent Ramachandran outliers of the chain as a percentile score with respect to all X-ray entries followed by that with respect to entries of similar resolution.

The Analysed column shows the number of residues for which the backbone conformation was analysed, and the total number of residues.

Mol	Chain	Analysed	Favoured	Allowed	Outliers	Percentiles	
1	A	315/317 (99%)	294 (93%)	19 (6%)	2 (1%)	22	17
1	B	314/317 (99%)	286 (91%)	27 (9%)	1 (0%)	37	35
All	All	629/634 (99%)	580 (92%)	46 (7%)	3 (0%)	25	21

All (3) Ramachandran outliers are listed below:

Mol	Chain	Res	Type
1	A	323	ALA
1	A	322	PRO
1	B	58	VAL

5.3.2 Protein sidechains

In the following table, the Percentiles column shows the percent sidechain outliers of the chain as a percentile score with respect to all X-ray entries followed by that with respect to entries of similar resolution.

The Analysed column shows the number of residues for which the sidechain conformation was analysed, and the total number of residues.

Mol	Chain	Analysed	Rotameric	Outliers	Percentiles	
1	A	279/278 (100%)	276 (99%)	3 (1%)	70	76
1	B	278/278 (100%)	277 (100%)	1 (0%)	89	92
All	All	557/556 (100%)	553 (99%)	4 (1%)	81	86

All (4) residues with a non-rotameric sidechain are listed below:

Mol	Chain	Res	Type
1	A	109	LEU
1	A	275	THR
1	A	337	HIS

Continued on next page...

Continued from previous page...

Mol	Chain	Res	Type
1	B	109	LEU

Sometimes sidechains can be flipped to improve hydrogen bonding and reduce clashes. All (3) such sidechains are listed below:

Mol	Chain	Res	Type
1	A	337	HIS
1	B	29	GLN
1	B	334	HIS

5.3.3 RNA ⓘ

There are no RNA molecules in this entry.

5.4 Non-standard residues in protein, DNA, RNA chains ⓘ

There are no non-standard protein/DNA/RNA residues in this entry.

5.5 Carbohydrates ⓘ

2 monosaccharides are modelled in this entry.

In the following table, the Counts columns list the number of bonds (or angles) for which Mogul statistics could be retrieved, the number of bonds (or angles) that are observed in the model and the number of bonds (or angles) that are defined in the Chemical Component Dictionary. The Link column lists molecule types, if any, to which the group is linked. The Z score for a bond length (or angle) is the number of standard deviations the observed value is removed from the expected value. A bond length (or angle) with $|Z| > 2$ is considered an outlier worth inspection. RMSZ is the root-mean-square of all Z scores of the bond lengths (or angles).

Mol	Type	Chain	Res	Link	Bond lengths			Bond angles		
					Counts	RMSZ	$\# Z > 2$	Counts	RMSZ	$\# Z > 2$
2	NAG	C	1	2,1	14,14,15	0.65	0	17,19,21	0.82	0
2	NAG	C	2	2	14,14,15	0.56	0	17,19,21	0.75	0

In the following table, the Chirals column lists the number of chiral outliers, the number of chiral centers analysed, the number of these observed in the model and the number defined in the Chemical Component Dictionary. Similar counts are reported in the Torsion and Rings columns. '-' means no outliers of that kind were identified.

Mol	Type	Chain	Res	Link	Chirals	Torsions	Rings
2	NAG	C	1	2,1	-	0/6/23/26	0/1/1/1
2	NAG	C	2	2	-	2/6/23/26	0/1/1/1

There are no bond length outliers.

There are no bond angle outliers.

There are no chirality outliers.

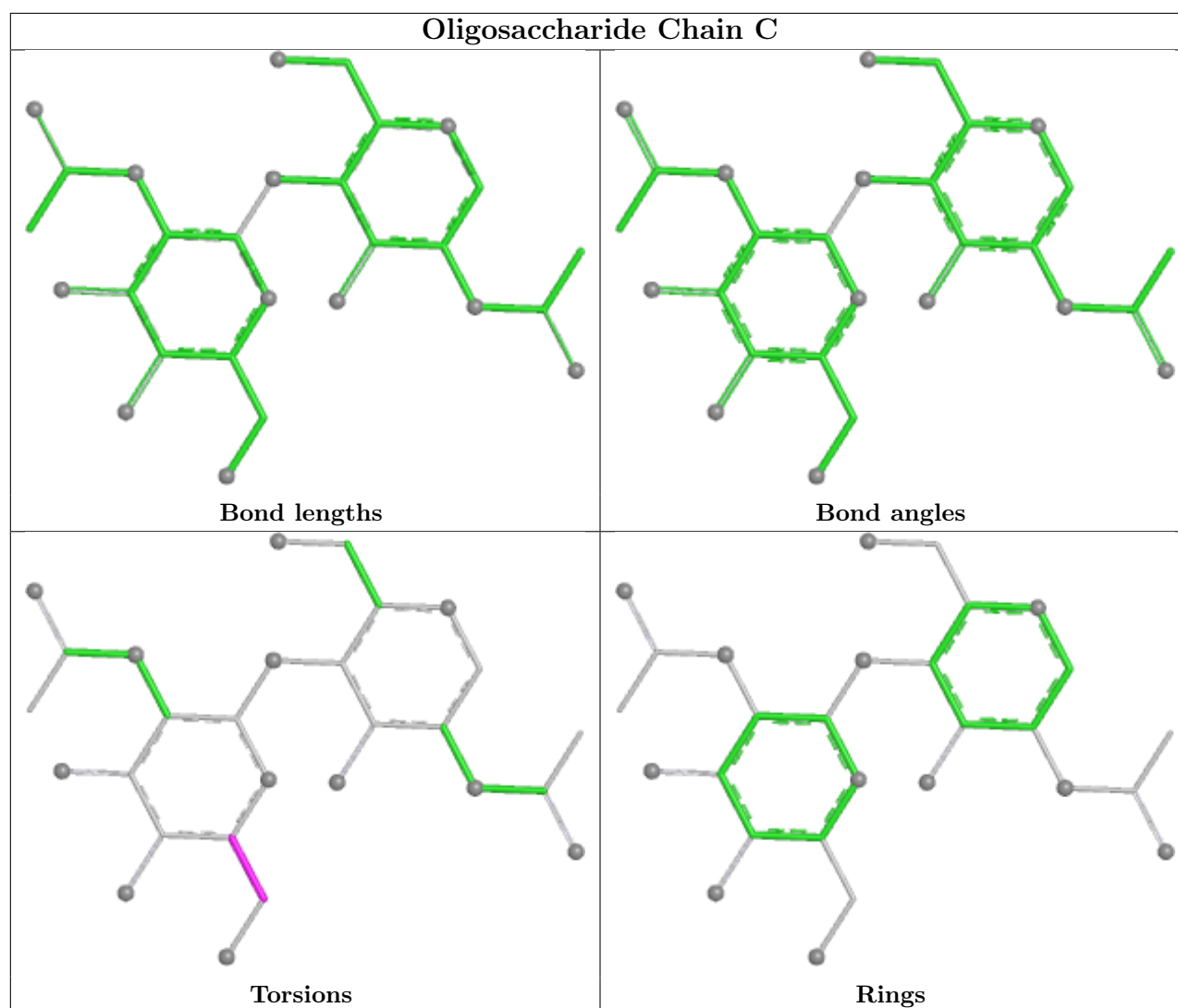
All (2) torsion outliers are listed below:

Mol	Chain	Res	Type	Atoms
2	C	2	NAG	C4-C5-C6-O6
2	C	2	NAG	O5-C5-C6-O6

There are no ring outliers.

No monomer is involved in short contacts.

The following is a two-dimensional graphical depiction of Mogul quality analysis of bond lengths, bond angles, torsion angles, and ring geometry for oligosaccharide.



5.6 Ligand geometry [i](#)

Of 4 ligands modelled in this entry, 2 are monoatomic - leaving 2 for Mogul analysis.

In the following table, the Counts columns list the number of bonds (or angles) for which Mogul statistics could be retrieved, the number of bonds (or angles) that are observed in the model and the number of bonds (or angles) that are defined in the Chemical Component Dictionary. The Link column lists molecule types, if any, to which the group is linked. The Z score for a bond length (or angle) is the number of standard deviations the observed value is removed from the expected value. A bond length (or angle) with $|Z| > 2$ is considered an outlier worth inspection. RMSZ is the root-mean-square of all Z scores of the bond lengths (or angles).

Mol	Type	Chain	Res	Link	Bond lengths			Bond angles		
					Counts	RMSZ	$\# Z > 2$	Counts	RMSZ	$\# Z > 2$
4	NAG	B	1004	1	14,14,15	0.43	0	17,19,21	1.14	2 (11%)
4	NAG	B	1005	1	14,14,15	0.63	0	17,19,21	1.00	2 (11%)

In the following table, the Chirals column lists the number of chiral outliers, the number of chiral centers analysed, the number of these observed in the model and the number defined in the Chemical Component Dictionary. Similar counts are reported in the Torsion and Rings columns. '-' means no outliers of that kind were identified.

Mol	Type	Chain	Res	Link	Chirals	Torsions	Rings
4	NAG	B	1004	1	-	1/6/23/26	0/1/1/1
4	NAG	B	1005	1	-	0/6/23/26	0/1/1/1

There are no bond length outliers.

All (4) bond angle outliers are listed below:

Mol	Chain	Res	Type	Atoms	Z	Observed(°)	Ideal(°)
4	B	1004	NAG	C1-O5-C5	2.70	115.80	112.19
4	B	1005	NAG	C1-O5-C5	2.13	115.04	112.19
4	B	1004	NAG	O5-C5-C6	2.10	111.76	107.66
4	B	1005	NAG	O5-C1-C2	2.08	114.51	111.29

There are no chirality outliers.

All (1) torsion outliers are listed below:

Mol	Chain	Res	Type	Atoms
4	B	1004	NAG	O5-C5-C6-O6

There are no ring outliers.

No monomer is involved in short contacts.

5.7 Other polymers [i](#)

There are no such residues in this entry.

5.8 Polymer linkage issues [i](#)

There are no chain breaks in this entry.

6 Fit of model and data

6.1 Protein, DNA and RNA chains

In the following table, the column labelled ‘#RSRZ > 2’ contains the number (and percentage) of RSRZ outliers, followed by percent RSRZ outliers for the chain as percentile scores relative to all X-ray entries and entries of similar resolution. The OWAB column contains the minimum, median, 95th percentile and maximum values of the occupancy-weighted average B-factor per residue. The column labelled ‘Q < 0.9’ lists the number of (and percentage) of residues with an average occupancy less than 0.9.

Mol	Chain	Analysed	<RSRZ>	#RSRZ>2		OWAB(Å ²)	Q<0.9
1	A	316/317 (99%)	0.58	37 (11%)	10 9	15, 40, 86, 124	1 (0%)
1	B	314/317 (99%)	1.11	75 (23%)	2 2	17, 43, 109, 236	2 (0%)
All	All	630/634 (99%)	0.84	112 (17%)	4 4	15, 42, 100, 236	3 (0%)

All (112) RSRZ outliers are listed below:

Mol	Chain	Res	Type	RSRZ
1	B	34	TYR	7.5
1	B	58	VAL	7.4
1	B	29	GLN	7.1
1	B	68	LEU	7.0
1	B	36	ILE	6.8
1	B	35[A]	LYS	6.7
1	B	67	PRO	6.3
1	B	39	VAL	6.0
1	B	27	ILE	6.0
1	A	323	ALA	5.7
1	B	47	ALA	5.7
1	B	56	TRP	5.6
1	B	88	SER	5.1
1	B	40	THR	4.9
1	B	38	LYS	4.9
1	B	51	LEU	4.9
1	B	63	LEU	4.8
1	B	50	SER	4.8
1	B	62	ASP	4.7
1	B	79	PHE	4.6
1	B	53	GLN	4.6
1	B	28	LYS	4.6
1	B	71	ILE	4.4
1	B	61	LEU	4.4

Continued on next page...

Continued from previous page...

Mol	Chain	Res	Type	RSRZ
1	A	309	THR	4.3
1	A	308	PRO	4.3
1	B	91	VAL	4.3
1	B	64	SER	4.2
1	B	31	GLY	4.1
1	B	30	ASN	4.0
1	B	57	ASN	4.0
1	B	43	SER	3.9
1	B	66	ASN	3.8
1	A	56	TRP	3.8
1	B	54	SER	3.8
1	A	33	ARG	3.8
1	B	81	LYS	3.8
1	B	37	GLU	3.8
1	A	325	PHE	3.8
1	B	26	GLU	3.7
1	A	58	VAL	3.6
1	A	324	PRO	3.6
1	B	55	ALA	3.6
1	B	33	ARG	3.6
1	A	27	ILE	3.5
1	A	24	ILE	3.5
1	A	31	GLY	3.4
1	B	45	LYS	3.3
1	A	39	VAL	3.3
1	B	59	LYS	3.3
1	B	44	LEU	3.2
1	B	49	ALA	3.0
1	B	141	GLY	2.9
1	B	52	ARG	2.9
1	B	48	LEU	2.9
1	B	69	SER	2.9
1	A	57	ASN	2.9
1	B	65	GLY	2.9
1	B	60	GLU	2.8
1	A	43	SER	2.8
1	A	34	TYR	2.8
1	A	321	LEU	2.8
1	B	113	TYR	2.8
1	B	84	LEU	2.8
1	B	46	GLN	2.7
1	B	90	ASN	2.6

Continued on next page...

Continued from previous page...

Mol	Chain	Res	Type	RSRZ
1	B	110	ASN	2.6
1	B	74	ALA	2.6
1	B	323	ALA	2.6
1	A	30	ASN	2.6
1	B	41	ASP	2.6
1	A	306	THR	2.5
1	A	81	LYS	2.4
1	A	140	ARG	2.4
1	B	85	LEU	2.4
1	A	102	SER	2.4
1	B	42	SER	2.4
1	B	103	THR	2.4
1	B	111	ASN	2.4
1	B	307	VAL	2.4
1	A	50	SER	2.4
1	B	86	ASN	2.3
1	B	77	ALA	2.3
1	A	307	VAL	2.3
1	B	227	PHE	2.3
1	B	82	LEU	2.3
1	B	70	GLN	2.3
1	B	308	PRO	2.3
1	A	191	ASP	2.3
1	A	32	ASN	2.3
1	B	32	ASN	2.3
1	B	93	TYR	2.3
1	A	28	LYS	2.2
1	A	142	GLN	2.2
1	B	89	SER	2.2
1	B	78	PRO	2.2
1	A	320	ASP	2.2
1	A	93	TYR	2.2
1	B	73	ALA	2.2
1	A	35	LYS	2.2
1	A	25	HIS	2.2
1	B	75	ASP	2.2
1	A	121	PRO	2.2
1	B	277	ARG	2.2
1	B	92	LEU	2.1
1	B	101	LEU	2.1
1	A	38	LYS	2.1
1	B	140	ARG	2.1

Continued on next page...

Continued from previous page...

Mol	Chain	Res	Type	RSRZ
1	A	42	SER	2.1
1	A	40	THR	2.1
1	A	44	LEU	2.0
1	A	55	ALA	2.0

6.2 Non-standard residues in protein, DNA, RNA chains [i](#)

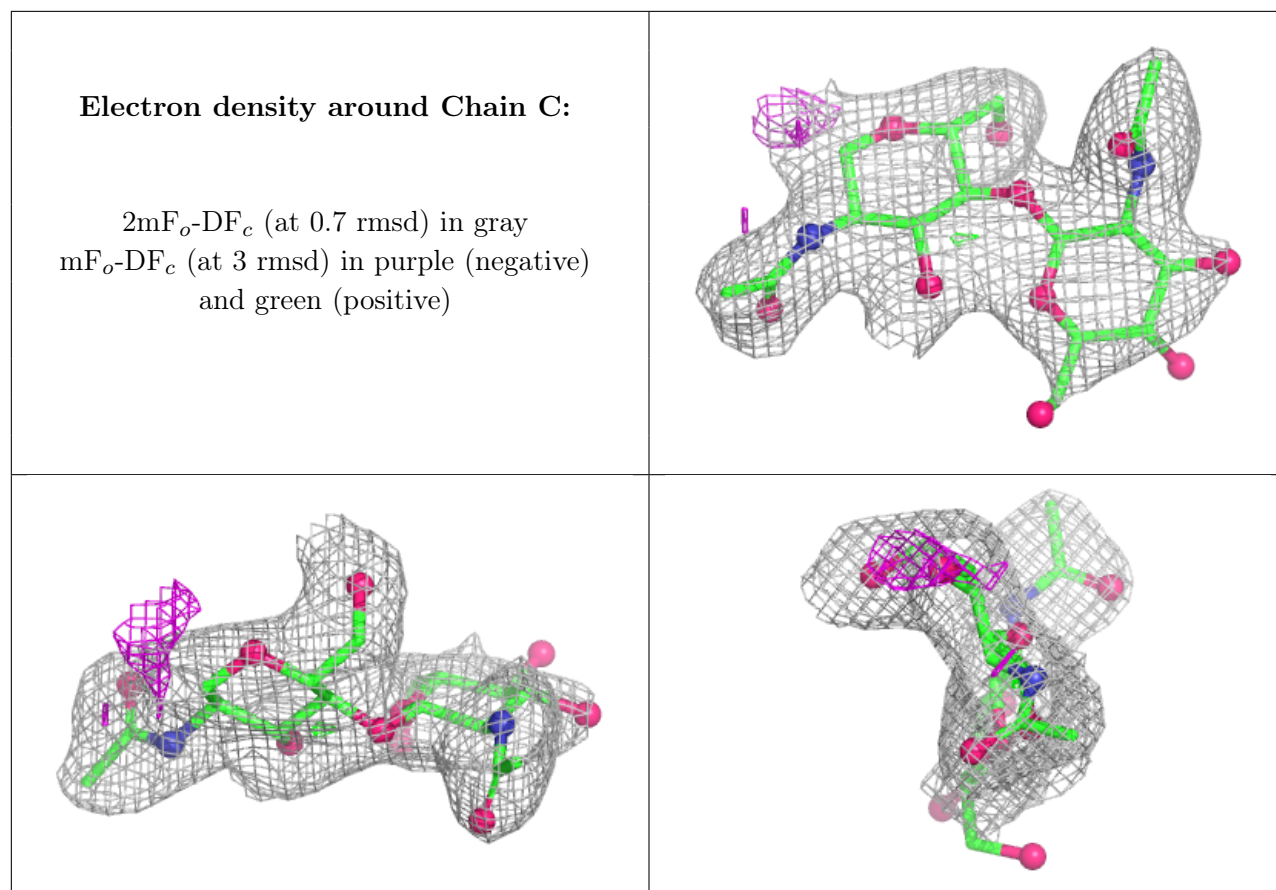
There are no non-standard protein/DNA/RNA residues in this entry.

6.3 Carbohydrates [i](#)

In the following table, the Atoms column lists the number of modelled atoms in the group and the number defined in the chemical component dictionary. The B-factors column lists the minimum, median, 95th percentile and maximum values of B factors of atoms in the group. The column labelled 'Q< 0.9' lists the number of atoms with occupancy less than 0.9.

Mol	Type	Chain	Res	Atoms	RSCC	RSR	B-factors(\AA^2)	Q<0.9
2	NAG	C	2	14/15	0.82	0.13	51,70,96,102	0
2	NAG	C	1	14/15	0.90	0.10	34,46,54,62	0

The following is a graphical depiction of the model fit to experimental electron density for oligosaccharide. Each fit is shown from different orientation to approximate a three-dimensional view.



6.4 Ligands [i](#)

In the following table, the Atoms column lists the number of modelled atoms in the group and the number defined in the chemical component dictionary. The B-factors column lists the minimum, median, 95th percentile and maximum values of B factors of atoms in the group. The column labelled 'Q<0.9' lists the number of atoms with occupancy less than 0.9.

Mol	Type	Chain	Res	Atoms	RSCC	RSR	B-factors(Å ²)	Q<0.9
4	NAG	B	1005	14/15	0.80	0.13	48,65,76,76	0
4	NAG	B	1004	14/15	0.84	0.19	43,57,74,80	0
3	CO	A	1	1/1	0.99	0.06	25,25,25,25	0
3	CO	A	2	1/1	0.99	0.06	26,26,26,26	0

6.5 Other polymers [i](#)

There are no such residues in this entry.